

More Trains, More Services

Mascot Precinct Update

October 2022



Work is progressing in Mascot

Transport for NSW is continuing construction within the Mascot precinct of the Mascot Station Upgrade and the Mascot Power Supply Upgrade as part of the More Trains, More Services program.

In September, the Mascot Power Supply Upgrade team restored and reopened the eastern roadway and footpath on Bourke Street (between Coward and John streets). We thank the community for their patience during this work. This completes the work to restore Bourke Street in this area.

At the substation site at 166 O’Riordan Street, we reached a major milestone with the delivery and installation of a cable bridge which connects the north and south building. The team has also completed major construction work of the south building, with the next stage focusing on the electrical fit out, in addition to the construction of the north building.

The Station Upgrade team successfully commissioned and opened 16 ticket gates, doubling the number of useable gates. The gates have been positioned to ensure smooth passenger flow for the existing entrance and the new western entry when it opens early next year. Work has continued in the

concourse area, by closing up the ceilings, replacing tiles and reinstalling wall cladding.

The team also completed the reinforced concrete slab for the upper concourse. This involved the installation of approximately 22-tonnes of reinforced steel and formwork, followed by pumping 106 cubic meters of structural concrete, seven meters down into the shaft. The slab was then cured before excavation works commenced underneath the slab down into the basement area.

What’s planned during October?

Planned construction activities for the **Mascot Power Supply Upgrade** include:

- Permanent line marking on Bourke Street between Coward and John streets.
- Continuing to build and fit out the substation at 166 O’Riordan Street, including electrical services in the south building, installation of the roof on the cable bridge and construction of the north building.
- Ongoing work for the footings and installation of the architecturally designed sculptural fence surrounding the substation.
- Continuing to utilise the site compound at 200 O’Riordan Street for deliveries and storage of materials and equipment.

Mascot Station Upgrade

During October the Mascot Station Upgrade team will complete the next phase of excavation extending a further 3-metres under the upper concourse floor. This will be followed by installation of the next layer of temporary propping steel, followed by excavation down to the final level in the basement. Other work will include:

- Structural steel installation
- Concrete works within the new western entry
- Excavation works
- Scaffolding works
- Alteration to the existing temporary ventilation
- Minor road works
- Installation of tiles, cladding, ceilings, services and CCTV within the station.

As we continue excavation of the new western station entry there may be some noise, dust and vibration impacts associated with these works. We will take every possible step to minimise impacts including noise and vibration monitoring and dust suppression. Ongoing through to November, excavation activities will occur below the water table which will expose acid sulphate soils. These soils oxidize on the presence of air and create sulphur dioxide, which can produce an odour which may be noticeable. While it may be unpleasant, it is not toxic or harmful. To help mitigate any impacts the project team will ensure air ventilation systems with scrubbers will be in place on site and as required, scent cannons will be used to freshen the surrounding air.

When will work take place?

Standard construction hours for both projects within the Mascot Precinct are 7am to 6pm Monday to Friday and 8am to 1pm on Saturdays.

Progress photos – Mascot Station Access Upgrade



Installed reinforcement on upper concourse.



New gate line arrangement.

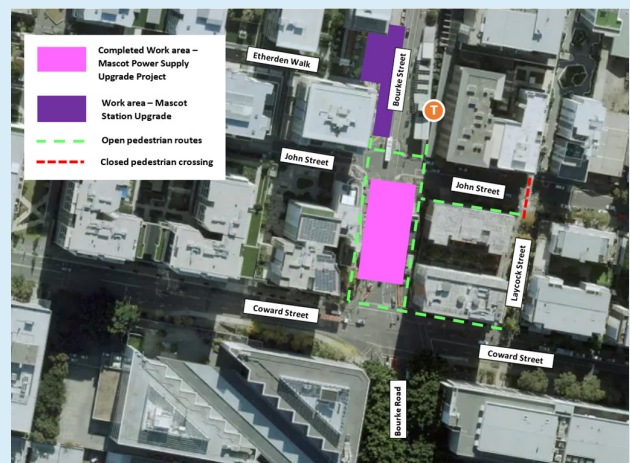
Pedestrian changes in the Mascot Precinct

To support the restoration and reopening of Bourke Street between Coward and John streets, there have been a number of changes to pedestrian routes in the Mascot Precinct.

Important pedestrian route changes:

- The temporary pedestrian crossing on John Street near the Laycock Street intersection has been removed.
- To replace the John Street temporary pedestrian crossing, a signalised pedestrian crossing on the corner of John and Bourke streets is now operational.

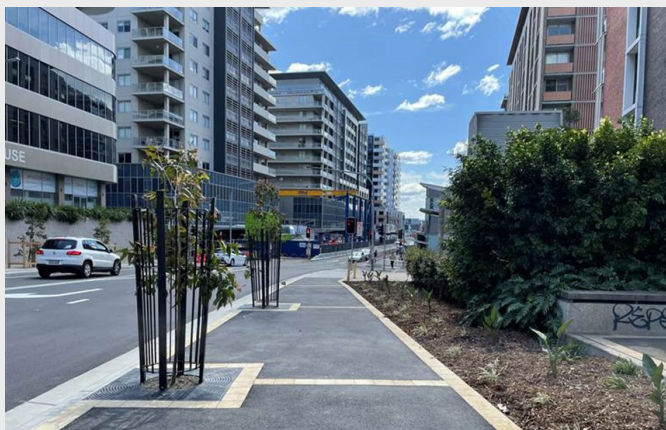
Please note the cycle lane on Bourke Street between Coward Street and Gardeners Road remains closed until the completion of the Mascot Station Upgrade project in early 2023.



Map of pedestrian changes.

Progress photos – Mascot Power Supply Upgrade

During September the Mascot Power Supply Upgrade project team restored and reopened the roadway and footpath on Bourke Street (between Coward and John streets). We have captured some of the work progress below. Also included are some of the photos of progress on the substation.



Bourke Street completed and reopened.

Extended Saturday hours

As we advised in the July and August Mascot Precinct Update notification, work on the Mascot Station Access upgrade had been adversely affected by the impacts of COVID on the workforce over the last 18 months, together with the extreme rain events that we have encountered. To make up lost time and the impact on our construction program we are extending Saturday hours to 6pm. This change took effect from Saturday 23 July 2022 and will remain in place through to project completion.



Mascot substation fitout -work in progress.



Mascot substation cable bridge -work in progress.



Mascot substation -work in progress.

Upcoming out of hours work

Mascot Power Supply Upgrade

Bourke Street between Coward and John streets

- Between 8pm Tuesday 4 October – 5am Wednesday 5 October, we will complete permanent line marking on Bourke Street between Coward and John streets to finalise and handover the new roadway in this location. There may be short delays on Bourke Street between John and Coward streets and at the intersection of Bourke and Coward streets. Traffic controllers will be in place to maintain two-way traffic under a stop/slow configuration.

If the work cannot be completed on this day due to factors outside of our control, the project team will return to carry out the work between 8pm Thursday 6 October and 5am Friday 7 October.

Substation site at 166 O’Riordan Street and site compound at 200 O’Riordan Street

- Between 8pm Wednesday 5 October and 5am Thursday 6 October and between 8pm Thursday 6 October and 5am Friday 7 October, the sites at 166 and 200 O’Riordan Street will be used for deliveries, storage of materials and equipment, prestart work meetings and worker parking.
- In order to carry out the fit out of the substation and cable tunnel at 166 O’Riordan Street, the project team have requested an extension of the out of hours application allowing them to work from 7am to 6pm

each Saturday until December 2022. These out of hours works will be carried out primarily within the substation structure and a minimal amount of machinery will be in operation during this period. Our site compound at 200 O’Riordan Street will be used to transport equipment and materials. These works are not expected to be noisy.

Mascot Station Access Upgrade

Throughout October, there will be out of hours deliveries and collections of equipment and plant for the excavation work. Specific times and dates for other these activities will be notified for in advance.

On occasion during October there will be out of hours concourse works involving the demolition and replacement of concourse floor tiles. These works will be undertaken inside the station but you may notice staff and vehicles above ground. Any impacted residents will be contacted beforehand.

The team will also be undertaking routine maintenance on Wednesday 5 October of the gantry crane during the evenings after the site is closed. This is scheduled to occur from 6pm to 10pm. Impacted residents will be contacted individually.

Completion of all work is dependent on a number of factors including weather and site conditions and is subject to change.

If you would like a member of the team to contact you to answer any questions, please email your details to projects@transport.nsw.gov.au with Mascot Precinct Works in the heading or call 1800 684 490 and leave your contact details.

Shop local at Mascot



Transport for NSW encourages you to support local businesses. The following cafes and restaurants are open and accessible via the footpath along Bourke Street.

Taisho Japanese Restaurant

Shop 6/8 Bourke St, Mascot (02) 8668 4961

Teaser

Shop 10/8 Bourke St, Mascot 0468 998 802

Coffee Club

Shop 4/8 Bourke St, Mascot (02) 8959 4172

Domino’s

Shop 9/8 Bourke St, Mascot (02) 8339 3420

Mr Lei

Shop 7/8 Bourke St, Mascot (02) 8339 4744

Mr Nam

Shop 1/8 Bourke St, Mascot (02) 8386 5748

Northeastern Family Chinese Restaurant

Shop 2/8 Bourke St, Mascot (02) 8060 6815

Spice Thai Cuisine

Shop 3/8 Bourke St, Mascot (02) 8339 4838

Looking for delivery options?

Restaurants and cafes along Bourke Street, Mascot are affiliated with Deliveroo, Doordash, Eatapp.online, Hey You, Menulog and UberEats.



Contact us

For more information or to subscribe for project updates:

-  Project information line: **1800 684 490**
-  **24/7** construction response line: **1800 775 465**
-  projects@transport.nsw.gov.au
-  www.transport.nsw.gov.au/mtms
-  If you need an interpreter, contact TIS National on **131 450** and ask them to call **1800 684 490**