

Mona Vale Road East Upgrade

Construction Update | May 2023

Manor Road to Foley Street

We will be working out of hours on Mona Vale Road between Manor Road and Foley Street from **8pm to 6am Monday 1 May to Friday 3 June 2023**, weather permitting.

Please note, in line with our environmental license, **we will not work more than two consecutive nights and no more than three nights each week.**

Our work will include:

- road maintenance, gate adjustments, barrier movements, line marking, and plant delivery/pick up along the project alignment
- Mona Vale Road full road closure for the lifting of the bridge girders for the fauna overpass
- Mona Vale Road lane closures for construction of fauna overpass (deck pour, fauna fence installation)
- asphalt, kerbing, services, and median works between Daydream Street and east of Foley Street
- asphalt work in Samuel Street

- traffic realignment, drainage, and kerb work on Mona Vale Road near Manor Road
- overhead power connection works at the Western Early Work site inclusive of Tumburra Street (see map overleaf)
- stormwater drainage installation at Ponderosa Parade and Mona Vale Road.

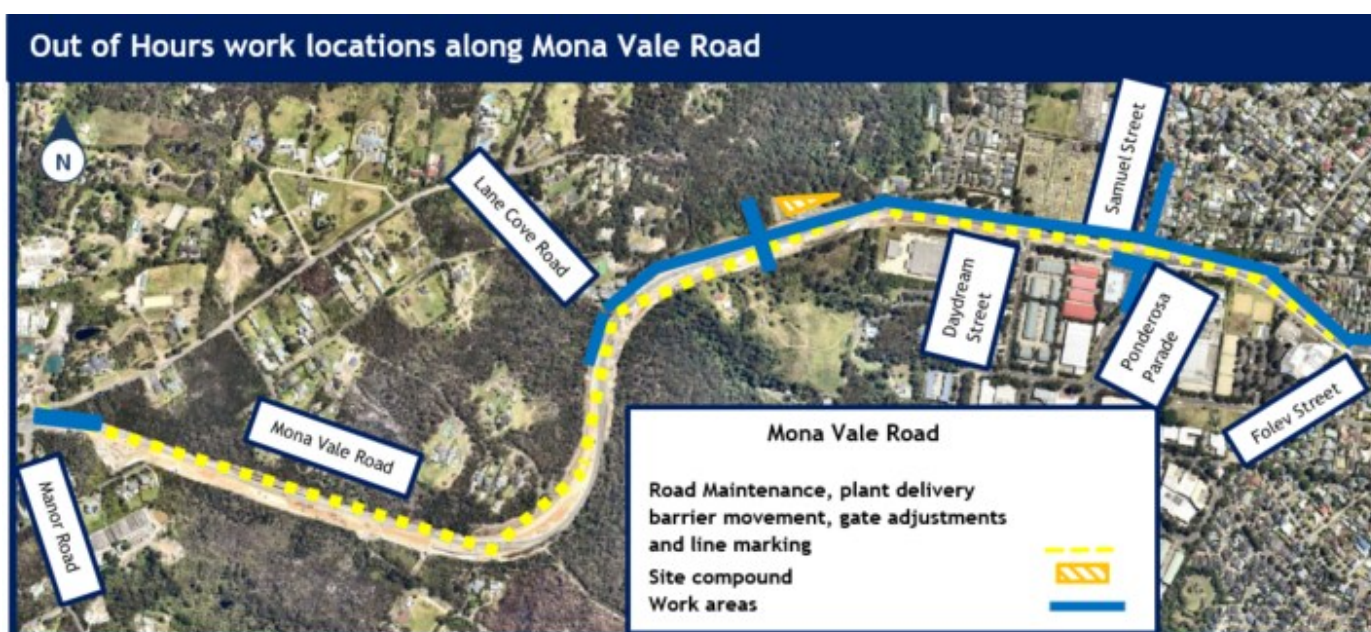
How will our work affect you?

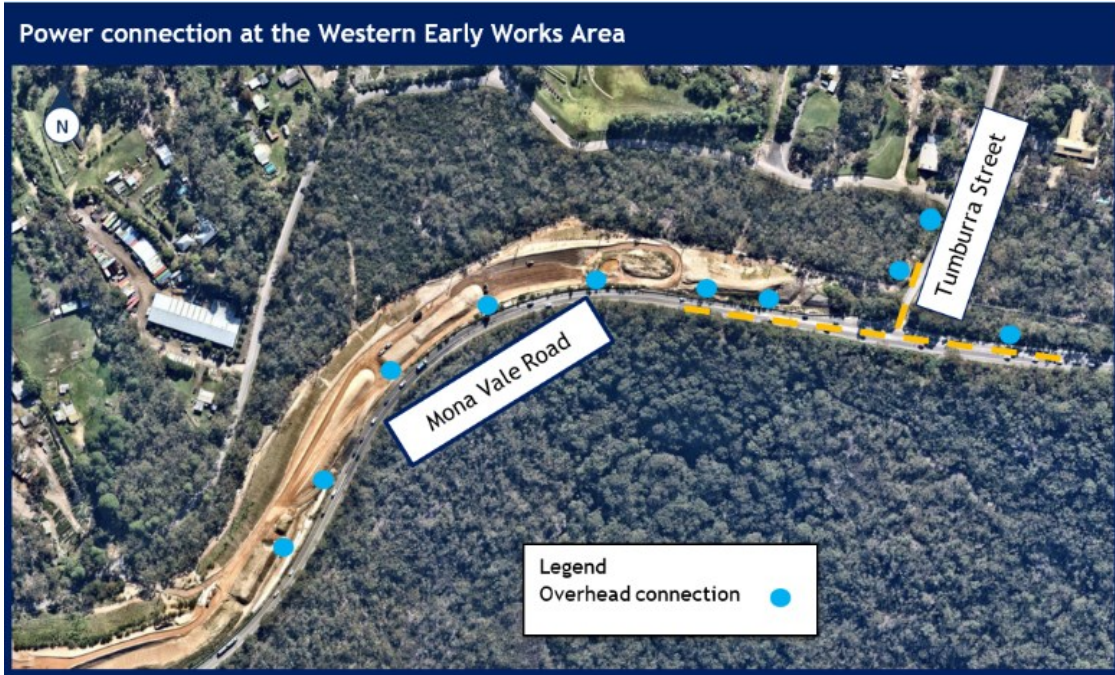
During this out of hours work, machinery and equipment used may include tipper trucks, large trucks, backhoes, elevated work platforms, light vehicles, lighting towers, saw cutting machines, franna, line markers, excavators, and paving machines. This work will be noisy.

We will direct any lighting away from residential properties and turn off machinery when not in use.

The project team will contact directly impacted residents eligible for respite in advance of the works.

If our work is delayed, we will notify you in advance of the new dates.





Traffic changes

To minimise traffic disruptions and reduce safety risks to the workers and motorists, we need to carry out our work at night.

There will be a closure on Mona Vale Road during the lifting of the girders, (a separate notification will be sent out in advance of this closure).

There will be temporary traffic changes to ensure the work zone is safe for workers and road users.

This work will be weather dependent and if it does not occur on these nights, we will look to undertake the work the following week.

Please keep to speed limits and follow signs and traffic controllers' directions.

For the latest traffic updates, call **132 701**, visit livetraffic.com or download the **Live Traffic NSW App**.

Mona Vale Road West

We will be working at the Western Early Work site located off Tumburra Street, Ingleside over the next few months.

Drone

A drone will be used each month to take progress photos and assist with survey work within the project area.

Contact us

If you have any questions or would like more information, please contact our project team:

1800 413 640

monavaleroad@georgiou.com.au

nswroads.work/mvrest



Translating and interpreting service

If you need help understanding this information, please contact the Translating and interpreting Service on **131 450** and ask them to call us on **1800 413 640**