

Regional Rail

Mindyarra Maintenance Centre

Transport for NSW is replacing the existing NSW regional rail fleet of XPT, XPLOER and Endeavour trains. This fleet provides services for customers who travel from a number of NSW regional centres to Sydney, as well as Canberra, Melbourne and Brisbane.

To support the new fleet, a purpose-built maintenance centre is being constructed in Dubbo. Momentum Trains is delivering the Regional Rail Project on behalf of Transport for NSW.

Upcoming out of hours work – Saturday 18 February to Monday 20 February 2023

Construction work continues at **Mindyarra Maintenance Centre**, located off **Wingewarra Street**, during standard construction hours. Standard construction hours for the project are from 7am to 6pm Monday to Friday, and 8am to 1pm Saturday.

To minimise disruption to the rail network and ensure the safety of workers and the community, some work will also be carried out within the rail corridor outside of these times during scheduled Sydney Trains trackwork.

We will be working from **8am Saturday 18 February to 7am Monday 20 February 2023**, weather permitting, to carry out signalling and drainage work, as well as earthworks and excavations.

Train services may be affected. Please contact Transport Info on **131 500** or visit <https://transportnsw.info/> for more information.

What you may notice

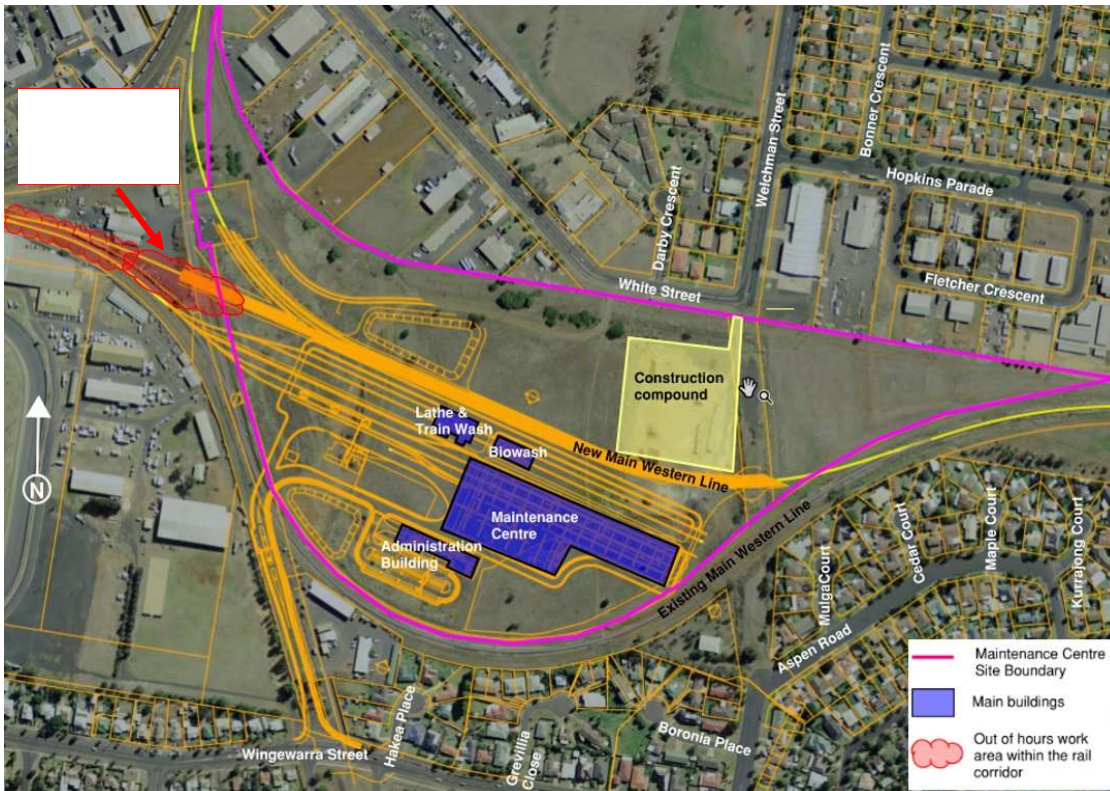
Equipment to be used during out of hours work includes, but is not limited to:

- hand tools
- heavy and light vehicles
- concrete pump
- shotcrete generator
- vacuum trucks
- skid steer loader
- excavators
- vibratory plate
- trucks and trailers
- water carts
- lighting towers
- dump truck

The work may be noisy at times, however we will take steps to reduce noise and impacts, such as using non-tonal reversing beepers, directing lighting away from residences, instructing workers to keep noise to a minimum and completing noisier works prior to midnight.

Transport for NSW is committed to minimising disruption to the community. We apologise for any disruption these activities may cause.

Map of work area



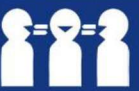
More information

Working closely and effectively with the local community is a priority for Transport for NSW and Momentum Trains.

We will keep you up to date about upcoming work, with regular notifications and updates on our website.

If you have questions or concerns, or would like more information about the Regional Rail Project, please contact **1800 684 490**, email projects@transport.nsw.gov.au or visit transport.nsw.gov.au/projects/current-projects/regional-rail.

For urgent enquiries or complaints about our construction activities, please contact our 24-hour construction response line on 1800 775 465.



This document contains information about public transport projects in your area. If you require the services of an interpreter, please contact the Translating and Interpreting Service on **131 450** and ask them to call the Transport Projects Division on **(02) 9200 0200**. The interpreter will then assist you with translation.

For more information call **1800 684 490**,
Email projects@transport.nsw.gov.au
visit transport.nsw.gov.au/projects/current-projects/regional-rail
For urgent enquiries or complaints regarding construction, please call 24 hours **1800 775 465**