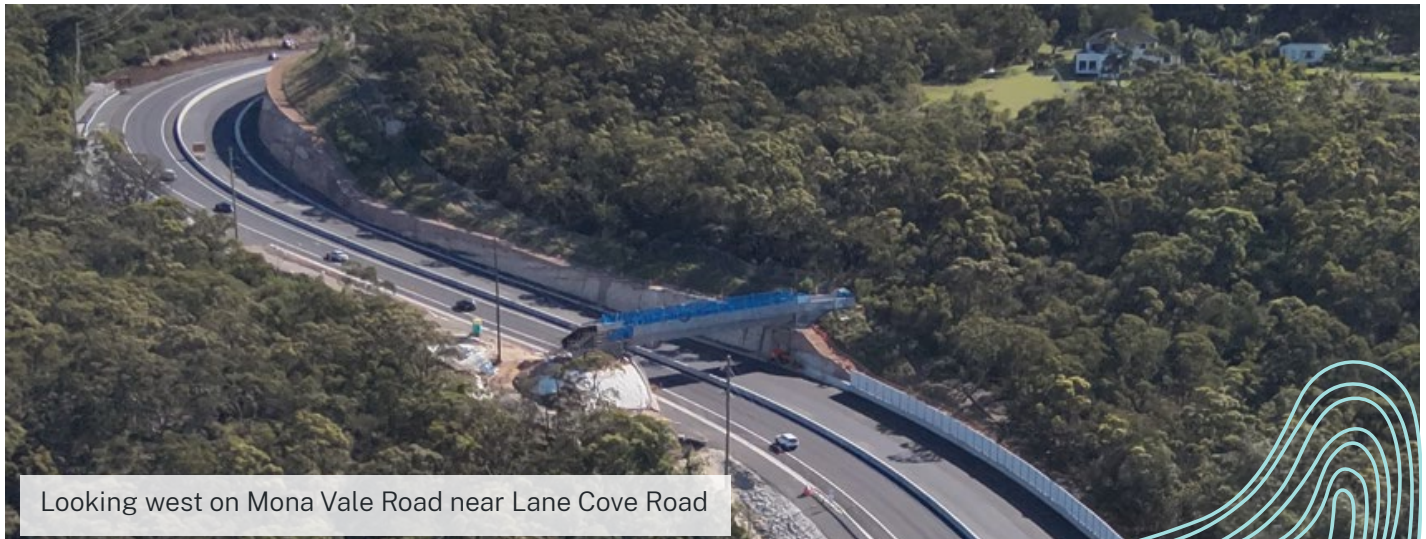


Mona Vale Road East upgrade

Community Update

December 2023



Looking west on Mona Vale Road near Lane Cove Road

The NSW Government is upgrading Mona Vale Road between Manor Road, Ingleside and Foley Street, Mona Vale, from two lanes to four lanes to ease congestion, reduce travel times and improve safety.

All lanes temporarily available for the holidays

All four lanes will be temporarily available on Mona Vale Road from Manor Road in Ingleside to Foley Street in Mona Vale over the holiday period.

The lanes will be available from **3pm Thursday 21 December 2023 to 6pm Sunday 7 January 2024**. The speed limit will remain at 60km/hr, and trucks and buses must use low gear.

Changes to the road corridor include:

- double the capacity of lanes from Manor Road to Foley Street
- a signalised intersection at Ponderosa Parade, Samuel Street and Mona Vale Road
- widening of the intersection at Foley Street and Mona Vale Road
- a 'first-of-its-kind' fauna bridge in Greater Sydney and Northern Beaches dedicated to wildlife.

End of year holiday closedown

As with most projects, work will stop for two weeks from **Friday 22 December to Monday 8 January 2024**.

The site will be regularly monitored over this period.

We wish you and your loved ones a safe and happy holiday season.



Looking east on Mona Vale Road over the newly built Ponderosa Parade and Samuel Street signalised intersection.

What you will see in 2024

While all lanes will be available from 3pm Thursday 21 December to 6pm Sunday 7 January 2024, there are still some minor works to be complete in early 2024.

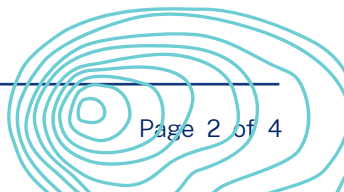
To allow for this work to be done safely and quickly, lane closures will be reinstated along Mona Vale Road.

This will avoid the need for multiple lane changes and minimize disruption to traffic flows and also ensure a safe separation between the traffic and work areas.

These works include:

- completing the final asphalt layer at and near the intersections
- fauna ramp construction, landscaping and installing screens on the fauna bridge
- installing a permanent VMS board
- remaining signposting, fencing, and landscaping works.

We will continue to update the community and road users of traffic changes with work notifications, variable messaging signs, static signs and traffic management.



Fauna Bridge

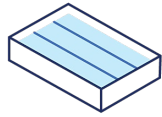
Greater Sydney's first land bridge dedicated to native wildlife



219,156m³

of rock cut

=



88

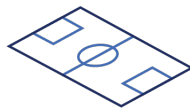
Olympic size swimming pools



19,000m³

of asphalt

=



19km

over 200 football fields

Fauna Bridge update

Greater Sydney's 'first-of-its-kind' fauna bridge will provide a safe crossing for native animals living along and near Mona Vale Road.

The fauna bridge was lifted in place in August 2023. Over the past few months, we have been finishing the main deck, side barriers and installed posts for the new bridge screen.

In early 2024, we will extend the current ramp down into the Northern Beaches Biodiversity Conservation Trust Land and complete the fauna crossing with landscaping on and around the bridge.

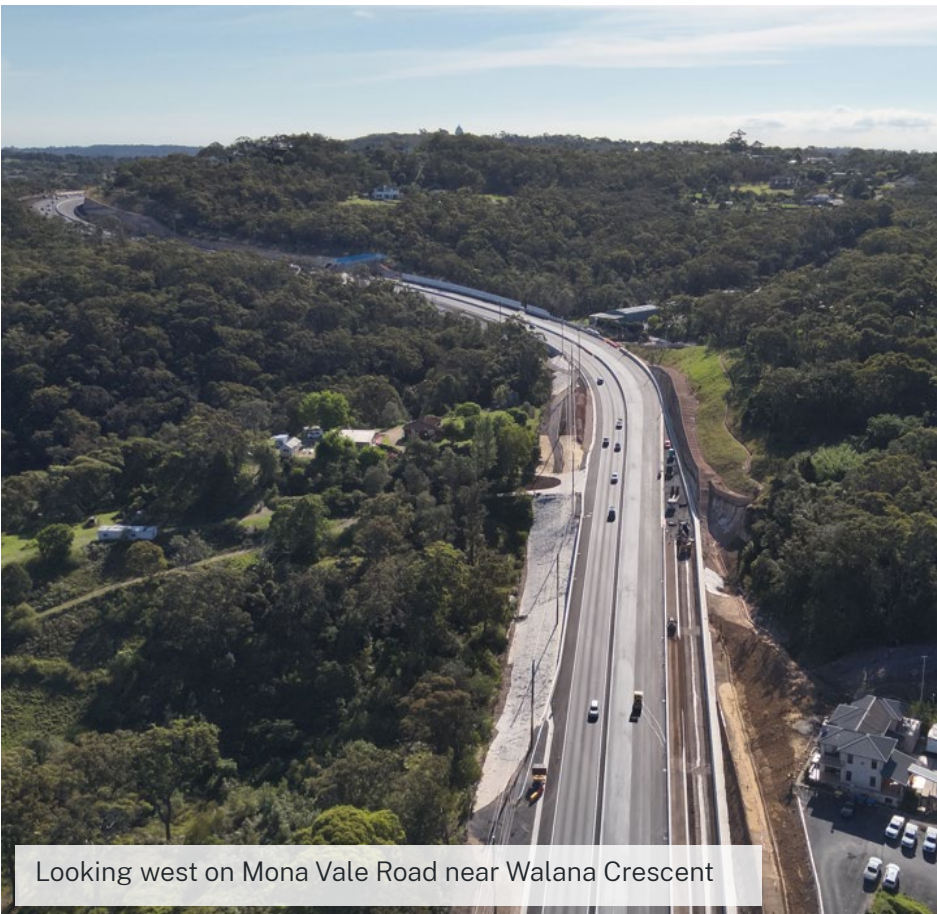
Ingleside work area (west of Tumburra Street)

As part of our works, we have also been constructing a new road formation along the northern side of Mona Vale Road next to Tumburra Street at Ingleside.

Once the earthworks are complete, the area will be bitumen sealed and vegetation planted to minimise soil erosion. These early works will form part of the next stage of the Mona Vale Road upgrade.



The Fauna Bridge, looking east on Mona Vale Road near Lane Cove



Looking west on Mona Vale Road near Walana Crescent



Thank you

We would like to thank our local and wider communities for their support and patience during the construction of these works.

We welcome your feedback and local knowledge.

Please contact us at monavaleroad@transport.nsw.gov.au.

Change to parking –Foley Street to Bungan Street (eastbound)

The opening of four lanes along Mona Vale Road between Ponderosa Parade and Foley Street at Mona Vale has raised a safety concern where parked cars on the eastbound kerb side lane force traffic to merge.

Following community feedback, we will be implementing daytime parking restrictions in this location **from Thursday 21 December**. There will be **no parking from 6am to 7pm Monday to Sunday**.

This change removes the need to merge from two lanes into one, east of Foley Street. This is consistent with the rest of Mona Vale Road and ensures a safer outcome for motorists.

Contact us



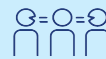
Project Infoline **1800 413 640**



monavaleroad@transport.nsw.gov.au



For the latest traffic updates:
Call 132 701, visit livetraffic.com or
download the app Live Traffic NSW



Interpreter service

For languages other than English call **131 450**
Arabic • Greek • Hindi • Mandarin • Vietnamese

طلب خدمة الترجمة الشفهية للغات غير الإنجليزية اتصل
بالرقم **131 450**

Για υπηρεσίες διερμηνείας σε άλλες γλώσσες εκτός από
τα Αγγλικά καλέστε το **131 450**

अंग्रेज़ी के अतिरिक्त अन्य भाषाओं के लिए दुभाषिया सेवा
131 450 पर कॉल करें

获取英语以外的其他语言口译协助服务可以致电**131 450**

Để có dịch vụ thông ngôn cho các ngôn ngữ khác
tiếng Anh, gọi số **131 450**