

# Mona Vale Road East Upgrade Project

## Out of hours work notification

Transport for NSW | June – July 2022

### Manor Road to Foley Street

We will be working out of hours work on Mona Vale Road between Manor Road and Foley Street from **8pm to 6am Monday 20 June to Friday 1 July 2022**, weather permitting.

If our work is delayed, we will notify you in advance of the new dates.

Our work will include:

- road maintenance
- barrier movements
- line marking
- plant delivery/pick up
- milling, asphalt and concrete work Foley Street
- trench road crossing across Mona Vale Road east of Foley Street



## How will our work affect you?

During our night work we may use machinery and equipment such as tipper trucks, large trucks, backhoe, elevated work platforms, light vehicles, lighting towers, saw cutting machines, franna, line markers, excavator, and paving machine. This work will be noisy.

If you are eligible for alternative accommodation, we will contact you at least 36 hours prior to the works.

## Traffic changes

To minimise traffic disruptions and reduce safety risks to the workers and motorists, we need to carry out our work at night.

There will be temporary traffic changes to ensure the work zone is safe for workers and road users.

**There will be a full road closure on Ponderosa Parade for two nights on 20 and 21 June 2022 from 8pm to 6am**

**There will also be a full road closure on Foley Street on the nights of 27, 28 and 30 June 2022 from 8pm to 6am**

Detours will be in place throughout the closures (see **maps**).

This work will be weather dependent and if it does not occur on these nights we will look to undertake this the following week.

Please keep to speed limits and follow signs and traffic controllers' directions.

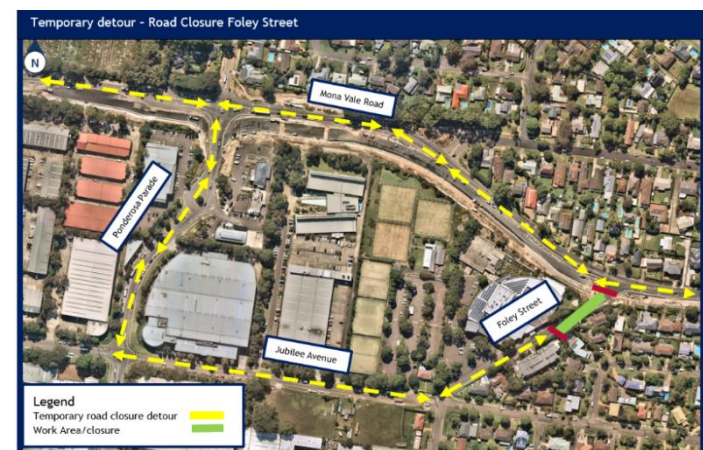
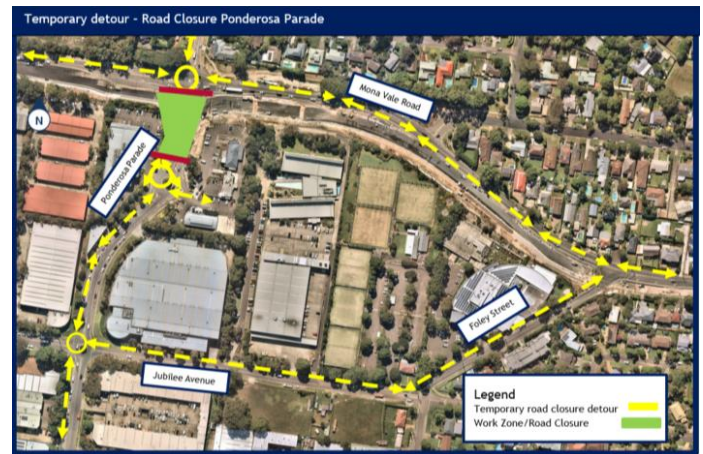
For the latest traffic updates, call 132 701, visit [livetraffic.com](http://livetraffic.com) or download the Live Traffic NSW App.

## Mona Vale Road West

We will not be working at the Western Early Work site off Tumburra Street, Ingleside during this time.

## Drone

A drone will be used each month to take progress photos and assist with survey work within the project area



## Contact us

If you have any questions or would like more information on the Mona Vale Road East Upgrade project, please contact our project team:



1800 413 640



[monavaleroad@georgiou.com.au](mailto:monavaleroad@georgiou.com.au)



[nswroads.work/mvreast](https://nswroads.work/mvreast)



If you need help understanding this information, please contact the Translating and Interpreting Service on **131 450** and ask them to call us on **1800 413 640**.