

# Mona Vale Road East Upgrade

Out of hours work notification

Transport for NSW | October 2022

## Manor Road to Foley Street

We will be working out of hours on Mona Vale Road between Manor Road and Foley Street from **8pm to 6am Monday 24 October to Friday 4 November 2022**, weather permitting.

Please note, in line with our environmental license, **we will not work more than two nights consecutively, no more than three nights each week.**

Our work will include:

- road maintenance, gate adjustments, barrier movements, line marking, and plant delivery/pick up along the project alignment
- pole installation at the western early works area (see map)
- service installation at Manor Road.

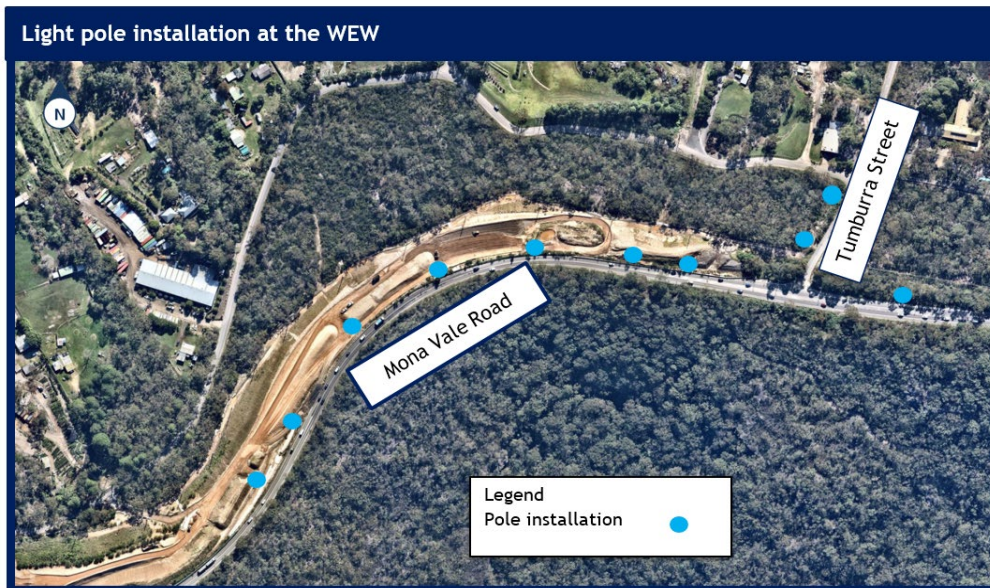
## How will our work affect you?

During our night work we may use machinery and equipment such as tipper trucks, large trucks, backhoes, elevated work platforms, light vehicles, lighting towers, saw cutting machines, franna, line markers, excavators, and paving machines. This work will be noisy. We will direct any lighting away from residential properties and turn off machinery when not in use.

If you are eligible for alternative accommodation, we will contact you at least 36 hours prior to the works.

If our work is delayed, we will notify you in advance of the new dates.





## Traffic changes

To minimise traffic disruptions and reduce safety risks to the workers and motorists, we need to carry out our work at night.

There will be temporary traffic changes to ensure the work zone is safe for workers and road users.

This work will be weather dependent and if it does not occur on these nights, we will look to undertake this the following week.

Please keep to speed limits and follow signs and traffic controllers' directions.

For the latest traffic updates, call 132 701, visit [livetraffic.com](http://livetraffic.com) or download the Live Traffic NSW App.

## Mona Vale Road West

We will be working at the Western Early Work site off Tumburra Street, Ingleside over the next few months.

## Drone

A drone will be used each month to take progress photos and assist with survey work within the project area.

## Contact us

If you have any questions or would like more information, please contact our project team:

**1800 413 640**

**[monavaleroad@georgiou.com.au](mailto:monavaleroad@georgiou.com.au)**

**[nswroads.work/mvrest](https://nswroads.work/mvrest)**



## Translating and interpreting service

If you need help understanding this information, please contact the Translating and Interpreting Service on **131 450** and ask them to call us on **1800 413 640**

October 2022

Privacy: Transport for NSW (TfNSW) is subject to the Privacy and Personal Information Protection Act 1998 ("PPIP Act") which requires that we comply with the Information Privacy Principles set out in the PPIP Act. All information in correspondence is collected for the sole purpose of assisting in the delivery of this project. The information received, including names and addresses of respondents, may be published in subsequent documents unless a clear indication is given in the correspondence that all or part of that information is not to be published. Otherwise, we will only disclose your personal information, without your consent, if authorised by the law. Your personal information will be held by us at 27 Argyle Street, Parramatta. You have the right to access and correct the information if you believe that it is incorrect.