

Mona Vale Road East Upgrade

Out of hours work notification

Transport for NSW | February 2023

Manor Road to Foley Street

We will be working out of hours on Mona Vale Road between Manor Road and Foley Street from **8pm to 6am Monday 6 February to Friday 3 March 2023**, weather permitting.

Please note, in line with our environmental license, **we will not work more than two nights consecutively and will work no more than three nights each week.**

Our work will include:

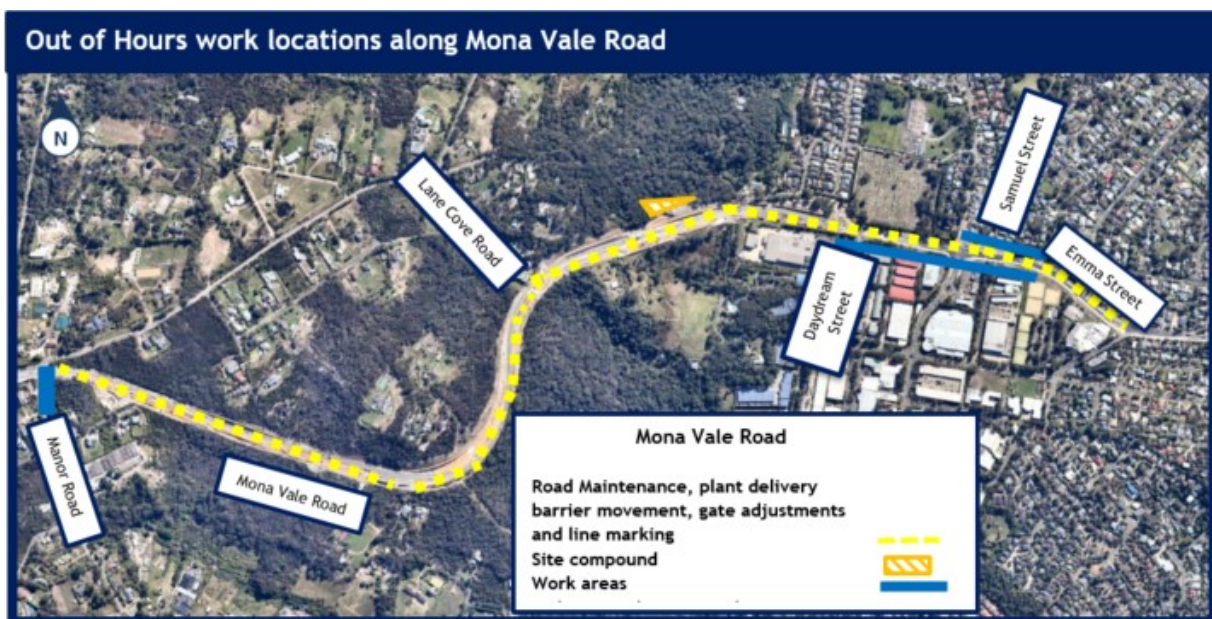
- road maintenance, gate adjustments, barrier movements, line marking, and plant delivery/pick up along the project alignment
- Sydney Water main cut over from Samuel Street to Emma Street and from Daydream Street to Emma Street
- service crossing at Manor Road
- installation of overhead services at the western early works area (inclusive of Tumburra Street) (see service installation map).

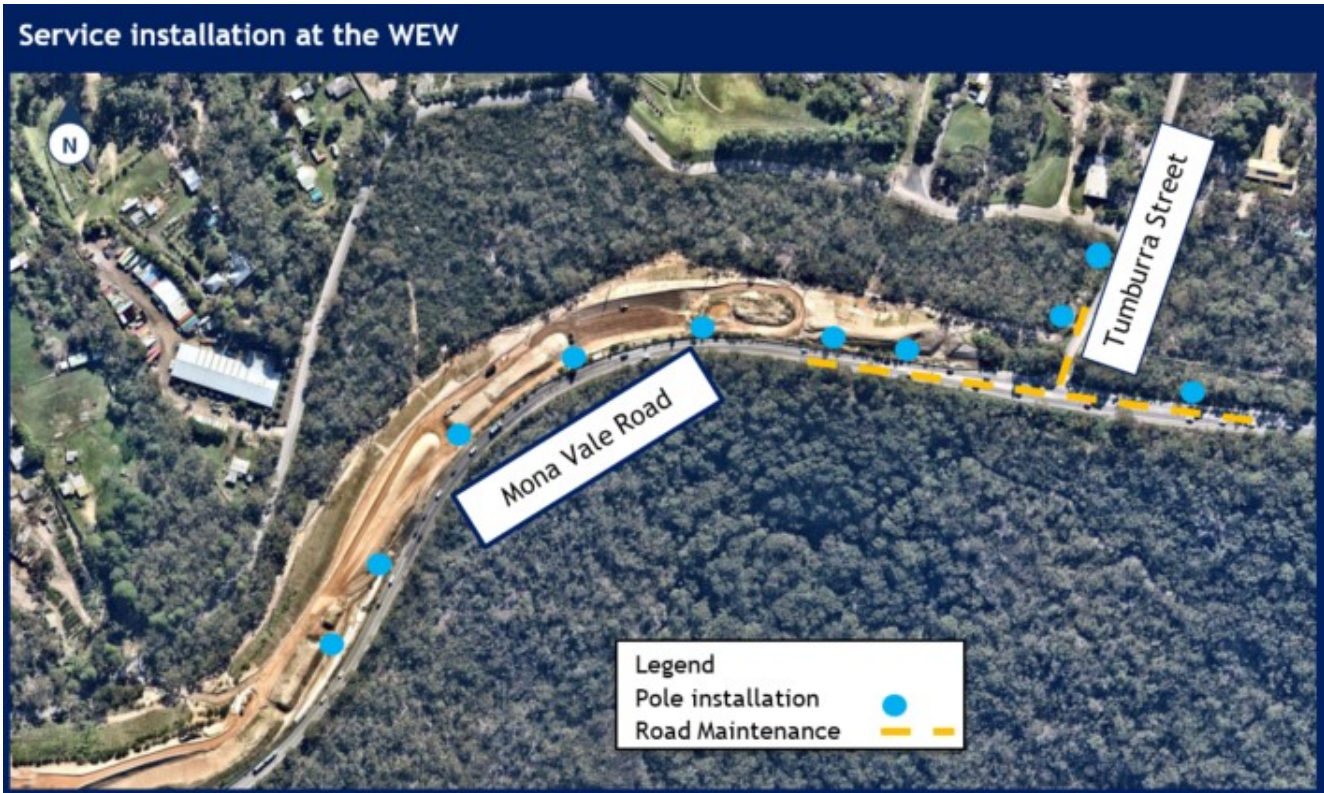
How will our work affect you?

During this night work machinery and equipment used may include tipper trucks, large trucks, backhoes, elevated work platforms, light vehicles, lighting towers, saw cutting machines, franna, line markers, excavators, and paving machines. This work will be noisy. We will direct any lighting away from residential properties and turn off machinery when not in use.

If you are eligible for alternative accommodation, we will contact you at least 36 hours prior to the works.

If our work is delayed, we will notify you in advance of the new dates.





Traffic changes

To minimise traffic disruptions and reduce safety risks to the workers and motorists, we need to carry out our work at night.

There will be temporary traffic changes to ensure the work zone is safe for workers and road users.

This work will be weather dependent and if it does not occur on these nights, we will look to undertake the work the following week.

Please keep to speed limits and follow signs and traffic controllers' directions.

For the latest traffic updates, call 132 701, visit livetraffic.com or download the Live Traffic NSW App.

Mona Vale Road West

We will be working at the Western Early Work (WEW) site off Tumbarra Street, Ingleside over the next few months.

Drone

A drone will be used each month to take progress photos and assist with survey work within the project area.

Contact us

If you have any questions or would like more information, please contact our project team:

1800 413 640

monavaleroad@georgiou.com.au

nswroads.work/mvreast



Translating and interpreting service

If you need help understanding this information, please contact the Translating and Interpreting Service on **131 450** and ask them to call us on **1800 413 640**