

Mona Vale Road East Upgrade Project

Out of hours work notification

March 2022

Manor Road to Foley Street

Out of hours work on Mona Vale Road between Manor Road and Foley Street will occur from **8pm to 6am** between **Monday 14 March to Friday 25 March 2022**, weather permitting. Our work includes road maintenance and plant delivery.

If work is delayed, we will try to work a different night.

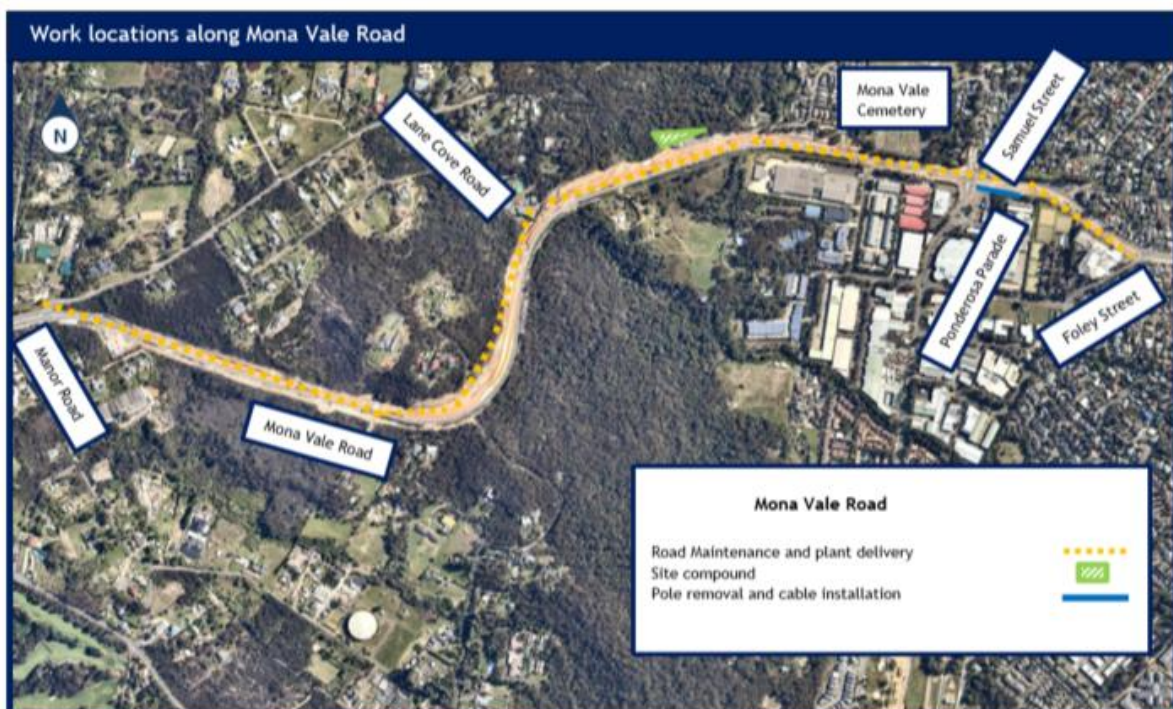
How our work will affect you?

We need to carry out our work at night to minimise traffic disruption and reduce safety risks to the workers and motorists.

During our night work we may use machinery and equipment such as: tipper trucks, large trucks, backhoe, elevated work platforms, light vehicles and lighting towers, saw cutting machine, franna, excavator and paving machine.

We will notify highly impacted residents if there is a change of date.

If you are eligible for alternative accommodation, we will contact you at least 36 hours prior to the work.



Mona Vale Road West

We will not be working at the Western Early Work site off Tumburra Street, Ingleside during this time.

Traffic changes

There will be temporary traffic changes to ensure the work zone is safe for workers and road users. These will be managed by traffic controllers.

Please keep to speed limits and follow signs and traffic controllers' directions.

For the latest traffic updates, you can call 132 701, visit livetraffic.com or download the Live Traffic NSW App.

Drone

A drone will be used each month to take progress photos and assist with survey work. The drone will stay within the project area.

COVID 19 Response and Recovery Order

To support industry and continue delivering critical infrastructure, the NSW Government introduced new rules last year allowing construction sites, including public infrastructure projects, to operate on weekends and public holidays.

The order has now been extended to 31 March 2022. We have been using these new rules for some time, particularly with our weekend road closure works and on Saturdays when we work from 7am until 6pm.

High impact noise activities such as rock breaking, rock hammering will stop at 1pm. All other activities will continue through to 6pm.

Contact us

If you have any questions or would like more on the Mona Vale Road East Upgrade project please contact our project team:



1800 413 640



monavaleroad@georgiou.com.au



nswroads.work/mvreast



If you need help understanding this information, please contact the Translating and Interpreting Service on 131 450 and ask them to call us on 1800 413 640.