

More Trains, More Services

Mortdale Maintenance Centre Upgrade



Image: a construction team member is dwarfed standing inside the 6-metre-deep excavated pit.

What's happening behind the walls of the Mortdale Maintenance Centre?

To contribute to an improved rail network and increase the maintenance efficiency at Mortdale Maintenance Centre, the facility is being upgraded to incorporate a *Bogie Exchange System*. This system involves the construction of underground structures which will facilitate the transfer of bogies (the framework which carries the wheelset attached to trains) between the maintenance areas within the building.

What happened last month?

We undertook the following construction activities in preparation for the bogie exchange chamber:

- excavated to a depth of 6 metres
- poured 70m³ of concrete
- excavated 3500m³ of material

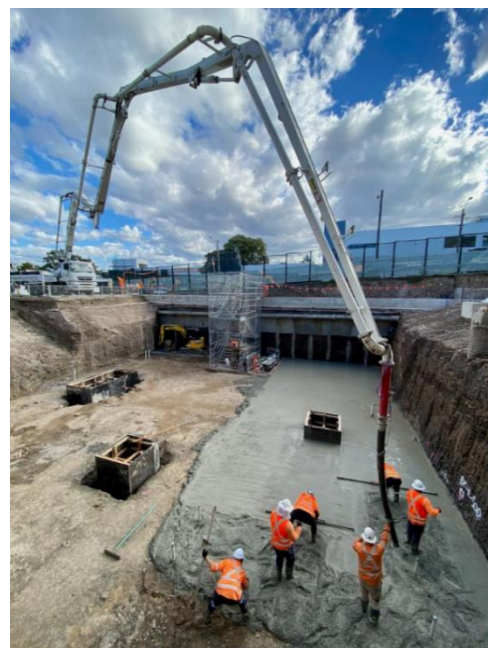


Image: construction taking place inside the Mortdale Maintenance Centre in May 2021.

What's next?

In June, all our activities will continue to be contained within the maintenance centre.

This work will include:

- concreting for the construction of the bogie chambers inside the excavation (as pictured on the front page)
- installation of cable trays (a bridging system used to support insulated electrical cables and wiring) from existing electrical infrastructure inside the maintenance building to a new substation facility for commissioning later this year.

This work is not expected to have any impact on the community outside of the maintenance centre.

Construction activities outside of the Mortdale Maintenance Centre

Thank you to the local community members who have contacted us in response to construction activities taking place outside the Mortdale Maintenance Centre on Hurstville Road.

These activities are not related to our activities as part of work on More Trains, More Services and we have forwarded all feedback to the relevant contractors undertaking this work.

We encourage you to contact us on **1800 684 490** with any questions or concerns around construction activities in the area. We will then do our best to assist in locating the most appropriate agency in response to your feedback.

How are we keeping our sites safe?

We are continuing to deliver projects across New South Wales while ensuring the safety of all staff and the community. In line with current Australian Government guidelines around slowing the spread of Coronavirus and social distancing, all work will be carried out at a safe physical distance where possible and necessary hygiene practices will be observed.

Standard construction hours

To support the construction industry through Coronavirus, the NSW Government have extended an amendment to the legislation regarding standard construction hours. This amendment enables activities across all our sites to be carried out between 7am and 6pm on weekdays, weekends and public holidays.

About More Trains, More Services

Over the next ten years the More Trains, More Services program will simplify and modernise the rail network so that customers can expect more frequent train services, with less wait times, less crowding and more seats on a simpler, more reliable network.

Contact us

For more information or to subscribe for project updates:

 **project information line: 1800 684 490**

 **24/7 construction response line: 1800 775 465**

 **projects@transport.nsw.gov.au**

 **www.transport.nsw.gov.au/mtms**

Translation



If you require the services of an interpreter, please contact the Translating and Interpreting Service on **131 450** and ask them to contact Transport for NSW on **1800 684 490**.

An interpreter will assist you with translation.