

More Trains, More Services

Mortdale Maintenance Centre



What's happening behind the walls of the maintenance centre?

We have been completing some major excavation activities inside the maintenance centre for two new underground structures that will facilitate the transfer of bogies (the framework which carries the wheelset attached to trains) between the maintenance centre buildings.

Throughout April we excavated to a depth of six metres and started structural concrete activities to stabilise the embankment of the underground chambers, as seen in the image below.



Recently we also completed construction of a 50 metre retaining wall which will enable the construction of a new access road onto Hurstville Road, as seen in the image below.



What's next?

In May we will continue working on the construction of the bogie tunnels, including installation of steel tracks, drainage, conduits and waterproofing work.

On Saturday 15 and Sunday 16 May, we will be working during a scheduled Sydney Trains track work period while services are not running.

Scheduling our work to coincide with Sydney Trains track work periods minimises disruptions to commuter services and improves the safety of our construction team.

During this time, we will be running cable trays (a bridging system used to support insulated electrical cables and wiring) from existing electrical infrastructure inside the maintenance building to a new substation facility for commissioning later this year.

This work is not expected to have any impact on the community outside of the maintenance centre.

For up to date information about services during these times, please visit transportnsw.info or call 131 500.

Changes to construction hours

To support the construction industry through Coronavirus, the NSW Government have extended an amendment to the legislation regarding standard construction hours. This amendment enables activities across all our sites to be carried out between **7am and 6pm on weekdays, weekends and public holidays.**

All our construction activities in May will be contained inside the maintenance centre and our activities are not expected to impact the local community.

For more information on this project, please visit yoursay.transport.nsw.gov.au/mtms-mortdale

About More Trains, More Services

Over the next ten years the More Trains, More Services program will simplify and modernise the rail network so that customers can expect more frequent train services, with less wait times, less crowding and more seats on a simpler, more reliable network.

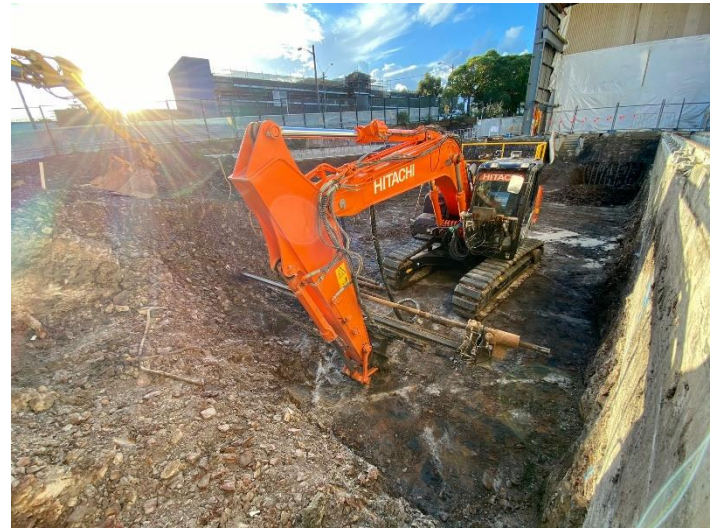


Image of a drilling rig installing soil nails (anchors drilled into the ground to support built infrastructure) as the sun rises over the Mortdale Maintenance Centre

Contact us

For more information or to subscribe for project updates:

 **project information line: 1800 684 490**

 **24/7 construction response line: 1800 775 465**

 **projects@transport.nsw.gov.au**

 **www.transport.nsw.gov.au/mtms**

Translation



If you require the services of an interpreter, please contact the Translating and Interpreting Service on **131 450** and ask them to contact Transport for NSW on **1800 684 490**.

An interpreter will assist you with translation.