

More Trains, More Services

Mortdale Maintenance Centre Upgrade



Project team on site during a pre-start briefing in October

What's the latest news?

To contribute to an improved rail network, Mortdale Maintenance Centre is being upgraded to enable the entire Tangara fleet to be serviced from this location. This work will reduce dead running time as maintenance of the Tangara fleet will be located closer to where trains operate.

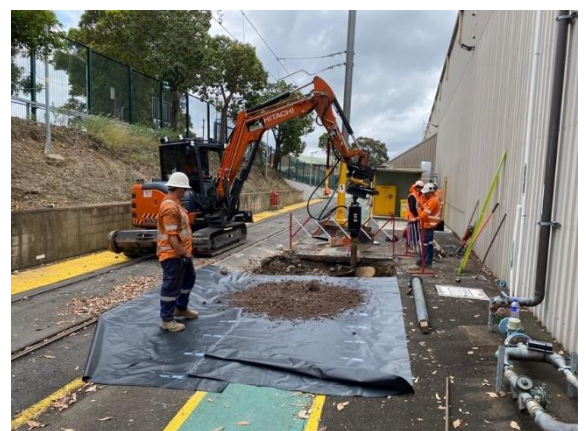
We have spent the last month completing overhead wiring removal, track modifications and continuing the demolition of existing infrastructure to make way for the new maintenance shed.

What's coming next?

Our work this month will continue to take place inside the boundary fencing, and includes:

- Partial demolition of the existing maintenance building
- Installation of a temporary wall for weather-proofing the maintenance building

- Continuing the demolition of two existing storage sheds
- Preparation of the Maintenance Centre ceiling for future cable installation
- Establishment of the project site amenities.



Project team digging bore holes on site in October



What's the scope of work?

- Extension of the existing driveway entrance and construction of a new driveway exit on the western side of the facility
- Installation of a new electrical substation and decommissioning of the existing substation
- Upgrades to the sheds to allow for more efficient maintenance work
- Civil work including track modifications. Drainage upgrades, new retaining walls and associated electrical work

How are we making our sites safe?

In line with current Australian Government guidelines around slowing the spread of Coronavirus and social distancing, all work will be carried out at a safe physical distance where possible and necessary hygiene practices will be observed.

Would you prefer digital updates?

We are always exploring the best ways to connect with the communities where we work while minimising impacts on the environment. To help us reduce paper waste, please visit the project webpage:

yoursay.transport.nsw.gov.au/mtms-mortdale

You can then complete our survey at the bottom of the page to let us know if you would prefer receive our updates to your inbox instead of your mailbox.

About More Trains, More Services

Over the next ten years the More Trains, More Services program will simplify and modernise the rail network so that customers can expect more frequent train services, with less wait times, less crowding and more seats on a simpler, more reliable network.

Contact us

For more information or to subscribe for project updates:

 project information line: 1800 684 490

 24/7 construction response line:
1800 775 465

 projects@transport.nsw.gov.au

 www.transport.nsw.gov.au/mtms

Translation



If you require the services of an interpreter, please contact the Translating and Interpreting Service on 131 450 and ask them to contact Transport for NSW on (02) 9200 0200.

An interpreter will assist you with translation.