

Community update | November 2023

Moss Vale improvements

The NSW Government is planning two separate upgrade projects at Moss Vale. Transport for NSW is calling for community feedback on both projects to help us understand local comments and concerns, while feeding local knowledge back into the delivery phase of the projects.



What we're doing

We are planning two projects at Moss Vale and inviting the community to give feedback.

The Moss Vale Station and Stabling

Yard Upgrade includes three new lifts and accessibility upgrades around the station precinct, and improvements to the train stabling area to accommodate the new Regional Rail fleet.

In parallel, proposed Argyle Street traffic and pedestrian improvements would deliver a package of treatments aimed at reducing delays, improving safety and improving traffic flow around the town centre.



Improving traffic flow



Improvements to public transport



Easing congestion



Improving safety

Help shape our plans

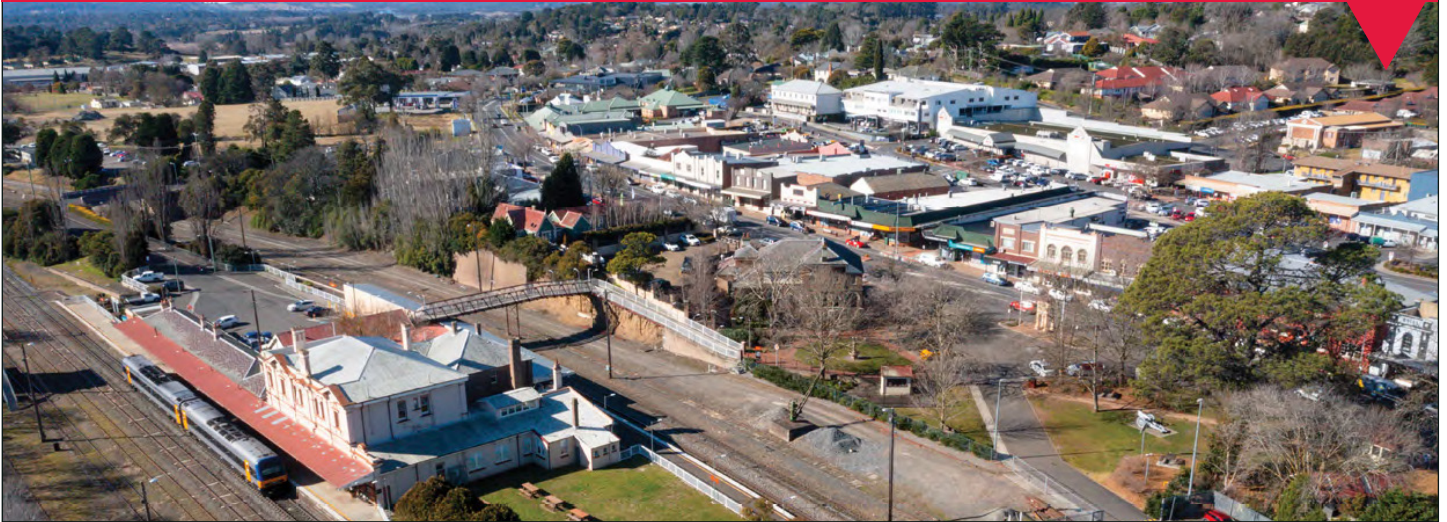
The Moss Vale community is invited to provide feedback on the Moss Vale Station and Stabling Yard Upgrade and Argyle Street traffic and pedestrian improvements.

While these are separate projects, we are combining our consultation in the understanding you may have feedback on both due to their close proximity.

Both projects are detailed in full over the next pages to help you understand what's planned and guide your feedback.

We'd love to hear your comments, queries and concerns by 11.59pm Wednesday 20 December. Community feedback is invaluable to help shape the designs and will be an important part of the detailed design process for both projects.

Moss Vale Station and Stabling Yard Upgrade



Moss Vale Station.

What is the Moss Vale Station and Stabling Yard Upgrade?

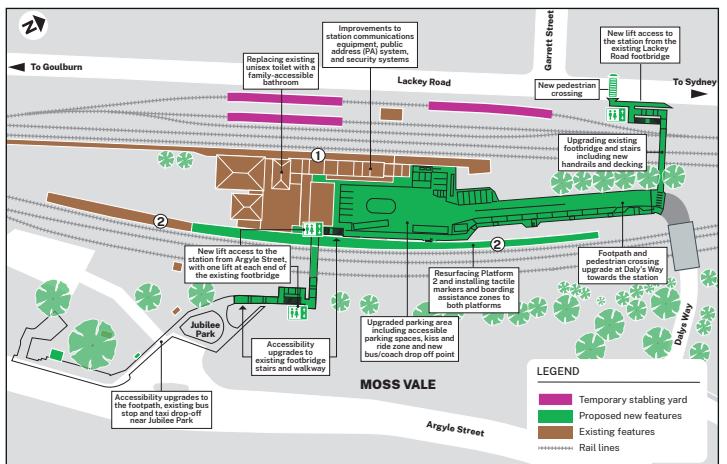
The NSW Government is delivering the Moss Vale Station and Stabling Yard Upgrade to achieve Disability Standards for Accessible Public Transport 2022 (DSAPT) compliance and accommodate the new Regional Rail fleet.

Work will include upgrading the station access, parking, station building, amenities, platforms and stabling yard.

Station access

Upgrading the station's eastern access from Argyle Street, including:

- building two new lifts, one at each end of the existing footbridge
- upgrading existing footbridge stairs and walkway
- upgrading accessibility to the existing bus stop and taxi drop-off near Jubilee Park
- upgrading the Argyle Street entrance including seating and signage, and improved accessible pedestrian pathway at the forecourt.



Design showing Moss Vale Station Upgrade.

Upgrading the station's western access from Lackey Road, including:

- building the new lift providing access to the existing footbridge
- upgrading existing footbridge and stairs including new handrails and decking
- upgrading the footpath and installing new seating at the new lift entrance near Lackey Road
- installing a pedestrian crossing at Lackey Road and Dalys Way

- upgrading footpath accessibility at Dalys Way towards the station, including fencing, drainage, car parking and retaining wall.

Parking

The parking layout within the station forecourt will be formalised, including:

- provision of accessible parking spaces
- new kiss and ride zone
- bus/coach drop off.

Station building, amenities and platforms

Improvements to the Moss Vale station building, amenities and platforms, include:

- adjusting some station doors
- correcting ground levels at the station
- resurfacing Platform 2
- replacing the existing unisex toilet with a family accessible bathroom
- installing tactile markers and boarding assistance zones on both platforms
- improving communications equipment, public address (PA) system, and security systems
- upgrading station power services, communications room, lighting and closed-circuit television (CCTV)
- line marking, landscaping, and adjusting station ticketing facilities.

Share your thoughts

Your feedback is important to us and will inform the final designs of the project.

Go to www.haveyoursay.nsw.gov.au/moss-vale-station, scan the QR code at right or come and chat to us at the combined information session on Monday 4 December. More details Page 4.

Consultation is open until 11.59pm Wednesday 20 December.

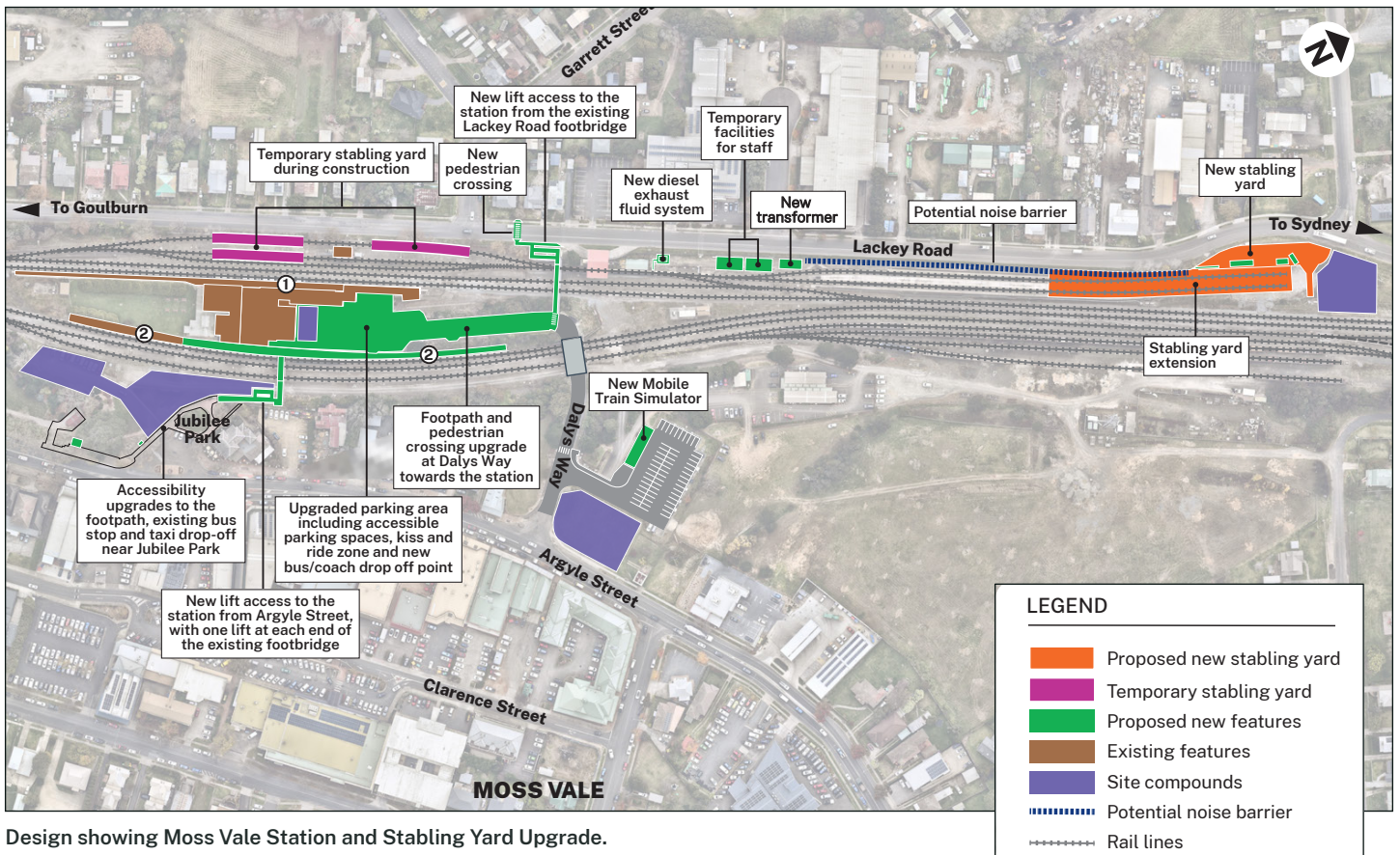
have
your
say



Stabling yard

Upgrades to the train stabling area to accommodate the new Regional Rail fleet, will include:

- lengthening the track at the stabling yard
- installing new pedestrian walkways
- installing a dedicated access driveway for Australian Rail Track Corporation (ARTC)
- upgrading the existing Lackey Road vehicle access including entry and exit gates and a new car park
- building the retaining and potential noise barriers about 250 metres in length along the western side of the stabling yard, subject to further approval.
- upgrading low voltage and shore power supply for existing and new equipment.



Design showing Moss Vale Station and Stabling Yard Upgrade.



We'll be at Moss Vale on 4 December to see you in person.

Come and chat to us in person

We are keen to engage with you in the way you feel most comfortable. We have multiple online feedback options for both projects as detailed in the contact box below and will support these with a face-to-face drop-in session next month.

The community is invited to drop in to the Moss Vale Services Club on Monday 4 December 2023 anytime between 10am and 2pm.

Representatives from both projects will be on hand to answer your questions, provide you with more details or help you submit feedback.

We look forward to seeing you on 4 December!

Moss Vale Station Upgrade and Stabling Yard Upgrade timeline



Moss Vale Station Upgrade will provide a station precinct that is accessible to those with a disability, limited mobility, parents/ carers with prams and customers with luggage.


Contact us

If you have any questions or would like more information, please contact our project teams:

Moss Vale Station and Stabling Yard Upgrade

-  1800 684 490
-  projects@transport.nsw.gov.au
-  www.transport.nsw.gov.au/moss-vale
-  PO Box 484, Wagga Wagga NSW 2650

Argyle Street traffic and pedestrian improvements

-  1800 555 631
-  southprojects@transport.nsw.gov.au
-  transport.nsw.gov.au/argylestreetimprovements
-  PO Box 484, Wagga Wagga NSW 2650



If you need help understanding this information, please contact the Translating and Interpreting Service on 131 450 and ask them to call us on 1800 684 490 (station upgrade) or 1800 555 631 (Argyle Street).

November 2023



Privacy Transport for NSW ("Transport") is subject to the Privacy and Personal Information Protection Act 1998 ("PIIP Act") which requires that we comply with the information Privacy Principles set out in the PIIP Act. All information in correspondence is collected for the sole purpose of assisting in the delivery of this project. The information received, including names and address of respondents, may be published in subsequent documents unless a clear indication is given in the correspondence that all or part of that information is not to be published. Otherwise, Transport for NSW will only disclose your personal information, without our consent, if authorised by the law. Your personal information will be held by Transport. You have the right to access and correct the information if you believe that it is incorrect.



Argyle Street traffic and pedestrian improvements

Argyle Street to be improved

The proposed Argyle Street traffic and pedestrian improvements proposed are in early planning and would deliver a more reliable transport network and ease congestion.

Improvements propose a shift away from private vehicle trips where possible, to alternative modes of transport by improving public transport infrastructure connectivity and useability while protecting the distinct village feel.

Under the proposed changes, the existing road space will be redistributed, and a number of parking spaces removed to ease congestion.

Changes include:

- redistributing existing road space and parking to install designated right turn bays to improve traffic flow and ease congestion at the Argyle Street intersections with Valetta Street, Kirkham Street, Lackey Road and Arthur Street
- installing pedestrian crossings and islands to make crossing Argyle Street safer between Lackey Road and Railway Street, and near Dalys Way
- installing a traffic signal and pedestrian crossing at the Waite Street intersection and removing the crossing 50 metres south bound, along Argyle Street
- restricting right turns out of Arthur Street and Railway Street onto Argyle Street
- resurfacing the road from Arthur Street to Illawarra Highway roundabout.

The proposed changes aim to provide better public transport connectivity and useability, improve reliability and resilience of the road network, facilitate movement for all ages and abilities, and help reduce the frequency and severity of crashes and incidents.

You helped guide us

Community feedback was invaluable in shaping the concept designs for the station upgrade and Argyle Street improvements.

Work on the Argyle Street traffic and pedestrian improvements is expected to start in mid-2024.

Consulting for a better result

We want to give residents the opportunity to ask questions and provide feedback on both projects as an integrated approach, given the timelines are running parallel and there is potential for work to overlap.

We want to hear from you

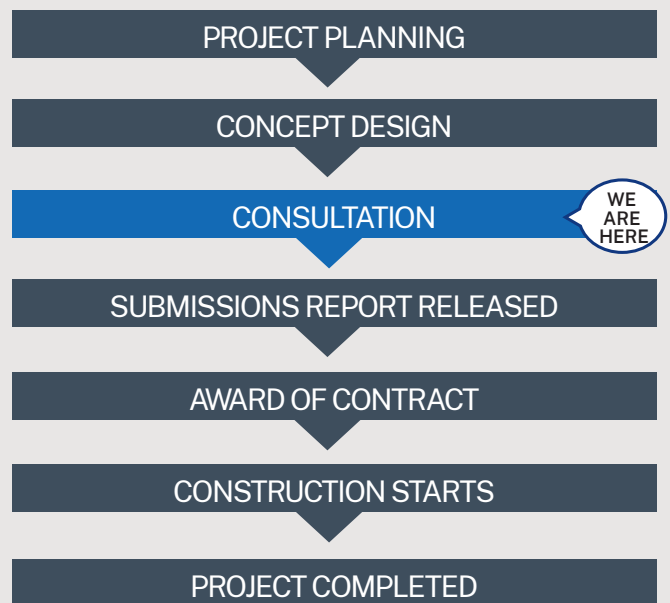
Your feedback is important to us and will inform the final designs of the project.

Go to haveyoursay.nsw.gov.au/argyle-street-improvements, scan the QR code or come and chat to us at the combined information session on Monday 4 December.

See more details on Page 4. Consultation is open until 11.59pm Wednesday 20 December.



Argyle Street traffic and pedestrian improvements timeline



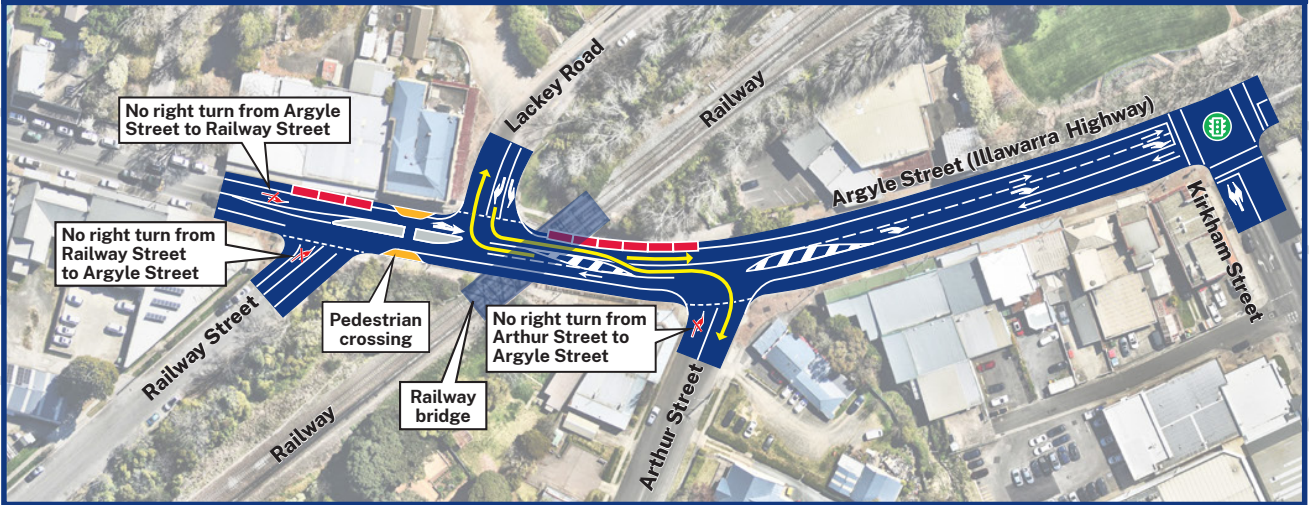
Given they are connected by location and the shared goal is to improve accessibility and safety for the Moss Vale community, Transport wants to give the community an opportunity to consider them together.

We listened

In 2021, the community was invited to provide feedback on early design for areas in need of improvement across the Moss Vale town centre and station precinct.

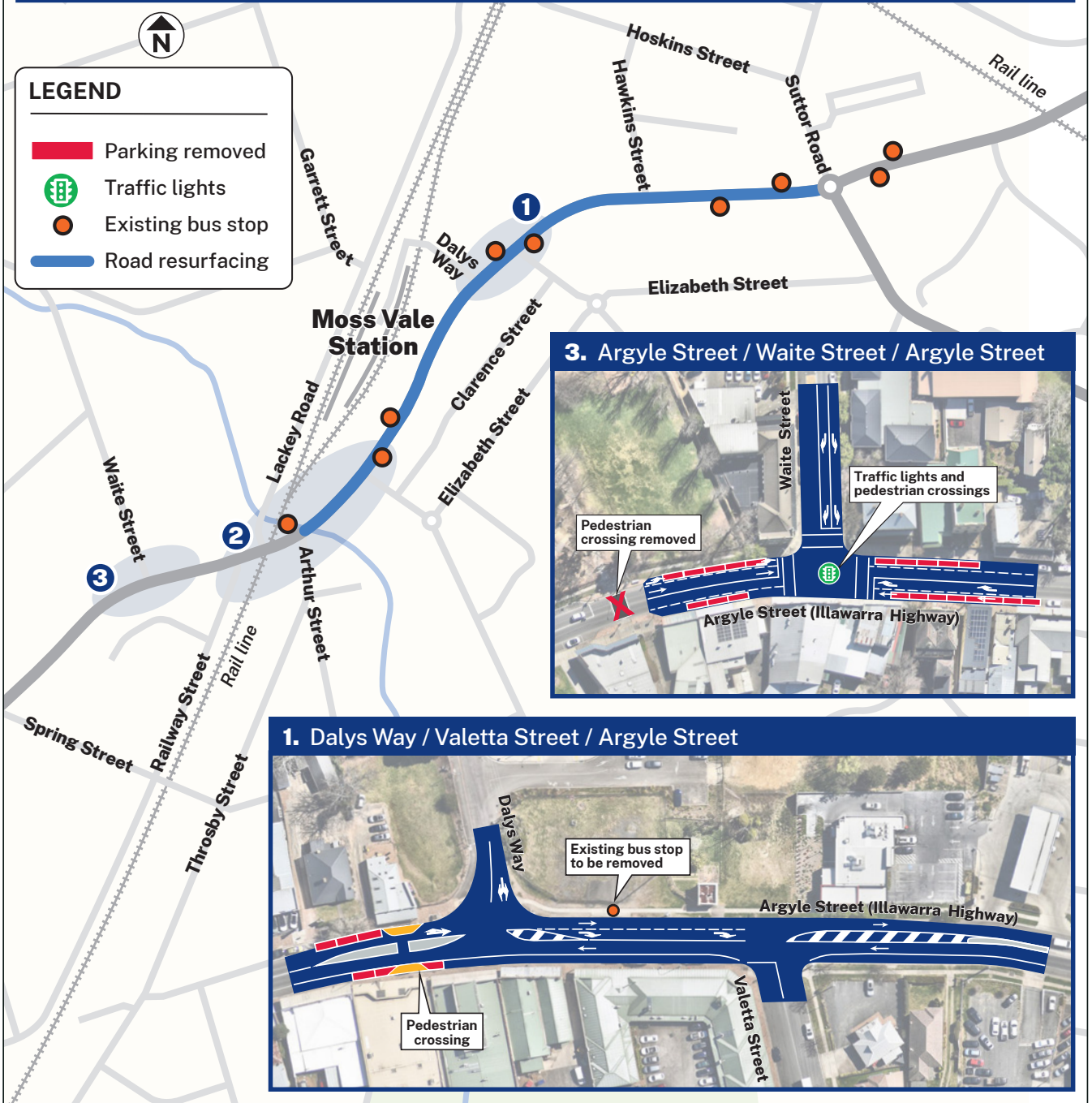
Feedback received from the community, key stakeholder groups and transport customers has helped progress a preferred option for the station upgrade and inform traffic and pedestrian improvements for Moss Vale. The current work represents the next step in this process.

2. Railway Street / Lackey Road / Arthur Street / Kirkham Road / Argyle Street

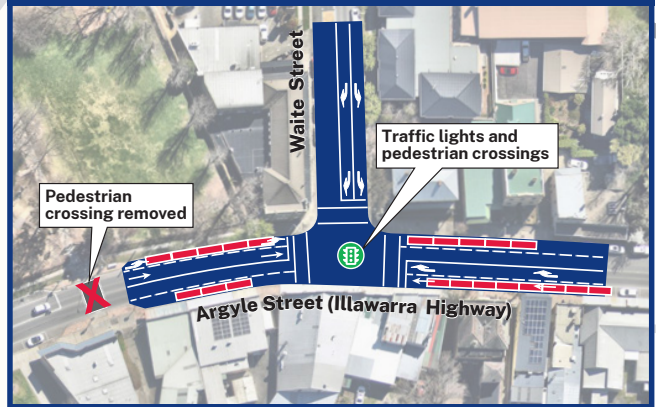


LEGEND

- Parking removed
- ⦿ Traffic lights
- Existing bus stop
- Road resurfacing



3. Argyle Street / Waite Street / Argyle Street



1. Dalys Way / Valetta Street / Argyle Street

