

Sydney Trains

Mount Colah Station Footbridge renewal works

From Saturday 29 October to Sunday 30 October 2022

What we're doing

Sydney Trains plans to replace the existing footbridge at Mount Colah Station, with works to commence early in 2023. These works will also include the provision of new platform lifts and a new footbridge.

To prepare for the construction of a new pedestrian footbridge and lifts at Mount Colah Station, Sydney Trains will complete vegetation and tree removal works around the station area on Saturday 29 October and Sunday 30 October 2022.

How this affects you

Noise

- These works will create additional noise over the weekend.
- **Works will take place from 5am to 8pm each day on Saturday 29 October to Sunday 30 October.**
- Power tools and machinery will be used throughout works, we will select low-noise equipment when the possibility is available.
- Equipment may be delivered to the worksite outside the above times. Some deliveries may occur at night due to daytime travel restrictions on large vehicles.
- Final (finishing) works including the removal of equipment may take place beyond the dates stated above.

Road and Footpath Closure

- Closure of the left (slow) lane of the Pacific Highway in the southbound direction:
 - From **5am to 9am on Saturday 29 October.**
 - Around the clock from **2pm on Saturday 29 October to 11pm on Sunday 30 October.**
- Temporary removal of parking along Pierre Close to enable safe completion of works:
 - From **7am on Monday 24 October to 5pm on Thursday 27 October.**
 - From **7am on Saturday 29 October to 7pm on Sunday 30 October.**
- Detours will be in place for the duration of works. Motorists are encouraged to plan their trip and use alternate routes to avoid the area. Please use trip planner to plan your journey.
- Traffic controllers will be on duty to direct motorists and pedestrians throughout the works.

Other Impacts

- Lights to the station platform and building will be switched off for the weekend.

We apologise for any inconvenience and thank you for your cooperation during these essential works.

Contact us

For upcoming work

transport.nsw.gov.au/sydtraincommunity

To report environmental concerns (24 hours) **1300 656 999**



Visit transportnsw.info

Sydney Trains

Further information

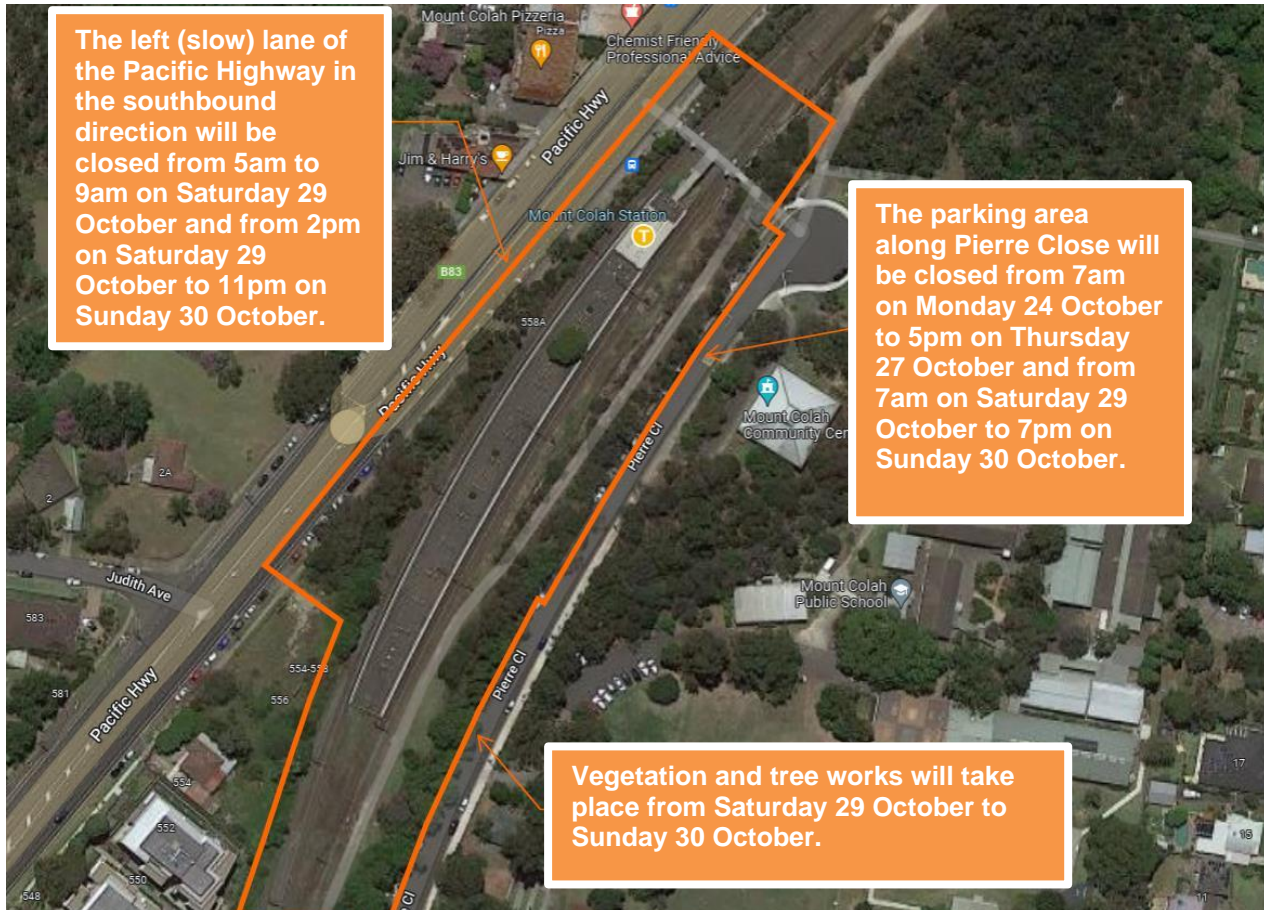


Figure 1: Location of the works



Figure 2: Mt Colah Station Pedestrian footbridge