

New Richmond Bridge and traffic improvements - Stage 2

June 2023



Australian Government



Transport for NSW acknowledges the Dharug people as the Traditional Custodians of the lands on which we work and pays respect to Elders past and present.

Continuing investigation work in Richmond and North Richmond

What work are we doing?

Transport for NSW is continuing investigation work in the Richmond and North Richmond areas to inform design of Stage 2 of the New Richmond Bridge and traffic improvements project. Since February 2023, we have been on site collecting traffic data and conducting ground surveys and geotechnical work.

Investigation work will continue over the next few months. Our activities include drilling holes and digging pits to test soil and pavement composition. As part of this work, we will also use a barge with a drill rig on the Hawkesbury River.

The location of the investigation work is shown on the map on the next page.

The equipment required for our investigations include:

- small tipper trucks
- a truck mounted drilling rig
- small excavators
- survey vehicles
- handheld concrete saw cutter.

When and where we'll be working

This work will be ongoing at various locations throughout the work area and will continue until **Friday 29 September 2023**.

Work will occur from Monday to Friday between 7am and 6pm and Saturdays between 8am and 1pm.

There will be occasions when we may need to perform noisy work or work during the night. If your property could be impacted by nearby night work we will notify you at least one week before this work starts. Our night shift hours would be between 8pm and 7am from Sunday to Thursday. We will not work on public holidays.

How will the work affect you?

Some of our work needs to be carried out at night to minimise traffic disruptions and reduce safety risks to workers and motorists. It may be noisy at times, but we will do everything we can to minimise its impact, including completing the noisier tasks earlier in the shift and staging the work along different parts of the work zone to minimise disruption in the same area.

Traffic changes

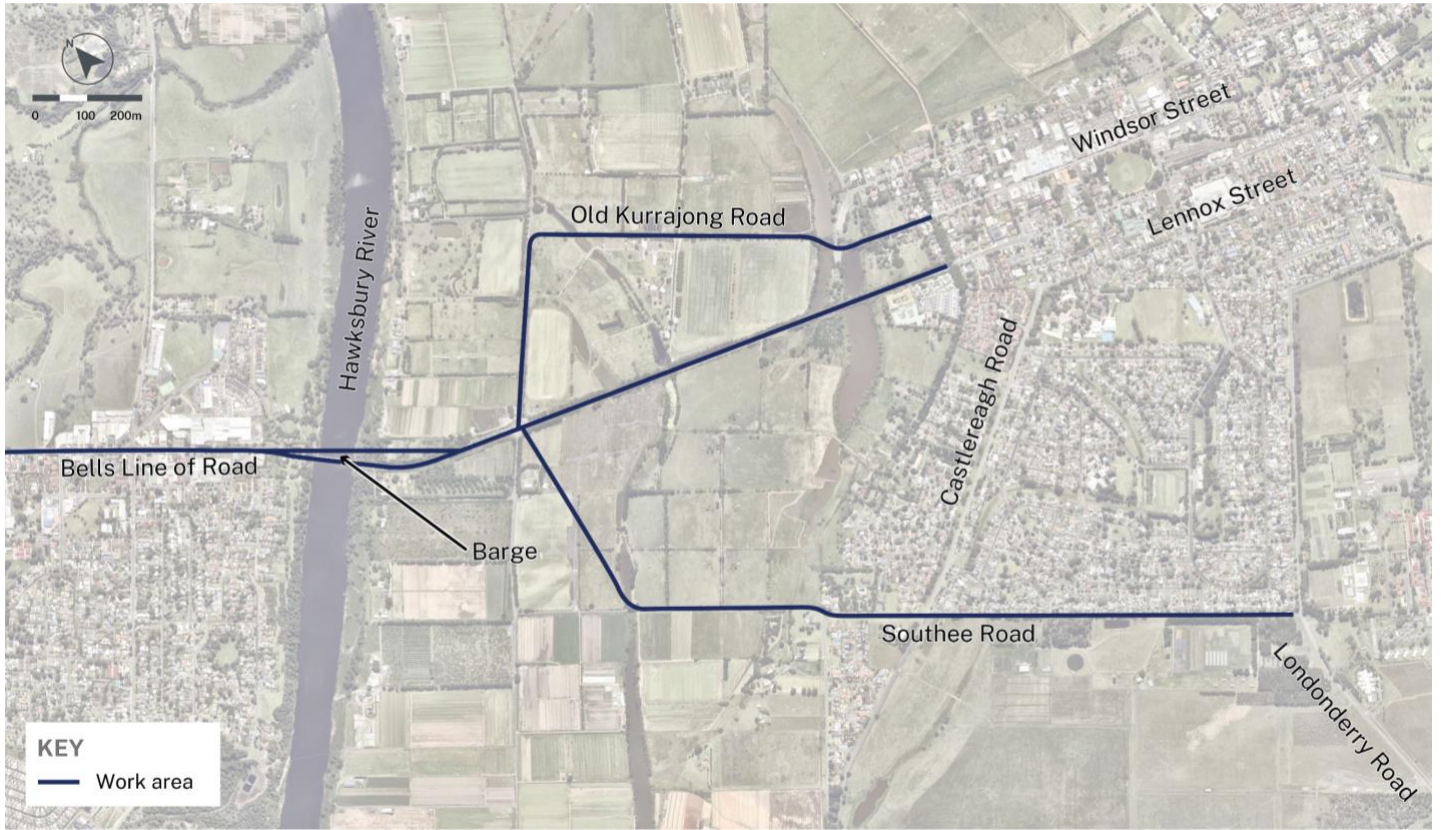
While we will try minimising disruption to traffic, temporary traffic changes will be required at times to ensure the work zone is safe and reduced speed limits may be in place. There may be some low impact work during the day where traffic closures are not required.

Please keep to speed limits and follow the direction of traffic controllers and signs.

For the latest traffic updates, you can call 132 701, visit livetraffic.com or download the Live Traffic NSW App.

Thank you for your patience during this important work.

Location of work area



Contact us



Project Infoline **1800 370 778**



richmondbridge@transport.nsw.gov.au



Visit the online portal go to
nswroads.work/NewRichmondBridge



For the latest traffic updates:

Call 132 701, visit livetraffic.com or
download the app Live Traffic NSW



Interpreter service

For languages other than English call **131 450**
Maltese • Punjabi • Italian • Arabic • Cantonese

Għal servizz tal-interpretar għall-lingwi
oħra barra l-Ingliż ċempel **131 450**

ਅੰਗਰੇਜ਼ੀ ਤੋਂ ਇਲਾਵਾ ਦੂਸਰੀਆਂ ਭਾਸ਼ਾਵਾਂ ਵਾਸਤੇ ਦੁਬਾਸ਼ੀਆ ਸੇਵਾ ਲਈ ਫ਼ੋਨ
ਕਰੋ **131 450**

Per il servizio di interpretariato per lingue diverse dall'ing-
lese chiamare il **131 450**

طلب خدمة الترجمة الشفهية للغات غير الإنجليزية اتصل
بالرقم **131 450**

獲取英語以外的其他語言傳譯協助服務可以致電**131 450**

www.transport.nsw.gov.au/privacy-statement#Your_Privacy