

Changes to upcoming out of hours work at Reservoir Road intersection



What has changed?

We recently notified the community that we would be carrying out work between **Sunday 26 March and Friday 28 July** (weather permitting). However, due to changes in scheduling of the work we will now work between **8pm Sunday 16 April and 5am Monday 28 August** (weather permitting).

Why the change?

Due to programming changes and to lessen the disturbance to motorists and the community, a staggered approach will be taken to the traffic arrangements for the works on Reservoir Road.

What are we doing?

We will carry out works at the Reservoir Road, Prospect Highway intersection and Picrite Close. These will involve drainage work, excavation, placement of material, pavement construction and kerb and gutter installation. Works will take place during day and night and will involve new traffic arrangements for motorists travelling on or to Reservoir Road.

Traffic changes and detours

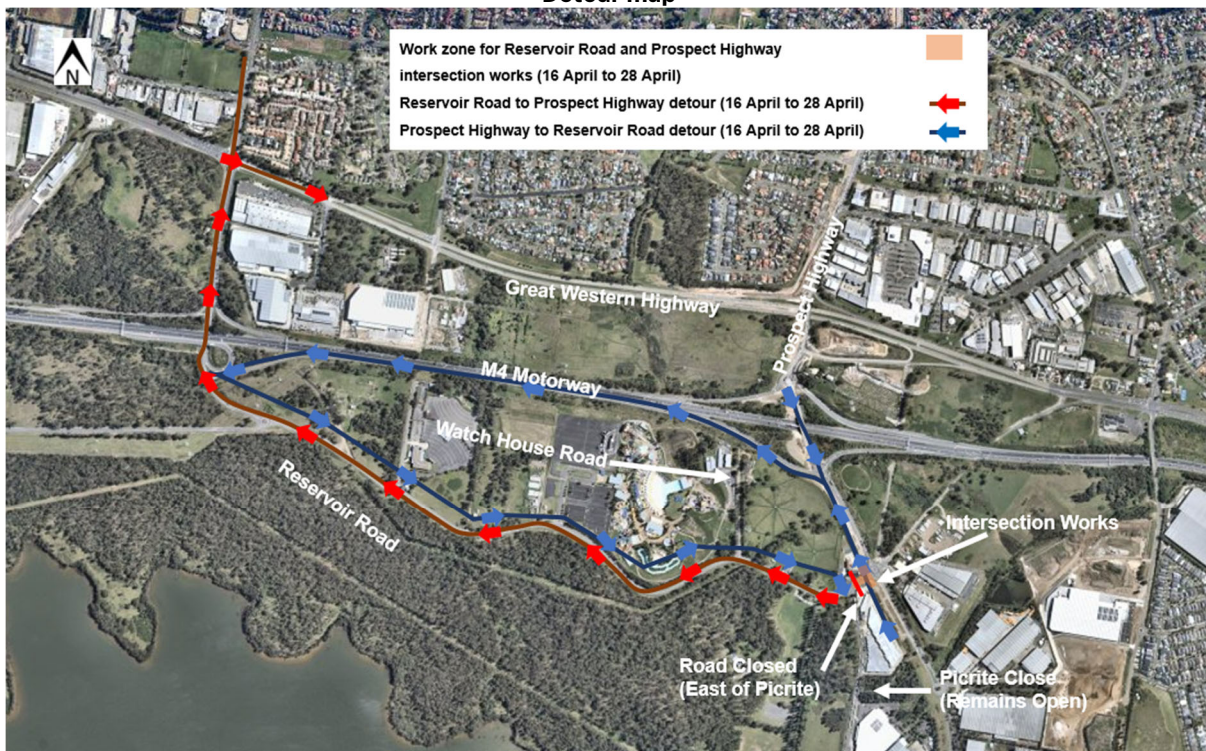
Between 8pm Sunday 16 April and 5am Friday 28 April

The intersection of Reservoir Road and Prospect Highway will be closed in both the westbound and eastbound direction, starting east of Picrite Close. There will be a two-way access on Reservoir Road up to Picrite Close. However, there will be no access to Prospect Highway.

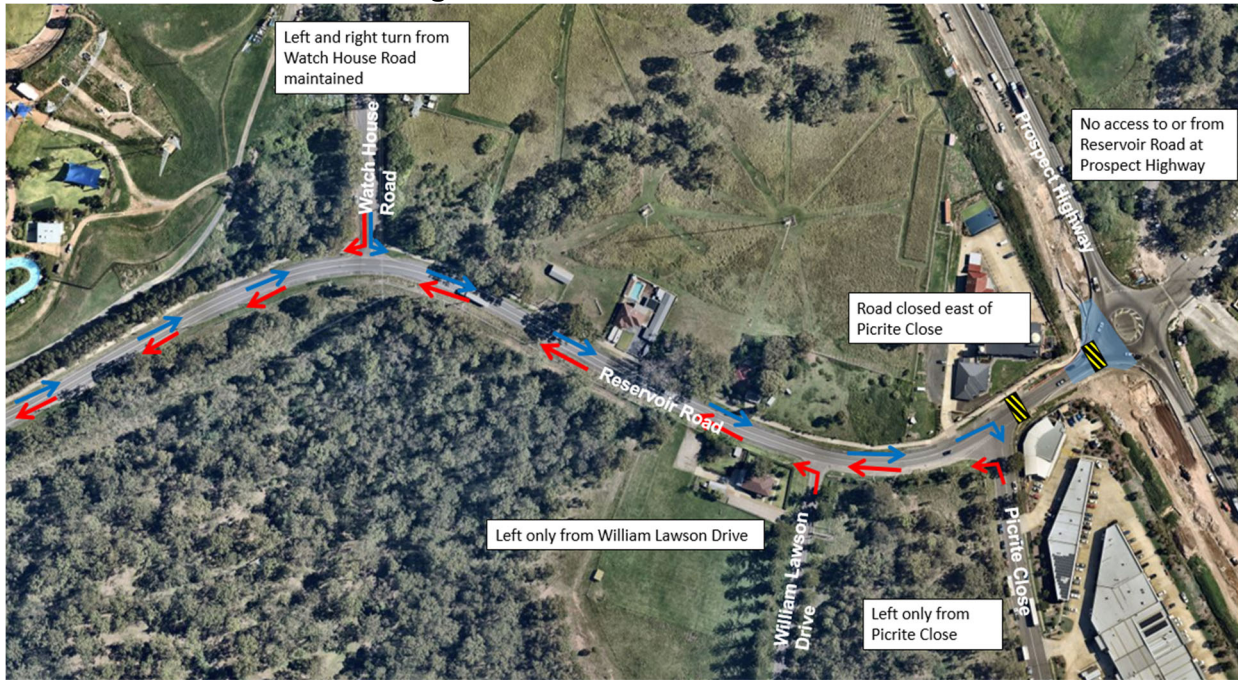
Detours:

- Motorists travelling from Reservoir Road to Prospect Highway will need to detour via the Great Western Highway adding 15 minutes of travel time.
- Motorists travelling from Prospect Highway to Reservoir Road via M4 Motorway will add approximately five minutes of travel time.

Detour map



Traffic changes between Reservoir Road and Picrite Close



Between Friday 28 April and Monday 28 August

The intersection of Reservoir Road and Prospect Highway will be re-opened. However, between Watch House Road and Prospect Highway a one-way traffic arrangement will be in place. Traffic will only be able to travel in an eastbound direction between Watch House Road and Prospect Highway.

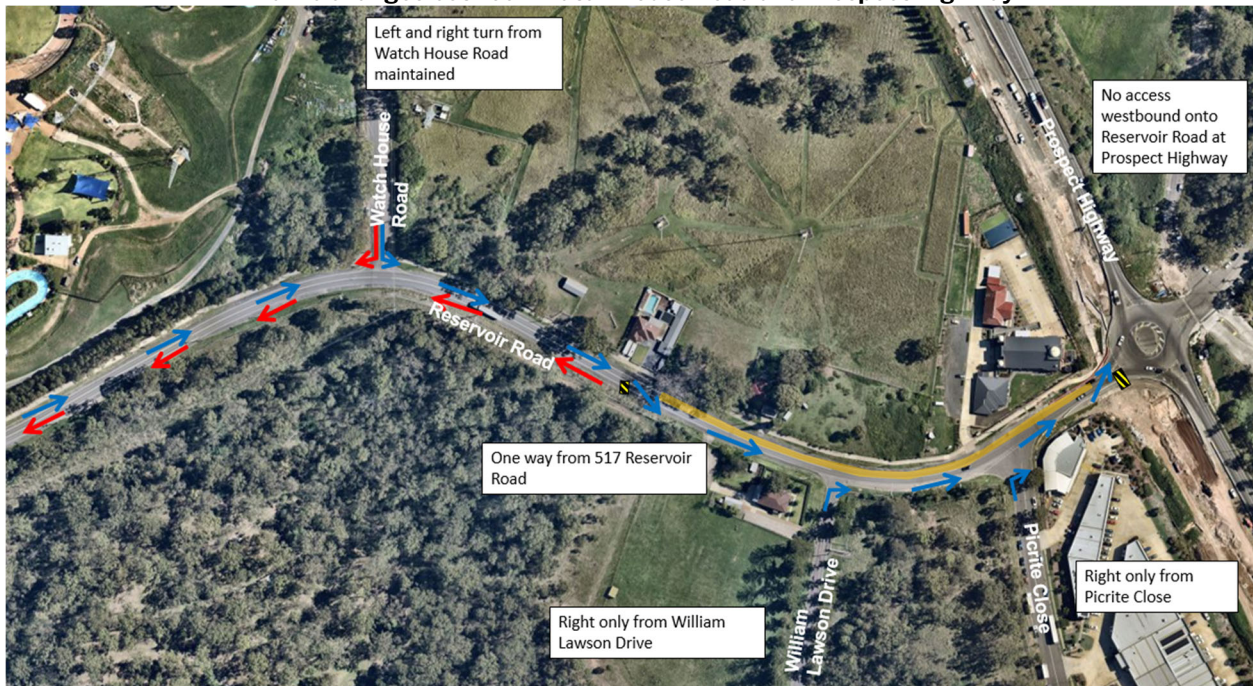
Detours:

- Motorists travelling from Reservoir Road to Prospect Highway will need to detour via the Great Western Highway adding 15 minutes of travel time.
- Motorists travelling from Prospect Highway to Reservoir Road will need detour via M4 Motorway will add approximately five minutes additional travel time.

Detour map



Traffic changes between Watch House Road and Prospect Highway



How will the work affect you?

We will be completing some of our work at night to reduce traffic disruption and any risks to the workers and road users during the day. The night work will involve use of noisy machinery. We will make every effort to lessen the disturbance where possible, completing noisier work earlier in the evening and turning off vehicles when not in use.

Our work hours

During this time, our work hours will be:

- Day – Monday to Friday 7am to 6pm and Saturday 8am to 5pm
- Night – Sunday to Thursday: 8pm to 5am

CONTACT US

If you have any questions, please contact our Community Team. Call or email us.



Get project updates direct to your inbox. Scan the QR code or email your request.



1300 660 275 (during business hours)



prospecthighway@fultonhogan.com.au

If you need help understanding this information, please contact the Translating and Interpreting Service on 131 450 and ask them to call us on 1300 660 275



nswroads.work/prospecthighway



Transport for NSW acknowledges the Dharug people as the traditional owners and custodians of this land and pays respect to Elders past and present.