

Upcoming work and temporary closure of the M4 Motorway eastbound on and off ramps at Prospect Highway

Prospect Highway Upgrade

December 2023



Transport for NSW acknowledges the Dharug people as the Traditional Custodians of the lands on which we work and pays respect to Elders past and present.

The Australian and NSW Governments are upgrading 3.6 kilometres of Prospect Highway between Reservoir Road, Prospect and St Martins Crescent, Blacktown to reduce congestion and help meet future traffic demands on this corridor.

What work are we doing?

Work includes:

- excavation and pavement demolition
- placement of materials
- pavement construction
- kerb and gutter installation
- traffic signal installation
- line marking and barrier installation
- utilities relocation work

When and where we'll be working?

We will carry out works at the M4 Motorway roundabout and eastbound on and off ramps at Prospect Highway from **Wednesday 10 January to Monday 22 January** (weather permitting).

Our work schedule

During this period, we will be working 24 hours a day to complete this work as quickly as possible.

What will this mean for you?

The night work will involve some use of noisy machinery. We will make every effort to lessen the disturbance where possible, completing noisier work earlier in the evening and turning off vehicles when not in use.

Traffic changes

To complete works on the M4 Motorway eastbound on and off ramps, there will be temporary traffic changes from **Wednesday 10 January to Monday 22 January** (weather permitting).

Temporary closure of M4 Motorway eastbound off ramp from **8pm Friday 12 January to 5am Monday 15 January** (weather permitting).

Detour:

Motorists travelling on the M4 Motorway wanting to exit on the Prospect Highway eastbound off ramp will need to detour via Reservoir Road and Great Western Highway adding an extra seven-minute travel time.

Temporary closure of M4 Motorway eastbound on ramp from **8pm Friday 19 January to 5am Monday 22 January** (weather permitting).

Detour:

Motorists wanting to access the M4 Motorway eastbound on ramp at Prospect Highway will need to detour via Ponds Road, Great Western Highway and Reservoir Road adding an extra four-minute travel time.

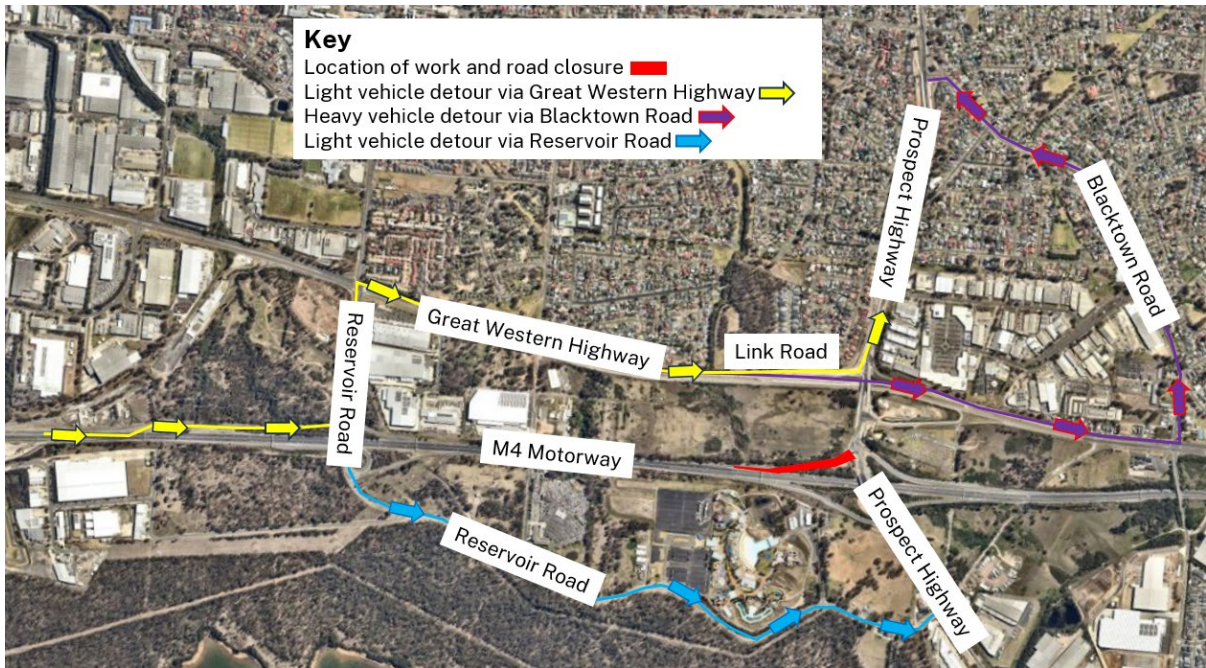
Electronic message signs will be activated in both directions. Traffic control will be in place during work hours for the safety of workers and road users.

Motorists should follow signs and the traffic controller's direction and allow extra time as there may be minor delays.

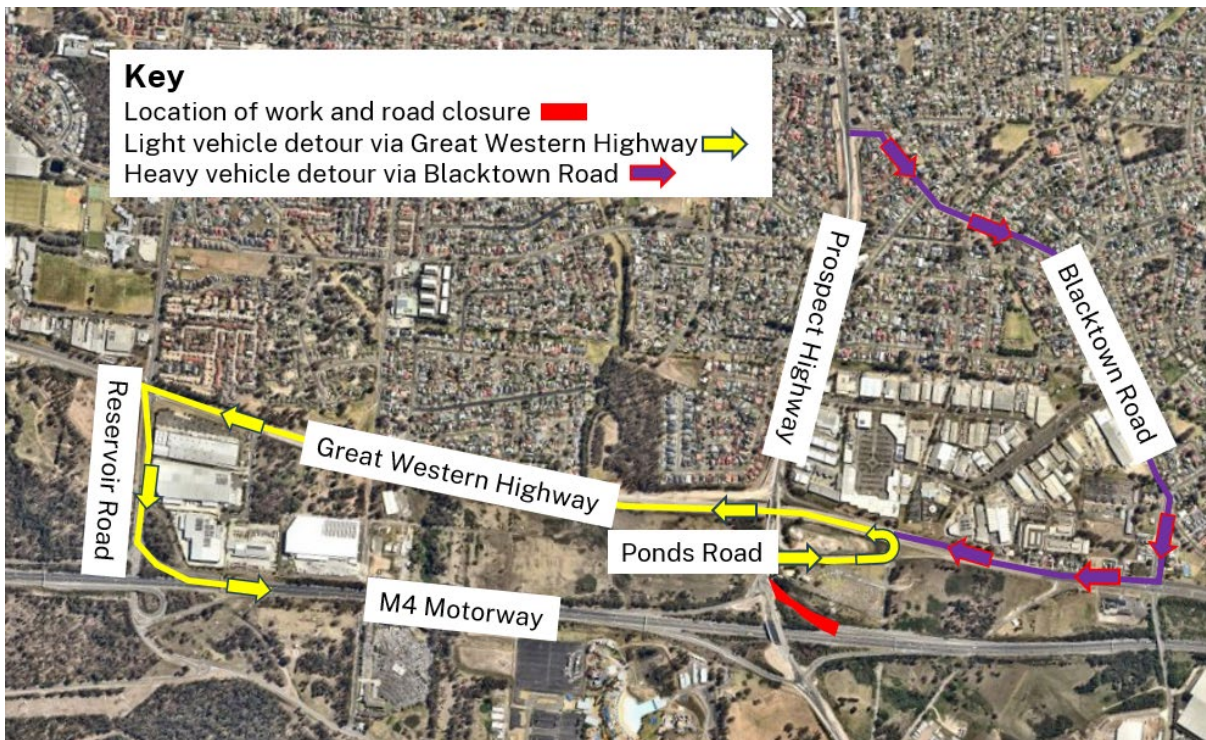
Permanent traffic changes

At the completion of the works, the existing roundabout will be decommissioned, and a new signalised intersection will be operational.

Detour – M4 Motorway eastbound off ramp



Detour – M4 Motorway westbound on ramp



Contact us



1300 660 275 (during business hours)



prospecthighway@fultonhogan.com.au



nswroads.work/prospecthighway



Get project updates direct to your inbox. Scan the QR code or email your request.



Interpreter service

For languages other than English call 131 450
Arabic • Greek • Hindi • Mandarin • Vietnamese

لطلب خدمة الترجمة الشفهية للغات غير الإنجليزية اتصل
بالرقم 131 450

Για υπηρεσίες διερμηνείας σε άλλες γλώσσες εκτός από
τα Αγγλικά καλέστε το 131 450

अंग्रेजी के अतिरिक्त अन्य भाषाओं के लिए दुभाषिया सेवा
131 450 पर कॉल करें

获取英语以外的其他语言口译协助服务可以致电131 450

Để có dịch vụ thông ngôn cho các ngôn ngữ khác tiếng
Anh, gọi số 131 450



To subscribe to the email distribution list for this project, please contact projects@transport.nsw.gov.au