



## Traffic changes on the Newell Highway, south of Parkes from Wednesday 31 May

The Australian and NSW Governments are jointly funding the \$187.2 million Newell Highway upgrade, Parkes Bypass to improve connectivity, road transport efficiency and safety for local and interstate motorists.

Construction of the Southern connection of the Parkes Bypass to the existing Newell Highway is commencing, and an 800-metre section of the existing highway, near Barkers Road, south of Parkes will be under traffic control from **Wednesday 31 May 2023** until **late July 2024**, weather permitting.

To assist with traffic management and to safely enable road construction which includes earthworks, drainage and pavement works, the work will be carried out in three stages with various changed traffic conditions:

### Stage 1 (31 May 2023 – July 2023):

- Barriers will be installed on the Newell Highway to allow for temporary widening of the western side of the road to support traffic management. Traffic will be required to be stopped at times to allow barriers to be placed.

### Stage 2 (August 2023 – December 2023):

- Traffic will be switched onto western side of road, whilst the eastern side of the new alignment is constructed behind barriers. There will be one lane of traffic in each direction during this time.

### Stage 3 (December 2023 – July 2024):

- Traffic will be switched onto the eastern side while the western side of the new alignment is constructed behind barriers.

Once these works are complete the Newell Highway will be reopened in the final design arrangement. We have included a map below to show the location of changed traffic conditions during the works.

We will be working between **7am** and **6pm** from **Monday to Friday** and **8am to 6pm on Saturdays**. Work is expected to be completed in **fifteen months**, weather permitting. We will let you know in advance if we need to do any work outside these times.

## How will the work affect you?

A reduced speed limit will be in place during the works with one lane of traffic in each direction maintained wherever possible. There will be times (particularly during Stage 1) where traffic will need to be stopped.



Australian Government



During Stage 2, Parkesborough Road will be temporarily closed at the intersection of the Newell Highway as the area is within the construction zone. Alternate access onto Parkesborough Road during this time will be via The Welcome Road.

Barkers Road intersection will remain open at all times.

To assist with traffic management and to ensure the safety of motorists, the northbound overtaking lane on the Newell Highway will be shortened. This will be clearly line marked signposted to avoid confusion.

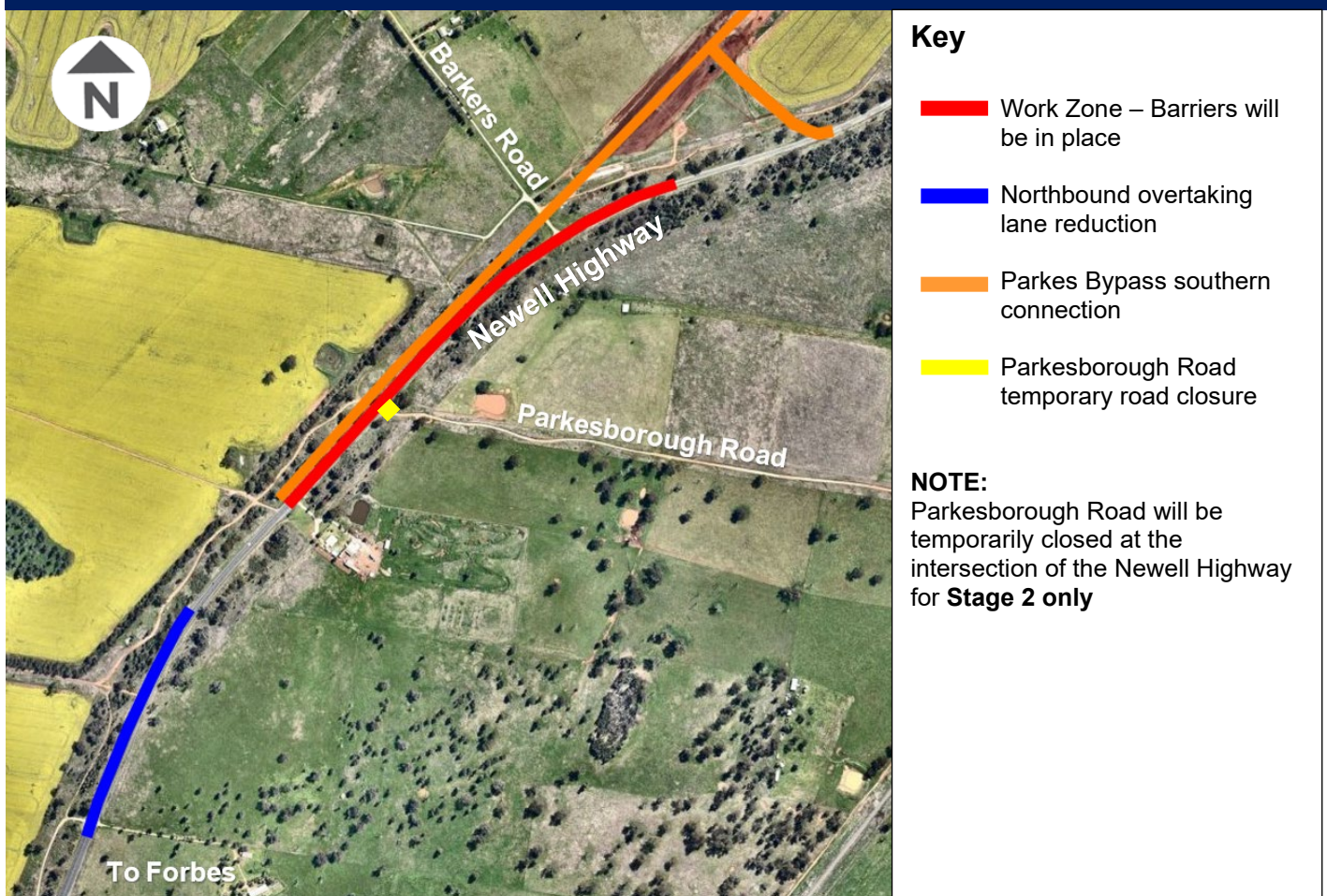
Please keep to speed limits and follow the direction of traffic controllers and signs. For the latest traffic updates, you can call 132 701, visit [livetraffic.com](http://livetraffic.com) or download the Live Traffic NSW App.

## Contact

If you have any questions, please contact our Community Liaison Officer Taylah Jones on 1800 741 636 (option 4) or [parkes.community@georgiou.com.au](mailto:parkes.community@georgiou.com.au)

For more information on our projects, visit [nswroads.work/parkesbypass](http://nswroads.work/parkesbypass). Thank you for your patience during this important work.

### Location of changed traffic conditions for the Southern Connection



If you need help understanding this information, please contact the Translating and Interpreting Service on 131 450 and ask them to call us on 1800 741 636 (option 4)