

Extended partial closure of Thomas Street, Parkes

Newell Highway Upgrade - Parkes Bypass

November 2023



Transport for NSW acknowledges the Wiradjuri People as the Traditional Custodians of the lands on which we work and pays respect to Elders past and present.

The Parkes Bypass will improve connectivity, road transport efficiency and safety for local and interstate motorists.

What work are we doing?

Continuing to safely transport excavated material that potentially contains Naturally Occurring Asbestos (NOA) within the project site between Condobolin Road and Painter Street to safely encapsulate it.

When and where we'll be working

The partial closure of **Thomas Street between the intersections of Moulden Street and Reedsdale Road** will continue to be in place during work hours to enable this material to be transported safely.

Work hours are from **7am to 6pm on weekdays** and from **8am to 6pm on some Saturdays**.

School buses and oversize overmass (OSOM) vehicles greater than 3.5 metres in width are exempt and will be permitted access during the closure through the guidance of traffic control and escort vehicle.

This work is expected to be completed in **April 2024**, weather permitting.

As part of the Parkes Bypass project, **this section of Thomas Street will eventually be closed permanently**.

We expect this closure to happen in late 2024, and will keep the community updated.

What will this mean for you?

You may notice:

- Noise from machinery and equipment
- Workers in protective clothing including coveralls and masks.

Managing our Impacts

We aim to manage our work to avoid impacts to the community and the environment.

This includes:

- Using watercarts to suppress dust
- Additional air monitors are established around the worksite to ensure dust and asbestos fibres do not pass the site boundary
- Turning off machinery and vehicles when not in use.

Naturally Occurring Asbestos

This work is taking place in accordance with the Asbestos Management Plan.

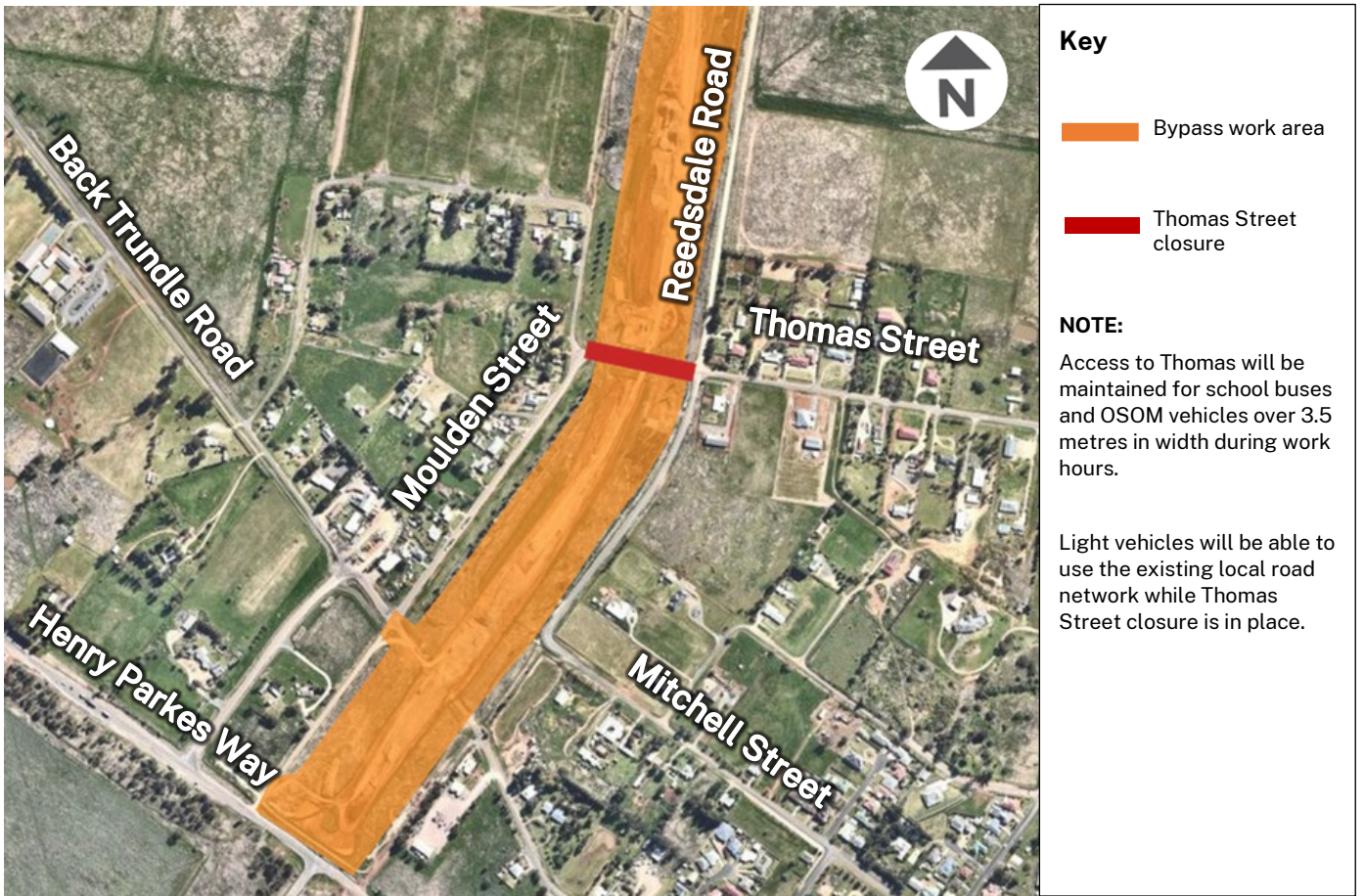
This plan has been developed in consultation with SafeWork and the Environmental Protection Authority.

All works are being undertaken under full asbestos management controls, overseen by a Class A Asbestos Supervisor and Licensed Asbestos Assessor.

For more information about how we are managing NOA within the project site, refer to our latest updates and FAQs on our website nswroads.work/parkesbypass



Location of Thomas Street road closure



Contact us



Project Infoline **1800 741 636 (option 4)**



Interpreter service

For languages other than English call 131 450
Arabic • Cantonese • Hindi • Mandarin • Vietnamese

لطلب خدمة الترجمة الشفهية للغات غير الإنجليزية اتصل بالرقم
131 450

獲取英語以外的其他語言傳譯協助服務可以致電**131 450**

अंग्रेज़ी के अतिरिक्त अन्य भाषाओं के लिए दुभाषिया सेवा **131 450**
पर कॉल करें

获取英语以外的其他语言口译协助服务可以致电**131 450**

Để có dịch vụ thông ngôn cho các ngôn ngữ khác tiếng Anh,
gọi số **131 450**



parkes.community@georgiou.com.au



nswroads.work/parkesbypass



51-55 Currajong Street
Parkes, NSW 2870



For the latest traffic updates:

Call 132 701, visit livetraffic.com or
download the app Live Traffic NSW