

## Prospect Highway upgrade Construction Update



*The Australian and NSW Governments are upgrading Prospect Highway between Reservoir Road, Prospect and St Martins Crescent, Blacktown to reduce congestion and help meet future traffic demands on this corridor.*

### What we have achieved so far?

Since our last update we have:



• Commenced final landscaping including tree planting across several areas in particular, between Harrod and Lancelot streets.



• Completed works upgrading the western side of the Reservoir Road intersection.



• Installed panels on retaining walls near the M4 Motorway

### What's next on Prospect Highway?

From June through to August, several key construction milestones will take place. Our focus will be on work between the Foundation Place intersection and Bungarribee Road.

Key works will include:

- construction of retaining walls and noise walls along the northbound and southbound boundaries
- installation of barriers, shared pathway, street lighting and signage along the project including on the M4 and Great Western Highway bridges
- demolition of the second half of the existing pedestrian underpass linking Sher Place and Old Church Lane
- construction of new pavement at Tudor Avenue, Lancelot Street and Keyworth Drive
- relocation of utilities
- stormwater drainage installation
- upgrading of curb, guttering and median islands
- landscaping and planting of vegetation
- earthworks, including hammering, drilling and excavation

### How will the work affect you?

Our work will be noisy at times, but we will do everything we can to lessen the disturbance including using non-tonal reversing alarms, switching off vehicles when not in use and staging the work in different locations. Any noisy work such as cutting road pavement will be undertaken before 11pm whenever possible.

### Get ready to drive on the NEW Prospect Highway

Over the last twelve months, our team has been busy at work building the new additional lanes on the Prospect Highway and they are nearly finished!

This means we will shortly begin moving traffic onto the newly built roadways and the three newly built bridges. This will allow our team to start rebuilding and upgrading the old section of the Prospect Highway and original bridges.

Motorists may see changed line marking on the road once we move traffic onto the new sections of the highway. All changes will be done overnight to limit traffic effects and for the safety of our workers. Motorists should drive to conditions and follow the directions of traffic controllers and road signage.



Laying permanent asphalt during recent Reservoir Road intersection shutdown.

### Where will work take place?

## Prospect Highway Upgrade construction work area



### Stormwater and utilities installation

From June through to August, the team will continue relocation and installation of several utilities and stormwater drainage underneath and adjacent to Prospect Highway including starting drainage lines on the southbound side of the Prospect Highway following moving of traffic to the newly constructed pavement.

We are trying to carry out as much of these works as possible during the day, behind barriers. Some of these works need to take place at night when there is less traffic, and it is safer for our workers and for motorists.

These works may be noisy at times. We will limit high noise activities to take place before 11pm.

These works are being done to allow the widening of the road, install the additional drainage required and the traffic lights along Prospect Highway.

### Intersection pavement works

In the coming months, we will be carrying out major pavement works at some of the intersections and key areas along Prospect Highway. These works involve digging out sections of the existing roadway bringing in a new foundation layer and then asphaltting the surface and line marking.

**Works will occur 24 hours a day for between three and five days at a time, for one to two weeks.** These works need to be completed continuously to safely construct the new roadway.

### Keyworth Drive

Work is scheduled to begin in June and will be completed over one to two weeks, subject to weather and approvals. **Works will occur day and night between Sunday evening and Friday afternoon.** No work will occur on weekends at this location during this period.

There will be changed traffic conditions at this intersection. During the work period, access to and from Keyworth Drive will be closed. Local traffic will continue to be able to access Prospect Highway via Tudor Avenue and Lancelot Street. We will contact residents and businesses closer to the date.

### Lancelot Street

Work is scheduled to begin in July and will be completed over two to three weekends, subject to weather and approvals. **Works will occur day and night between Friday afternoon and Monday morning.** No work will occur on weekends at this location during this period.

There will be changed traffic conditions at this intersection. During the work period, access from Lancelot Street to Prospect Highway will be closed. Local traffic will be able to access Prospect Highway via Keyworth Drive. Access from Prospect Highway to Lancelot Street will remain open. We will contact residents and businesses closer to the date.



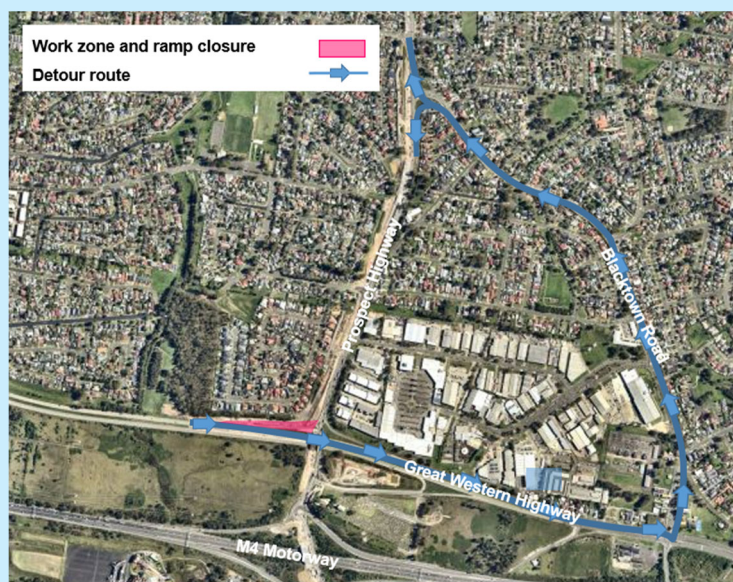
## Construction Update

### Traffic changes

During construction, the speed limit on this section of the Great Western Highway has been reduced to 60km/hr. Within the work zone, further temporary speed reductions will be in place particularly during night works.

There may also be changes to traffic conditions on Blacktown Road and Prospect Highway. Please keep to speed limits and follow signs and traffic controllers' directions. Our work may affect travel times so please allow additional travel time. For the latest traffic updates, call 132 701, visit [www.livetraffic.com](http://www.livetraffic.com) or download the Live Traffic NSW App.

### Lane closures and ramp closures on the Great Western Highway and M4 Motorway



Scheduled lane and ramp closures and detours on the Great Western Highway and M4 Motorway will continue from **Thursday 1 June to Thursday 31 August** to ensure the work zone is safe as we carry out works to install parts for the new bridges over these roads, construct new ramp pavements and complete stabilisation works on either side of the new bridges.

As part of these closures, we will be closing the Great Western Highway off ramp in early June for **two weeks** in order to complete pavement works on the ramp. During this closure, traffic will be detoured via Blacktown Road as per the map on the right. The detour is only expected to add two minutes of additional travel time.

Electronic messaging signage will be activated in both directions, and traffic control and further

reduced speed limits will be in place during work hours for the safety of workers and road users. Completion of all work will depend on weather and site conditions and is subject to change.

### Temporary relocation or closure of bus stops

As works progress on Prospect Highway, some bus stops will need to be temporarily closed or relocated to construct new pavement, kerb and the shared pathway. Changes will be advised at individual bus stops in advance of these changes to inform customers of the alternate bus stop locations.

### Temporary closure of Tudor Avenue

From June, we will be temporarily closing Tudor Avenue for up to **12 weeks** while we complete construction of the new pavement and intersection in this area.

Electronic messaging signage will be in place, and traffic control will be in place during work hours for the safety of workers and road users. Completion of all work is dependent on several factors, including weather and site conditions and is subject to change.

During this time, residents will be directed to use Keyworth Drive as an alternative access to and from Prospect Highway.

The detour is only expected to add two minutes of travel time. We will provide more details, including a detour map, closer to the start of works.

### Traffic changes at Reservoir Road

The one-way traffic arrangement along Reservoir Road between Watch House Road and Prospect Highway will continue until Monday 28 August. Traffic can only travel in an eastbound direction between Watch House Road and Prospect Highway.

Motorists travelling from Prospect Highway to Reservoir Road during this period will need detour via M4 Motorway. This detour will add approximately five minutes additional travel time.

## Construction Update

### Our work schedule

During this time, our standard work hours will be:

- Day – Monday to Sunday: 7am to 6pm
- Night – Sunday to Thursday: 8pm to 5am

We will be working from **Thursday 1 June to Thursday 31 August**, weather permitting.

**Night work** will be carried out on some days at specific locations. These night works are required to lessen the disruption to traffic and improve safety for workers and road users.

Our intersection pavement works will be carried out **24 hours a day** for between three and five days at a time including working on weekends.

We will not be working on public holidays.



Concrete deck pour on the new M4 Bridge.

## CONTACT US

If you have any questions, please contact our Community Team. Call or email us.



Get project updates direct to your inbox. Scan the QR code or email your request.



1300 660 275 (during business hours)



[prospecthighway@fultonhogan.com.au](mailto:prospecthighway@fultonhogan.com.au)

If you need help understanding this information, please contact the Translating and Interpreting Service on 131 450 and ask them to call us on 1300 660 275



[nswroads.work/prospecthighway](https://nswroads.work/prospecthighway)



Transport for NSW acknowledges the Dharug people as the traditional owners and custodians of this land and pays respect to Elders past and present.