

Redfern Station Upgrade

New Southern Concourse || Project Newsletter March 2023



Figure 1. Photograph of weekend work on the New Southern Concourse

What happened over the last three months?

Since December, we've made significant progress across all areas of the project. Five trackwork weekends has allowed continued construction of the new footbridge and work on the station platforms. Work has also continued on the shared zones and new station entrances on Little Eveleigh and Marian streets.

We're rapidly completing the paving of the shared zones, with the pavers on Marian Street now sealed, and the sealing of Little Eveleigh Street happening soon.

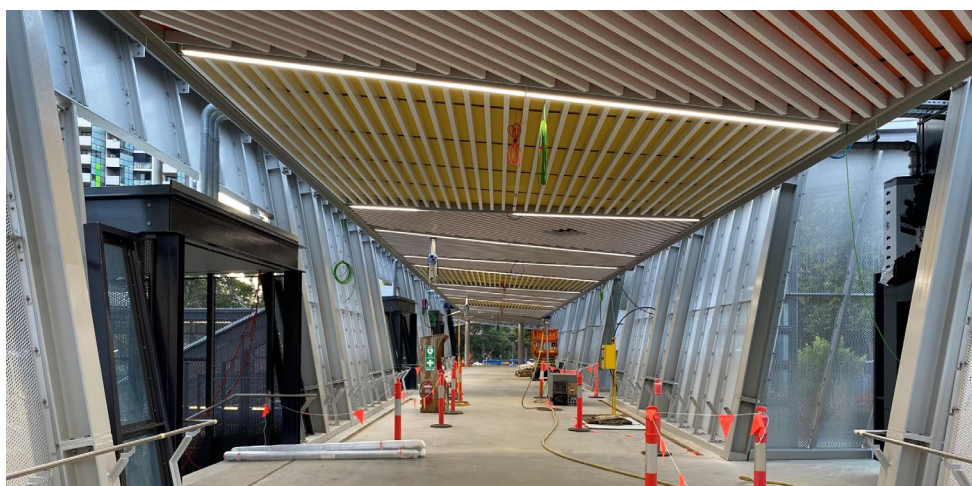


Figure 2: Inside the New Southern Concourse

Project Milestones

(December 2022 to February 2023)

Marian Street

The Marian Street shared zone and the new Marian Street station entrance are nearly complete. Lights have been installed under the canopy and new streetlights installed for the shared zone.



Figure 2. Marian Street entrance paved plaza and Station Services Equipment Room.

The visual design and connection between the station entrance and the new shared zone is now coming together. The natural-earthy tones of the paving around the new station entrance at Marian Street have been designed to complement the colours of the entrance canopy and the Station Services and Equipment Room.

Landscaping around the Marian Street entrance in the coming months will further complement the new paving and structures to provide a warm and inviting entrance to the Station.

In December, a 30 kilowatt solar power system was installed on the Marian Street entrance roof, which will provide power for station services.



Figure 3. Solar power system on Marian Street entrance



Figure 4. Marian Street shared zone

Little Eveleigh Street

Work on the Little Eveleigh Street station entrance has continued with structural steel installation now complete. This includes the new first level flooring and internal staircase.

The Little Eveleigh Street shared zone is almost fully paved and landscaped, with a new drainage system installed. The area outside 125-127 Little Eveleigh Street will be completed in coming months as the new entrance takes shape.

Ivy Street

Ivy Street footpath widening is complete. This improves pedestrian safety and connectivity between Little Eveleigh Street and Abercrombie Street.

As part of the work the stormwater drainage has been improved, as well as new kerbs and gutters and a wider footpath to improve pedestrian capacity and experience on Ivy Street.



Figure 5. Ivy Street footpath widening work

Within the station and on platforms

The New Southern Concourse has taken shape. Stairs, lift shafts, platform canopies, and the roof have been built. Across five weekends from December to February, significant progress on the concourse and the platforms has been made. Almost all bridge roof sheeting, waterproofing (flashing) and bridge perforated screens are now installed.

Power from the Sydney Train Network has been brought into the project and new guard indicators on Platforms 5 and 7 have been installed.

In coming months platform resurfacing and tactile installation will update the look of the platforms to connect to the stairs, lifts and the new concourse. The new concourse Early Warning and Intercommunication System (EWIS) will also be installed.

Upcoming work – April to June 2023

For the safety of our workers and the community, much of our work is completed during scheduled trackwork weekends when trains don't run.

The table below provides an overview of upcoming weekend work over the next three months. Directly impacted

This work may be noisy at times, and we will implement measures to reduce potential impacts such as turning off equipment when not in use and where possible, using noise blankets. We will also notify affected residents closer to the time of work.

Date	Scope Further details will be provided closer to the date	Construction location
2am Friday 7 to 2am Tuesday 11 April (Easter long weekend)	Activities include: <ul style="list-style-type: none">- installation of roofing, drainage and platform canopies- electrical work- general bridge work- platform resurfacing- platform painting- platform tactile installation	Across platforms 1 to 10 and at the North Eveleigh and Marian Street site compounds.
11pm Friday 14 to 2am Monday 17 April		
11pm Friday 21 to 2am Monday 24 April		
2am Saturday 29 April to 2am Monday 1 May		
2am Saturday 6 to 2am Monday 8 May		
2am Saturday 13 to 2am Monday 15 May		
2am Saturday 20 to 2am Monday 22 May		
11pm Friday 9 to 2am Tuesday 13 June (King's birthday long weekend)		
2am Saturday 24 to 2am Monday 26 June		

Other weekend and mid-week night work

In addition to the scheduled trackwork weekends above, work outside standard construction hours will be required at various times for material and equipment removal, deliveries, pre-assembly of bridge components and electrical work. This work is not expected to be noisy and will occur up to three nights per week.

Between Lawson Street and Little Eveleigh Street some weekend and night work is also required to complete service investigation, excavation, stormwater installation, and modify utility services.

Updates on the timing of these activities will be included in our monthly project notifications, and we will work with utility providers to notify directly impacted properties.

If you have any questions or feedback on these dates, **please contact us at projects@transport.nsw.gov.au or call 1800 684 490 by Wednesday 29 March 2023.**

For any urgent complaints or enquiries, please contact us on **1800 775 465.**