

Redfern Station Upgrade

New Southern Concourse

August 2023



Transport for NSW acknowledges the Gadigal people of the Eora Nation as the Traditional Custodians of the lands on which we work and pay respects to Elders past and present.

General project update

The New Southern Concourse at Redfern Station is almost finished and we expect the project to be complete by the end of Spring 2023.

Most of our heavy construction is done and we're now focused on fit-out and final testing and commissioning. Once these activities are complete, the bridge and lifts will be opened to the public.

After the new concourse opens, some finishing work will continue within and around the station. This will include some infrastructure work and improvements to local traffic and road safety. We will keep the community updated as plans for these works are determined.

We would like to thank the community for its ongoing patience and support while we deliver the Redfern Station Upgrade.

- Testing and commissioning services
- Investigative works
- Heritage building works.

When and where we'll work

Our standard construction hours are:

7am-6pm Monday to Friday, and 8am-6pm Saturday.

For the safety of our team, some of our work needs to take place outside the standard hours to coincide with Sydney Trains trackwork, when trains don't run.

In August, we will work on the following weekends:

- **10pm Friday 4 to 6am Monday 7 August**
- **6am-6pm, Saturday 19 and Sunday 20 August**
- **10pm Friday 25 to 6am Monday 28 August.**

Platform 10 pedestrian access will be closed from **6am Saturday 19 to 6pm Sunday 20 August.**

Also in August, painting, electrical work and testing and commissioning of the fire hydrant, drencher and other systems will be conducted at night at 125-127 Little Eveleigh Street. Those impacted will be notified in advance of the work.

Testing and commissioning of emergency warning systems in the New Southern Concourse will also take place during the evening.

Material and equipment removal, deliveries, electrical work, testing and commissioning and painting may also occur up to three nights per week, however these activities are not expected to be noisy.

A schedule of possible out-of-hours work from August to October is outlined in the table on page 3.

What's happening in August?

In August, we'll continue to work on the New Southern Concourse, new station entrances and shared zones in Little Eveleigh and Marian streets and related works on Lawson, Wilson and Ivy streets. Our work includes:

- Installing scaffolding and steel
- Fitting out lifts, stairs, bridges, platforms and buildings
- Roofing across the bridge and platform canopies
- Tiling, painting and cladding installation
- Demolition, material removal and deliveries
- Electrical, stormwater and other utility work
- Excavating, backfilling and concreting
- Installing kerbs, drains, bollards and pavers
- Landscaping including pruning, removal and planting
- Platform resurfacing and tactile installation



What this might mean for you?

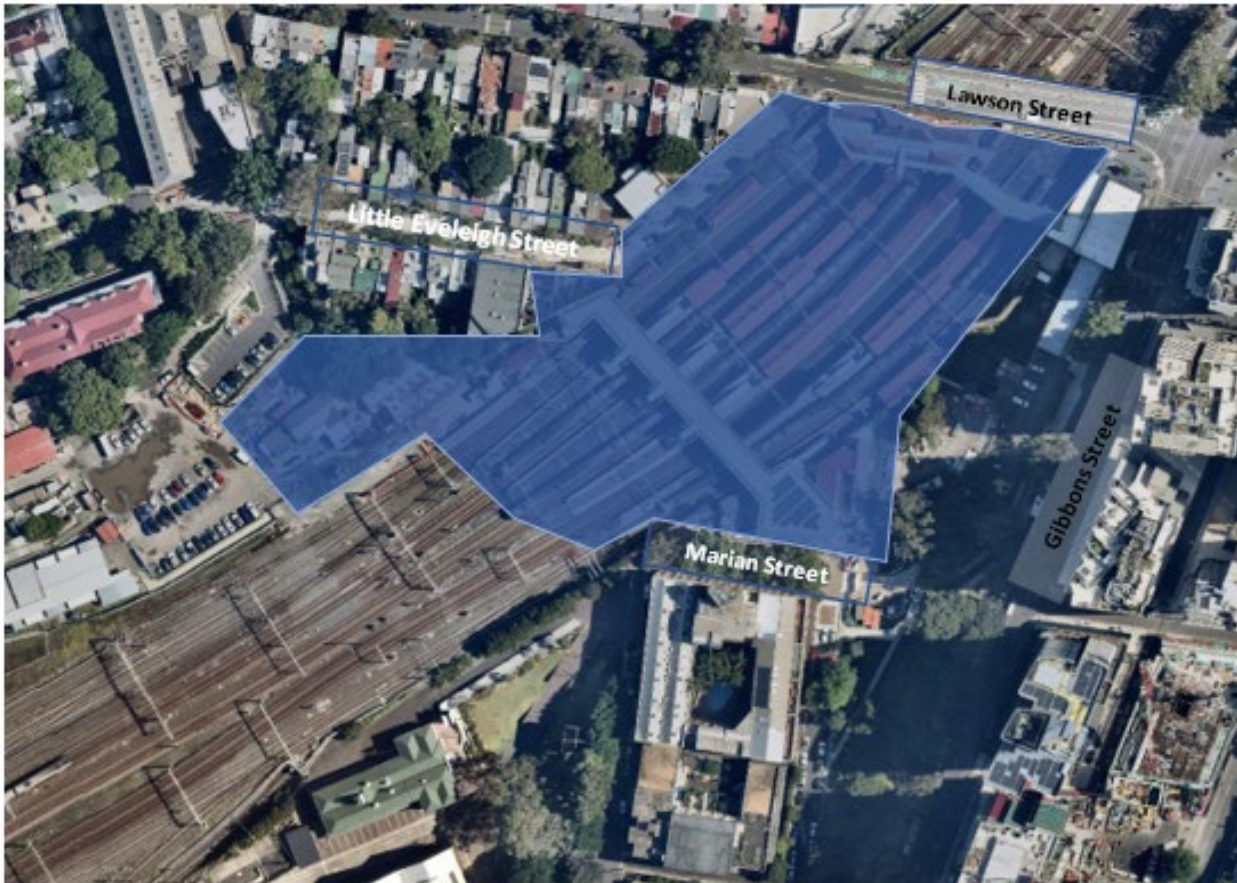
During August you may notice:

- Workers and vehicles
- Traffic controllers and signage
- Noise and vibration from machinery and equipment, such as grinders, jackhammers, power saws, rattle guns, rock hammers/breakers, rollers and vacuum trucks.

Managing our impacts

We reduce noise and vibration by turning machinery off when it's not in use and, where possible, using noise absorbing blankets. For more information about the project's noise and vibration management, please refer to the *Construction Noise and Vibration Management Plan* which is available on the project webpage: transport.nsw.gov.au/redfern.

Redfern Station Upgrade work area



Key	
Work area	

Nearby work

Two pedestrian crossings are being installed on Gibbons Street and Regent Street at Marian Street. This work is not part of the Redfern Station Upgrade project and is being completed by ConnectSydney. ConnectSydney can be contacted on **1800 735 563** or via email at info.harbour@connectsydney.com.au.



Subscribe for updates at projects@transport.nsw.gov.au
statement#Your_Privacy

<https://www.transport.nsw.gov.au/privacy->

Out of Hours Work Lookahead (August-October)		
Date	Scope	Construction location
10pm Friday 4 to 6am Monday 7 August	Further details will be provided closer to the date - testing and commissioning - electrical work - general bridge work - platform resurfacing - painting - platform tactile installation - signage installation - rectification works Some work will occur after the opening of the lifts and new bridge, this includes rectification work and removal of the existing stairs on Platform 10.	Across platforms 1 to 10 and at the North Eveleigh and Marian Street site compounds.
6am-6pm Saturday 19 and Sunday 20 August		
10pm Friday 25 to 6am Monday 28 August		
10pm Friday 8 to 6am Monday 11 September		
10pm Friday 6 to 6am Monday 9 October		
10pm Friday 13 to 6am Monday 16 October		

Other weekend and mid-week night work

In addition to the trackwork weekends above, work outside standard construction hours is also required. Subject to approval, mid-week night work may also occur until October for up to five nights per week. The mid-week work is not expected to be noisy and would be used to complete activities such as:

- electrical work inside the station entrance building on Little Eveleigh Street
- testing and commissioning
- electrical work
- painting
- platform tactile installation
- deliveries.

In addition, roadwork will be conducted at Lawson Street at night and across weekends to build a kiss-and-ride (drop-off / pick-up area) and a new pedestrian crossing. The timing of this work is yet to be determined.

Updates on the timing of these activities will be included in our monthly project notifications, and we will notify directly impacted properties as needed.

If you have any questions or feedback on these dates, please contact us at projects@transport.nsw.gov.au or call **1800 684 490**.

For any urgent complaints or enquiries, please contact us on **1800 775 465**.

Contact us



Project Infoline **1800 684 490**
24-hour Construction Response Line
1800 775 465



projects@transport.nsw.gov.au



PO Box K659
Haymarket, NSW 1240



Visit the online portal go to
www.transport.nsw.gov.au/redfern



Interpreter service

For languages other than English call 131 450
Arabic • Cantonese • Hindi • Mandarin • Vietnamese
لطلب خدمة الترجمة الشفهية للغات غير الإنجليزية اتصل بالرقم
131 450

獲取英語以外的其他語言傳譯協助服務可以致電**131 450**
अंग्रेजी के अतिरिक्त अन्य भाषाओं के लिए दुभाषिया सेवा **131 450**
पर कॉल करें

获取英语以外的其他语言口译协助服务可以致电**131 450**

Để có dịch vụ thông ngôn cho các ngôn ngữ khác tiếng Anh,
gọi số **131 450**

