

# Redfern Station Upgrade

## New Southern Concourse

June 2023



Transport for NSW acknowledges the Gadigal people of the Eora Nation as the Traditional Custodians of the lands on which we work and pay respects to Elders past and present.

### What's happening in June?

In June, we'll continue work on the New Southern Concourse, new station entrances and shared zones in Little Eveleigh and Marian streets and Ivy Street footpath widening. Our work includes:

- Installing scaffolding and steel
- Fitting out lifts, stairs, bridges, platforms and buildings
- Roofing across bridge and platform canopies
- Tiling, painting and cladding installation
- Demolition, material removals and deliveries
- Electrical, stormwater and other utility work
- Excavating, backfilling and concreting
- Installing kerbs, drains, bollards and pavers
- Landscaping including tree pruning, removal and planting
- Platform resurfacing and tactile installation
- Testing and commissioning services
- Heritage building works.

### When and where we'll be working

Our standard construction hours are **7am - 6pm, Monday to Friday and 8am - 6pm, Saturday.**

For the safety of our team, some of our work needs to take place outside the standard hours to coincide with Sydney Trains trackwork, when trains don't run.

In June, we will work on the following weekends:

- **12am Saturday 10 to 6pm Monday 12 June (King's Birthday long weekend)**
- **12am Saturday 24 to 2am Monday 26 June**  
Platform 10 pedestrian access will be closed during the period above.

Material and equipment removal, deliveries, electrical work, testing and commissioning may also occur up to three nights per week, however these activities are not expected to be noisy.

### New Lawson Street crossing

**From Monday 29 May to Friday 16 June** a raised threshold will be installed on Lawson Street across the intersection with Little Eveleigh Street.

The southern footpath on Lawson Street near the work site will be closed and pedestrian detours will be in place via the northern footpath.

Traffic control and signage will assist motorists, cyclists, and pedestrians.

Please see map overleaf for details.

### What this means for you?

You may notice:

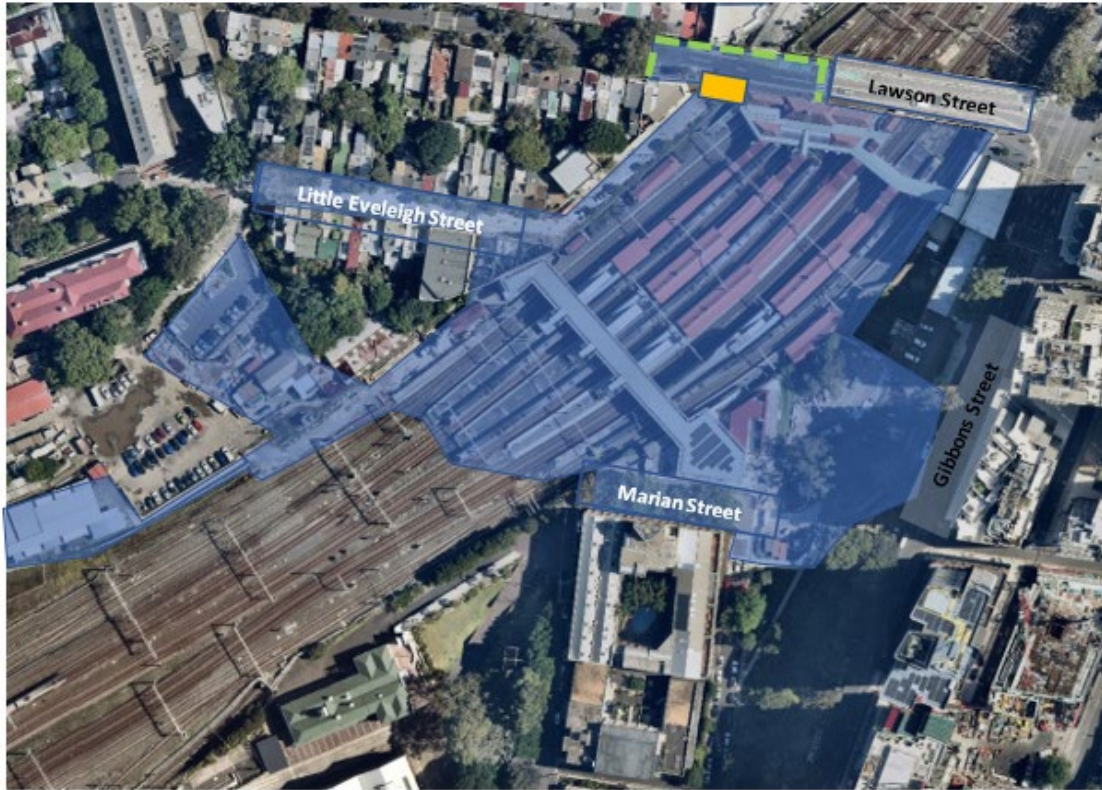
- Workers and vehicles
- Traffic controllers and signage
- Noise and vibration from machinery and equipment, such as grinders, jackhammers, power saws, rattle guns, rock hammers/breakers, rollers and vacuum trucks.

### Managing our impacts

We reduce noise and vibration by turning off machinery when not in use and, where possible, use noise absorbing blankets. For more information about the project's noise and vibration management, please refer to the *Construction Noise and Vibration Management Plan* which can be viewed on the project webpage: [transport.nsw.gov.au/redfern](https://transport.nsw.gov.au/redfern).



## Redfern Station Upgrade work area



Key	
Work area	
Pedestrian detour (29 May to 16 June)	
Installation of new pedestrian crossing	

### Nearby work

Over the coming months, two pedestrian crossings are being installed on Gibbons Street and Regent Street at Marian Street.

This work will be completed at night by ConnectSydney and is not part of the Redfern Station Upgrade project.

ConnectSydney can be contacted on 1800 735 563 or email at [info.harbour@connectsydney.com.au](mailto:info.harbour@connectsydney.com.au).

### Contact us



Project Infoline **1800 684 490**  
24-hour Construction Response Line  
**1800 775 465**



[projects@transport.nsw.gov.au](mailto:projects@transport.nsw.gov.au)



PO Box K659  
Haymarket, NSW 1240



Visit the online portal go to  
[www.transport.nsw.gov.au/redfern](http://www.transport.nsw.gov.au/redfern)



### Interpreter service

For languages other than English call 131 450  
Arabic • Cantonese • Hindi • Mandarin • Vietnamese

لطلب خدمة الترجمة الشفهية للغات غير الإنجليزية اتصل بالرقم  
**131 450**

獲取英語以外的其他語言傳譯協助服務可以致電**131 450**  
अंग्रेजी के अतिरिक्त अन्य भाषाओं के लिए दुभाषिया सेवा **131 450**  
पर कॉल करें

获取英语以外的其他语言口译协助服务可以致电**131 450**

Để có dịch vụ thông ngôn cho các ngôn ngữ khác tiếng Anh,  
gọi số **131 450**