

# Redfern Station Upgrade

## Lawson Street roadworks

December 2023



Transport for NSW acknowledges the Gadigal people of the Eora Nation as the Traditional Custodians of the lands on which we work and pay respects to Elders past and present.

### Night roadwork, Lawson Street

- 6pm, Tuesday 12 to 6am, Wednesday 13 Dec
- 6pm, Wednesday 13 to 6am, Thursday 14 Dec
  
- 6pm, Tuesday 19 to 6am, Wednesday 20 Dec
- 6pm, Wednesday 20 to 6am, Thursday 21 Dec

### When we will work

To minimise road disruption and for the safety of our team, the roadwork will be completed between **6pm and 6am** on Tuesday and Wednesday nights, while traffic volumes are lower.

### What work will be done?

Utility and road work will be completed near the intersection of Lawson and Little Eveleigh streets.

Our work will include:

- Installing new kerbs and pram ramps
- Installing signposts
- Resurfacing road surfaces
- Line marking.

Information on changes to local roads and the Little Eveleigh shared zone – which have been the subject of recent community consultation – will be provided soon.

### What does this mean for you?

While the work is underway, you may notice:

- Workers and vehicles
- Traffic controllers and signage
- Noise and vibration from machinery and equipment, such as grinders, jackhammers, power saws, rattle guns, rock hammers/breakers, rollers and vacuum trucks.

### Traffic and parking impacts

Either a single westbound or eastbound lane closure on Lawson Street will be in place, which may cause minor traffic delays.

Traffic control and signage will assist motorists, cyclists, and pedestrians.

Further details is outlined on the map overleaf.

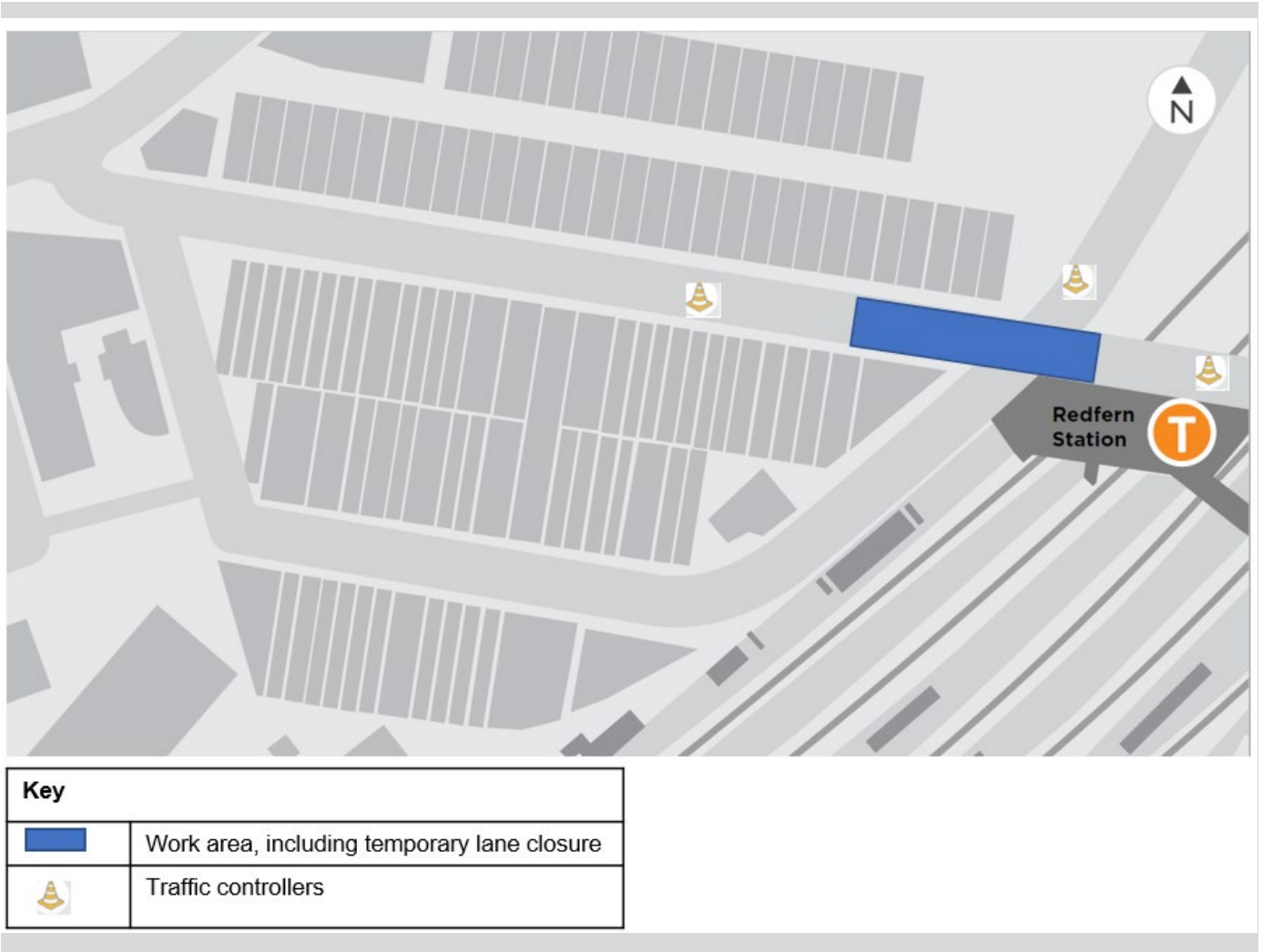
### Managing our impacts

We reduce noise and vibration by turning off machinery when not in use and, where possible, use noise absorbing blankets.

For more information about the project's noise and vibration management, please refer to the Construction Noise and Vibration Management Plan which can be viewed on the project webpage: [transport.nsw.gov.au/redfern](https://transport.nsw.gov.au/redfern).



## Work area and traffic impact map



If you have questions or feedback on out of hours work completed by the Redfern Station Upgrade project, please contact us via the details below.

### Contact us



Project Infoline **1800 684 490**  
24-hour Construction Response Line  
**1800 775 465**



**projects@transport.nsw.gov.au**



PO Box K659  
Haymarket, NSW 1240



Visit the online portal go to  
[www.transport.nsw.gov.au/redfern](http://www.transport.nsw.gov.au/redfern)



### Interpreter service

For languages other than English call 131 450  
Arabic • Cantonese • Hindi • Mandarin • Vietnamese  
لطلب خدمة الترجمة الشفهية للغات غير الإنجليزية اتصل بالرقم  
**131 450**

獲取英語以外的其他語言傳譯協助服務可以致電**131 450**  
अंग्रेज़ी के अतिरिक्त अन्य भाषाओं के लिए दुभाषिया सेवा **131 450**  
पर कॉल करें

获取英语以外的其他语言口译协助服务可以致电**131 450**

Để có dịch vụ thông ngôn cho các ngôn ngữ khác tiếng Anh,  
gọi số **131 450**