

Redfern Station Upgrade

New Southern Concourse

October 2023



Transport for NSW acknowledges the Gadigal people of the Eora Nation as the Traditional Custodians of the lands on which we work and pay respects to Elders past and present.

What's happening in October?

In October, we'll continue finishing works on the New Southern Concourse, new station entrances and shared zones in Little Eveleigh and Marian streets and related works on Lawson, Wilson and Ivy streets. Our work includes:

- Fit out, painting, finishing and defect work on lifts, stairs, bridges, platforms and buildings
- Testing and commissioning services
- Stair removals, demolition, platform resurfacing
- Installing platform tactiles
- Material removal and deliveries
- Electrical, stormwater and other utility work
- Excavating, backfilling and concreting
- Installing kerbs, drains, bollards and pavers
- Installing wayfinding signage
- Roadworks (subject to further approval)
- Landscaping including tree pruning and planting
- Investigative works.

When and where we'll work

Our standard construction hours are:
7am-6pm Monday to Friday, and 8am-6pm Saturday.

Some of our work will also take place outside standard hours - to coincide with Sydney Trains trackwork - when trains don't run and it's safe for our team to work on or near the tracks.

In October, we will work on the following weekends:

- **6pm Friday 6 to 6am Monday 9 October**
- **10pm Friday 13 to 6am Monday 16 October.**

The Platform 10 pedestrian access will also be closed during the above trackwork weekends.

Electrical work, testing and commissioning and painting may also occur up to three nights per week, however these activities are not expected to be noisy.

For the safety of road users, materials and equipment may also be delivered or removed outside standard construction hours during October.

What this might mean for you?

During October you may notice:

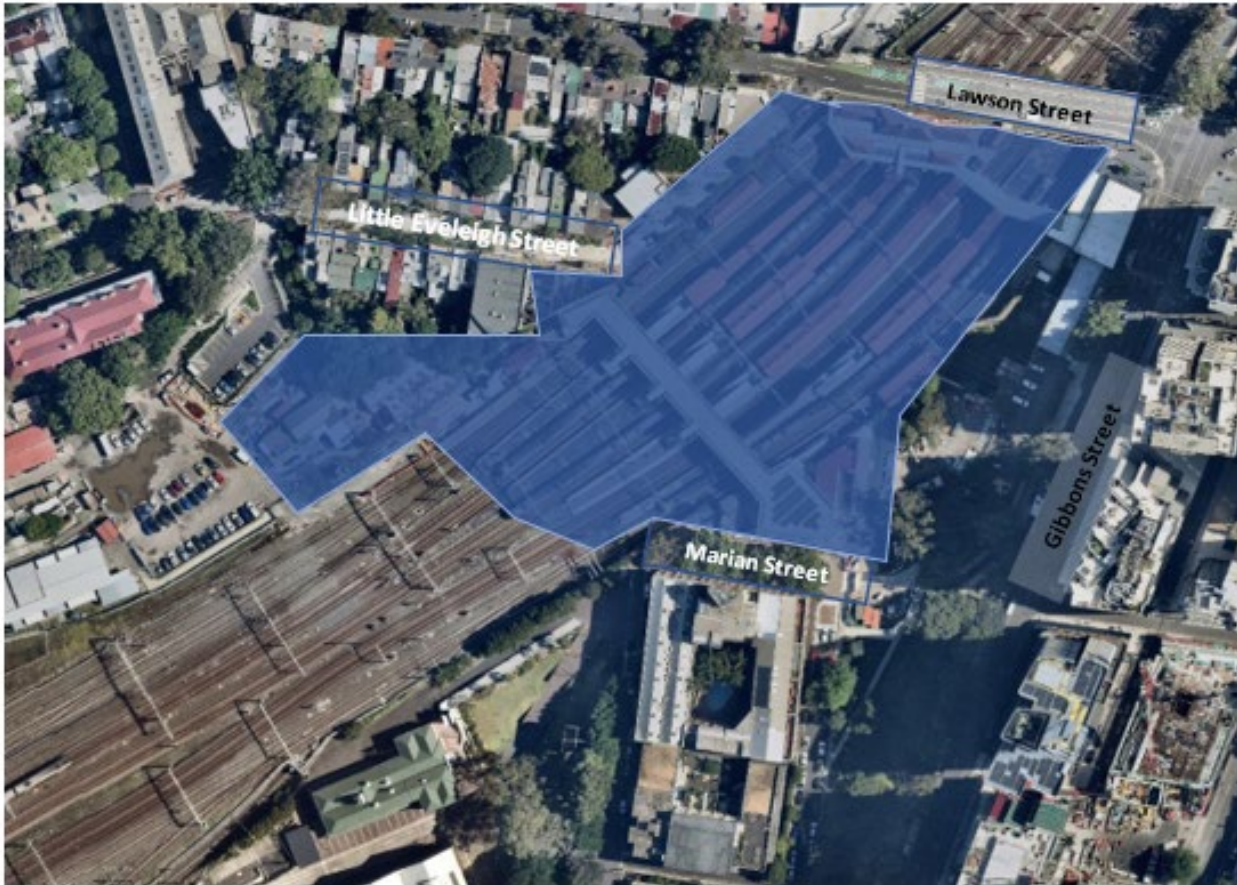
- Workers and vehicles
- Traffic controllers and signage
- Noise and vibration from machinery and equipment, such as grinders, jackhammers, power saws, rattle guns, rock hammers/breakers, rollers and vacuum trucks.

Managing our impacts

We reduce noise and vibration by turning machinery off when it's not in use and, where possible, using noise absorbing blankets. For more information about the project's noise and vibration management, please refer to the *Construction Noise and Vibration Management Plan* which is available on the project webpage: transport.nsw.gov.au/redfern.



Redfern Station Upgrade work area



Key	
Work area	

Nearby work

Two pedestrian crossings are being installed on Gibbons Street and Regent Street at Marian Street. This work is not part of the Redfern Station Upgrade project and is being completed by ConnectSydney. ConnectSydney can be contacted on **1800 735 563** or via email at info.harbour@connectsydney.com.au.

Contact us



Project Infoline **1800 684 490**
24-hour Construction Response Line
1800 775 465



projects@transport.nsw.gov.au



PO Box K659
Haymarket, NSW 1240



Visit the online portal go to
www.transport.nsw.gov.au/redfern



Interpreter service

For languages other than English call 131 450
Arabic • Cantonese • Hindi • Mandarin • Vietnamese
لطلب خدمة الترجمة الشفهية للغات غير الإنجليزية اتصل بالرقم
131 450

獲取英語以外的其他語言傳譯協助服務可以致電**131 450**
अंग्रेज़ी के अतिरिक्त अन्य भाषाओं के लिए दुभाषिया सेवा **131 450**
पर कॉल करें

获取英语以外的其他语言口译协助服务可以致电**131 450**

Để có dịch vụ thông ngôn cho các ngôn ngữ khác tiếng Anh,
gọi số **131 450**