

Sutherland to Cronulla Active Transport Link - Stage 2 East

Night work notification

July 2023



Transport for NSW acknowledges the Dharawal people as the Traditional Custodians of the lands on which we work and pay respects to Elders past and present.

Transport for NSW is delivering the Sutherland to Cronulla Active Transport Link (SCATL), a pedestrian and bicycle path linking Sutherland to Cronulla.

Stage 2 East construction is underway between Jackson Avenue, Miranda and Gannons Road, Caringbah.

What are we doing?

Transport for NSW will carry out night work from **8pm Monday 17 July and late September 2023, weather permitting** on the Kingsway between Kareena Road and Carramar Crescent, Caringbah.

To create a safe work area, we are required to work at night when there is less impact to traffic flow.

To minimise our impact for nearby residents, we will work up to **two nights a week**, with a maximum of **six nights per calendar month**.

Work at night includes the following activities:

- Site set up including temporary fencing installation, temporary lane closures
- Demolition of existing footpath
- Prepare foundations for new cycleway path
- Build new cycleway path.

The map overleaf shows the location of our work.

What will this mean for you?

We will be using a range of equipment including excavators, dump truck, concrete trucks and pumps, working trucks, vacuum trucks, mobile lighting towers, power tools and hand tools.

Our work schedule

Our night work hours are between **8pm and 5am, Sunday to Friday**.

Our normal construction work hours are between **7am and 6pm, Monday to Friday**.

There will be no work on public holidays.

Managing our impacts

We aim to manage our work to avoid impacts to the community and the environment.

This includes:

- Completing the noisiest work before midnight
- Turning off equipment when not in use and using non-tonal reversing beepers.

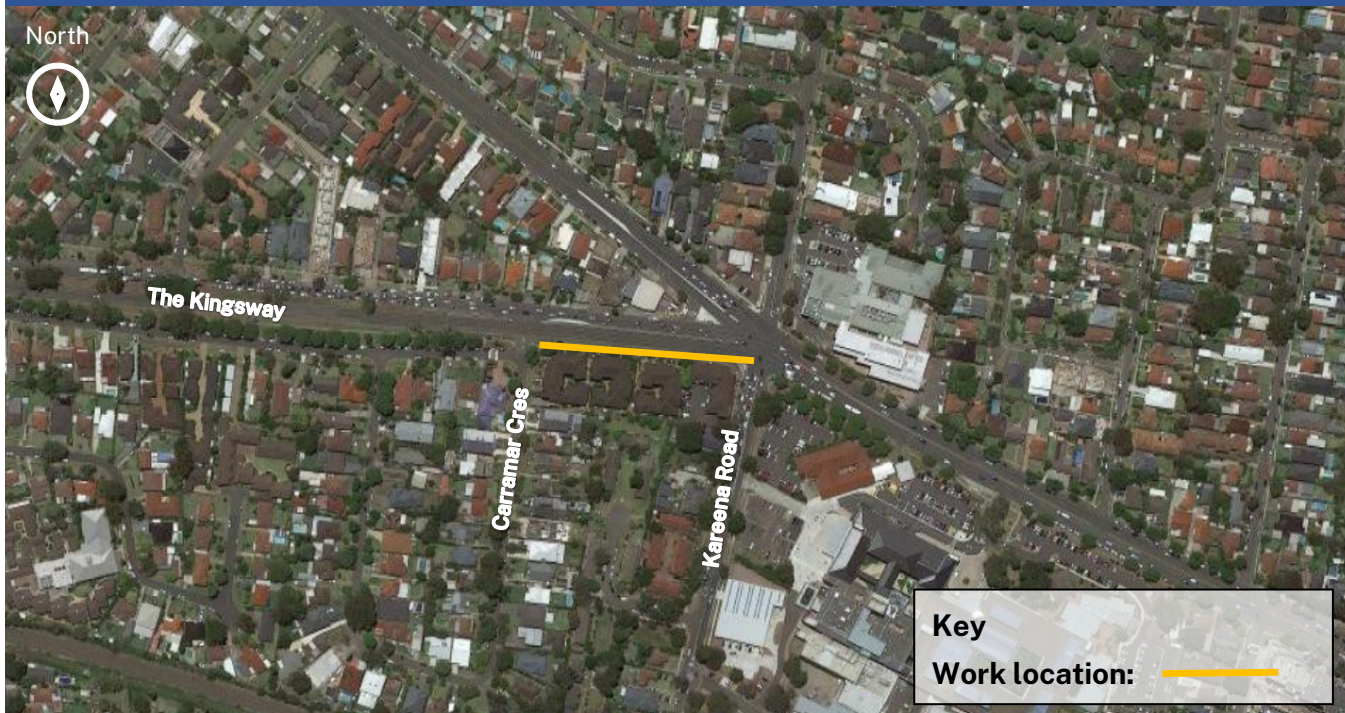
Traffic changes

Temporary traffic changes and lane closures will be in place to ensure the work zone is safe during night work.

Motorists are asked to take extra care, keep to displayed speed limits and observe traffic controls and signage when travelling through work areas.

For the latest traffic updates, you can call **132 701**, visit **livetraffic.com** or download the Live Traffic NSW App.

Work location on the Kingsway between Kareena Road and Carramar Crescent, Caringbah.



Contact us



Construction Response Line
1300 997 858



projects@transport.nsw.gov.au
community@sydneycivil.com



transport.nsw.gov.au/scatl



Interpreter service

For languages other than English call 131 450
Arabic • Cantonese • Hindi • Mandarin • Vietnamese

لطلب خدمة الترجمة الشفهية للغات غير الإنجليزية اتصل بالرقم
131 450

獲取英語以外的其他語言傳譯協助服務可以致電**131 450**

अंग्रेज़ी के अतिरिक्त अन्य भाषाओं के लिए दुभाषिया सेवा **131 450**
पर कॉल करें

获取英语以外的其他语言口译协助服务可以致电**131 450**

Để có dịch vụ thông ngôn cho các ngôn ngữ khác tiếng Anh,
gọi số **131 450**