

Nightwork in Medlow Bath for utility relocation and tree clearing

Medlow Bath Upgrade

September 2023



Australian Government



Transport for NSW pays respect to the Darug and Gundungurra people as the Traditional Custodians of the lands on which we work and pays respects to Elders past and present.

Transport for NSW is continuing work to prepare for the upgrade of the Great Western Highway at Medlow Bath.

What work are we doing?

Nightwork to carry out remaining tree clearing to enable widening of the highway, and installing utility services for communication, sewer, electrical, gas and water mains.

This includes:

- Completing remaining vegetation and tree clearing along both sides of the Great Western Highway, east of Bellevue Crescent to the limit of the work
- Saw cutting the pavement and driveways
- Installing utility cables and pipes
- Operating a vacuum truck
- Excavating and pavement work
- Installing temporary traffic barriers.

When and where we'll be working

Work will take place along the Great Western Highway, Railway Parade, near the traffic lights and on Station Street. We have included a map over the page showing the location of works.

In addition to our daytime work hours, which are from **7am to 6pm**, we'll be working up to three night shifts each week starting from **Monday 11 September**, weather permitting.

Nightwork hours will be between **6pm and 7am**.

We only work at night when necessary, and we will not work more than two consecutive night shifts.

We expect to finish tree clearing by Friday 29 September, weather permitting.

We expect to finish utility work by early 2024.

What will this mean for you?

Utility outages will be required at various locations during this work. An outage is when a service, such as power or water, is temporarily disconnected to carry out essential work.

A generator may be in place during outages to maintain power to impacted properties. Details will be provided to residents and businesses by each utility provider prior to the outage.

Residents may notice some noise from machinery equipment. There will also be traffic controllers, traffic barriers, equipment, lighting and signage in place during the works.

We will notify affected residents and stakeholders and discuss individual impacts before each period of nightwork commences.

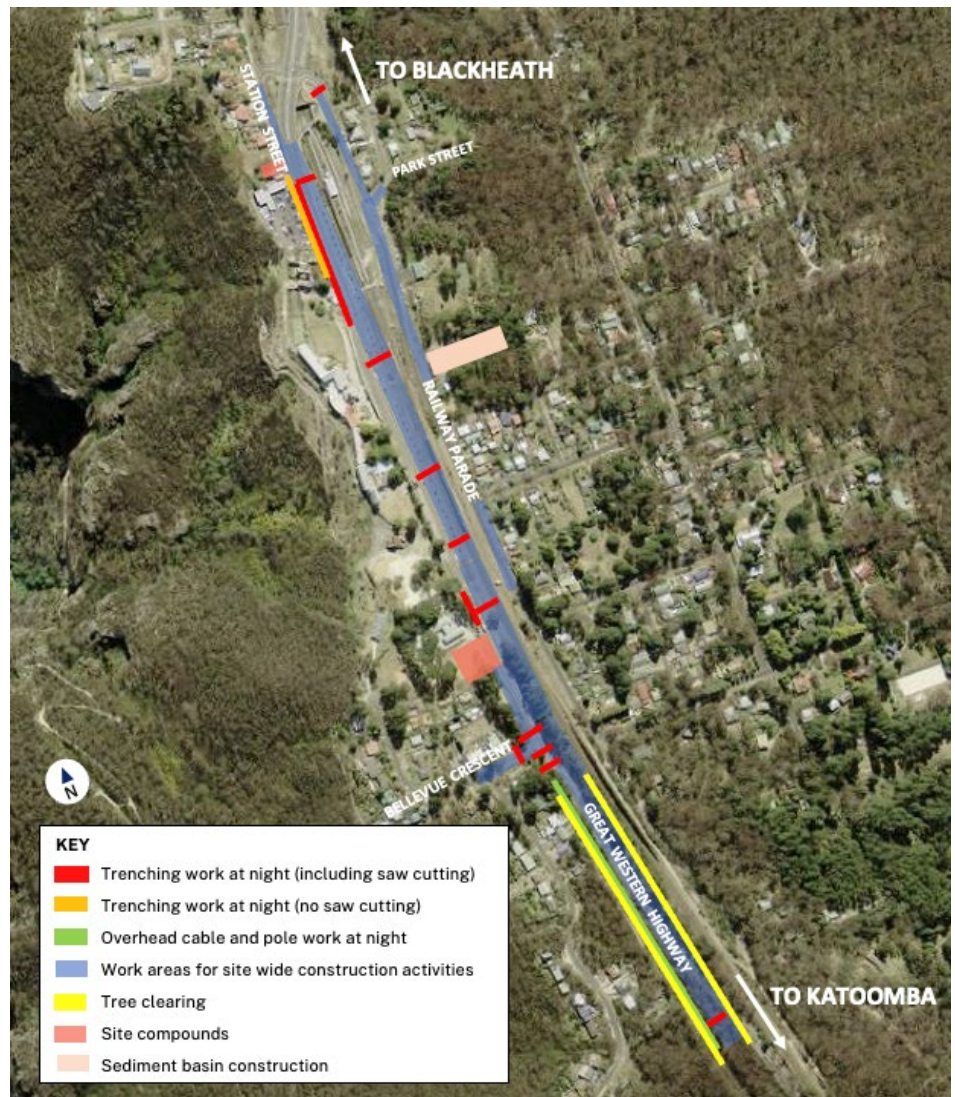


Managing our impacts

We manage our work to mitigate impacts to the community and the environment by:

- arranging work in stages and working at night to reduce traffic impacts
- installing noise blankets around our work areas where we can, to reduce noise
- turning off machinery when not in use
- mulching cleared trees during daylight hours.
- grouping utility installation together to reduce repeat trenching work
- using generators to maintain power during outages
- maintaining pedestrian access

Location of work area



Traffic Changes

A reduced speed limit of 40 km/hr, stop/slow operations and traffic controllers will be in place in some locations.

All road users are advised to follow the directions of signs and traffic control and slow down on approach.

For the latest traffic updates, call 132 701, visit livetraffic.com or download the Live Traffic NSW App.

We understand that this work will generate some inconvenience and we thank you for your patience.

If there is any way we can support you during the work, please let us know directly so we can help.

Contact us



Project Infoline **1800 953 777**
24-hour Construction Response Line
1800 953 777, press 'option 1'



gwhmedlow@abergeldie.com



gwh@transport.nsw.gov.au



PO Box 334 Parkes, NSW 2870

Visit the online portal go to
nswroads.work/gwhmedlow



Interpreter service

For languages other than English call 131 450
Arabic • Cantonese • Hindi • Mandarin • Vietnamese

لطلب خدمة الترجمة الشفهية للغات غير الإنجليزية اتصل بالرقم
131 450

獲取英語以外的其他語言傳譯協助服務可以致電**131 450**
अंग्रेज़ी के अतिरिक्त अन्य भाषाओं के लिए दुभाषिया सेवा **131 450**
पर कॉल करें

获取英语以外的其他语言口译协助服务可以致电**131 450**

Để có dịch vụ thông ngôn cho các ngôn ngữ khác tiếng Anh,
gọi số **131 450**