

We are moving in

At the end of last year, we advised you of our plans to reserve up to 27 commuter car spaces opposite Shellharbour Junction Station for a site compound. After further investigations, and to minimise impacts on commuters, we have decided to move our site compound approximately 100 metres north, away from the station entry (indicated in image overleaf).

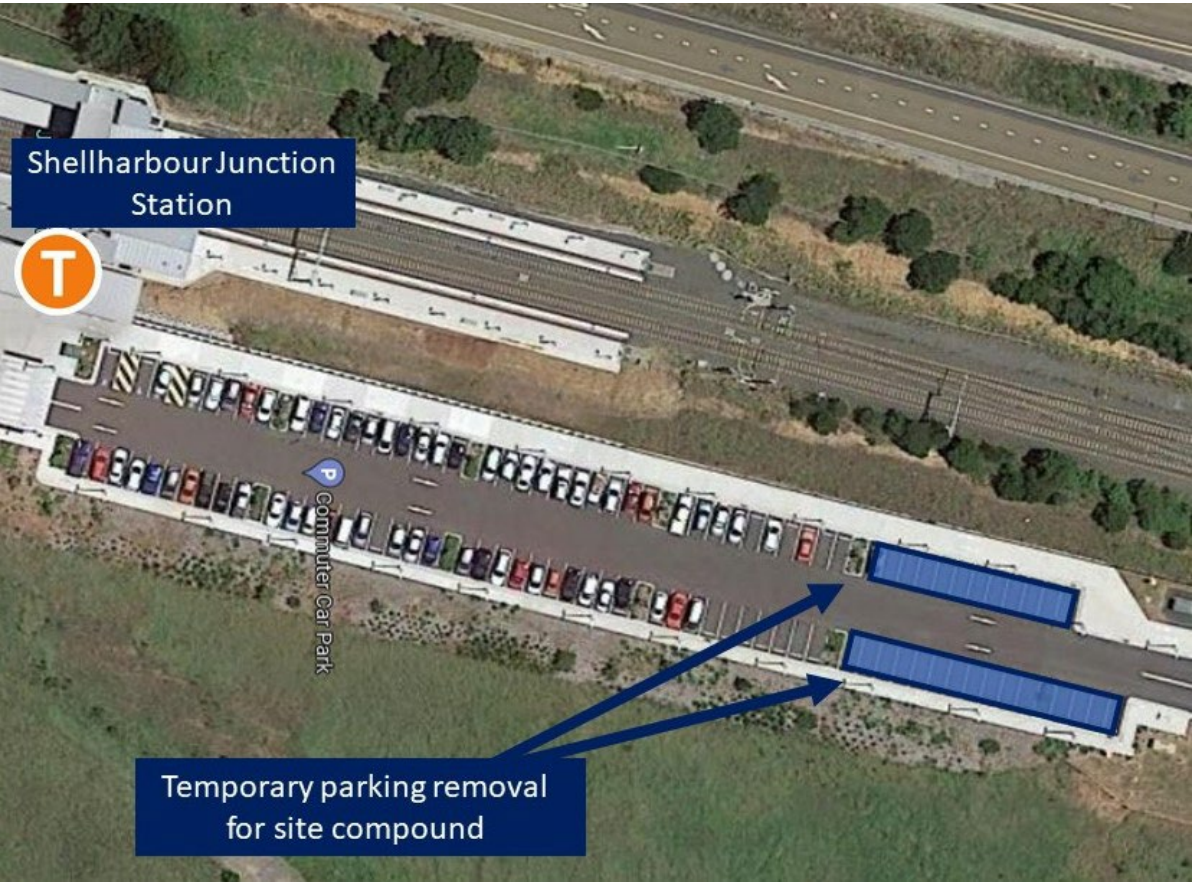
We will require the space for:

- office sheds
- storage containers
- laydown of equipment and machinery
- a staff amenities block
- construction vehicle parking
- portable water access and operation of a generator

We will temporarily reserve these commuter car spaces for a period of approximately 12 months to facilitate the safe construction of upgrade work at Shellharbour Junction Station.

The compound will be operational during standard construction hours (7am-6pm). We will contact you in advance on any occasion where we plan to operate this compound outside of standard construction hours.

For improved safety, visual amenity, and dust containment, this area will be delineated with shade cloth. The shade cloth will be printed with the project contact details to enable members of the community to contact the project team in relation to our activities at this location.



Shellharbour Junction
Station



P
Commuter Car Park

Temporary parking removal
for site compound