

Sutherland to Cronulla Active Transport Link - Stage 2 East

Community notification | March/April 2023

The Sutherland to Cronulla Active Transport Link (SCATL) is a pedestrian and bicycle path linking Sutherland to Cronulla.

Stage 2 East continuing

During **March** and **April** the following activities will take place along the Kingsway between Miranda Avenue and Carramar Crescent, Miranda including:

- Set up of temporary work area with fencing and barriers (adjacent to Malvern Road reserve) will continue
- Installation of tree protection fencing
- Removal of up to three trees from Malvern Road reserve, subject to arborist assessment of roots and overhanging branches. The three trees are approved for removal and detailed in Review of Environmental Factors
- Temporary parking removal (in sections) along Malvern Road reserve (including boats and trailers)
- Signage and line marking changes
- Clearance of vegetation like turf and shrubs
- Installation of erosion and sediment controls
- Start excavation and construction of cycleway.

Equipment to be used includes excavators, dump trucks, concrete trucks and pumps, working trucks, mulcher, vacuum trucks, delivery trucks, power tools and hand tools.

Construction hours

The above work will commence **7am** on **Monday 27 March**. Standard construction hours are from **7am to 6pm Monday to Friday**, excluding public holidays. We will

notify nearby residents and businesses in advance if we need to work outside these days and times.

Temporary parking removal

There will be temporary removal of on-street parking (including boats and trailers) in sections, only when required during the project. We will return on-street parking to the community as soon as we can.

Tree removal

Following community feedback on the Review of Environmental Factors, the design was refined to reduce the number of trees impacted. We are now undertaking the pre-construction detailed tree assessment during March and April to see if this can be reduced further. **More information will be provided to the community as it becomes available.**

Following this assessment, landscaping plans will be prepared which confirm replanting locations and fast-growing native tree species. The project team are replanting four trees and large shrubs for each tree removed (4 to 1 ratio).

During construction, when a tree is required to be removed an arborist will be on site to confirm if tree roots or overhanging branches impact active transport success. An ecologist will be on site to confirm wildlife is not present before tree removal.

Temporary traffic changes

From time to time, we will implement reduced speed zones, temporary single lane road closures, temporary footpath closures and/or additional parking removal to create a safe working area and accommodate large vehicles

carrying out construction work. We may also temporarily close a bus stop from time to time.

Traffic control and signage will be in place to assist motorists, cyclists and pedestrians with all changes.

Future temporary driveway closures

As part of our construction work, there will be temporary changes to driveway access. We will be rolling out both a business and resident survey in the coming months to understand the best days and times of the week to

temporarily close a driveway or footpath to enable safe construction work.

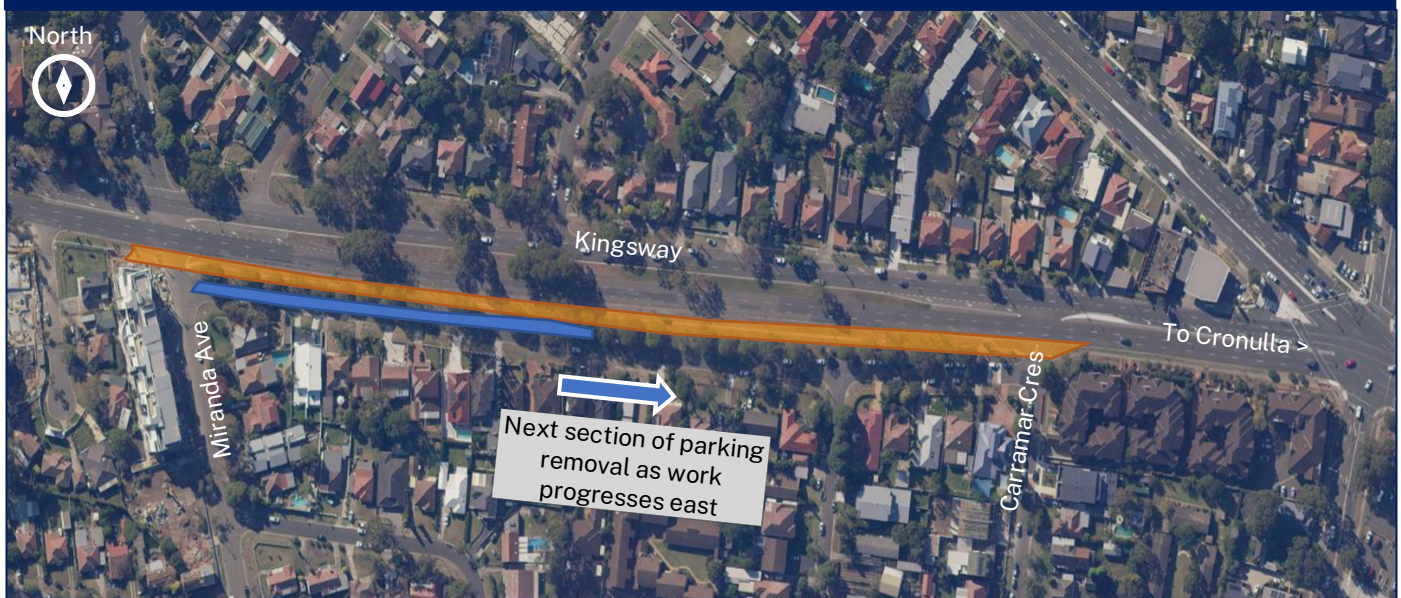
How will the work affect you?

Our work may be noisy at times. We will work with nearby residents and provide notification ahead of work in the area and do everything we can to minimise our impact.

Subscribe to project emails

Send an email to us at community@sydneycivil.com to subscribe.

Temporary construction area (Kingsway between Miranda Avenue and Carramar Crescent, Miranda)



Legend



Early works construction area – Kingsway active transport link

Temporary parking removal (in sections, as work progresses)

Contact us

If you have any questions or would like more information, please contact our project team:

1300 997 858 (including urgent requests and construction related issues 24 hours a day)

community@sydneycivil.com
nswroads.work/scatl



Translating and interpreting service

If you need help understanding this information, please contact the Translating and Interpreting Service on **131 450** and ask them to call us on **1300 997 858**.

We acknowledge the Traditional Custodians of this land, the Dharawal people, and pay our respect to Elders past and present.