

Drainage upgrade work at Eveleigh

More Trains, More Services

July and August 2023



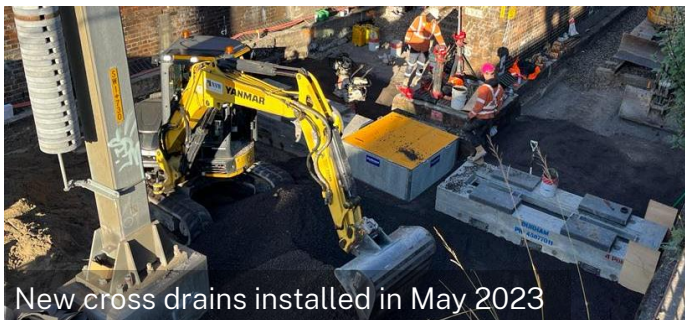
Transport for NSW acknowledges the Gadigal people of the Eora Nation as the Traditional Custodians of the lands on which we work and pay respects to Elders past and present.

We are upgrading the rail infrastructure between Sydney Terminal and Erskineville Junction to support the introduction of the new fleet of trains operating on the South Coast Line. This includes upgrading the drainage system within the rail corridor at Eveleigh to prevent future flooding and improve reliability across the network.

What work are we doing?

Drainage pipe installation

Progress is being made and we have recently installed several new cross drains inside the rail corridor. Once these drains become operational, they will divert water into the drainage system and towards the new pump station.



New cross drains installed in May 2023

In the coming months we plan to install another 90 metres worth of drainage pipes. The work will involve removing sections of track, installing new drainage pipes and reinstating the track.

We will utilise the site compounds shown on the map overleaf for deliveries, storage of materials and equipment, and worker parking.

We estimate that the remaining work will take up to another six weekends to complete, with three weekends of work planned in July and August 2023.

Pump station construction

Work to construct a pump station at the Eveleigh Maintenance Centre (EMC) will continue during standard construction hours in July and August.

When we'll be working

Standard construction hours are **7am to 6pm Monday to Friday and 8am to 1pm on Saturdays.**

For safety reasons, some of the work will take place during scheduled Sydney Trains trackwork periods when no trains are running:

- 10pm Friday 14 July to 2am Monday 17 July
- 10pm Friday 28 July to 2am Monday 31 July
- 10pm Friday 4 August to 2am Monday 7 August.

We are going paperless

We are committed to reducing our paper usage and environmental impacts.

Soon we will no longer be distributing paper notifications to residents (unless requested). Instead, we will contact you via email when there is construction work that may impact you.



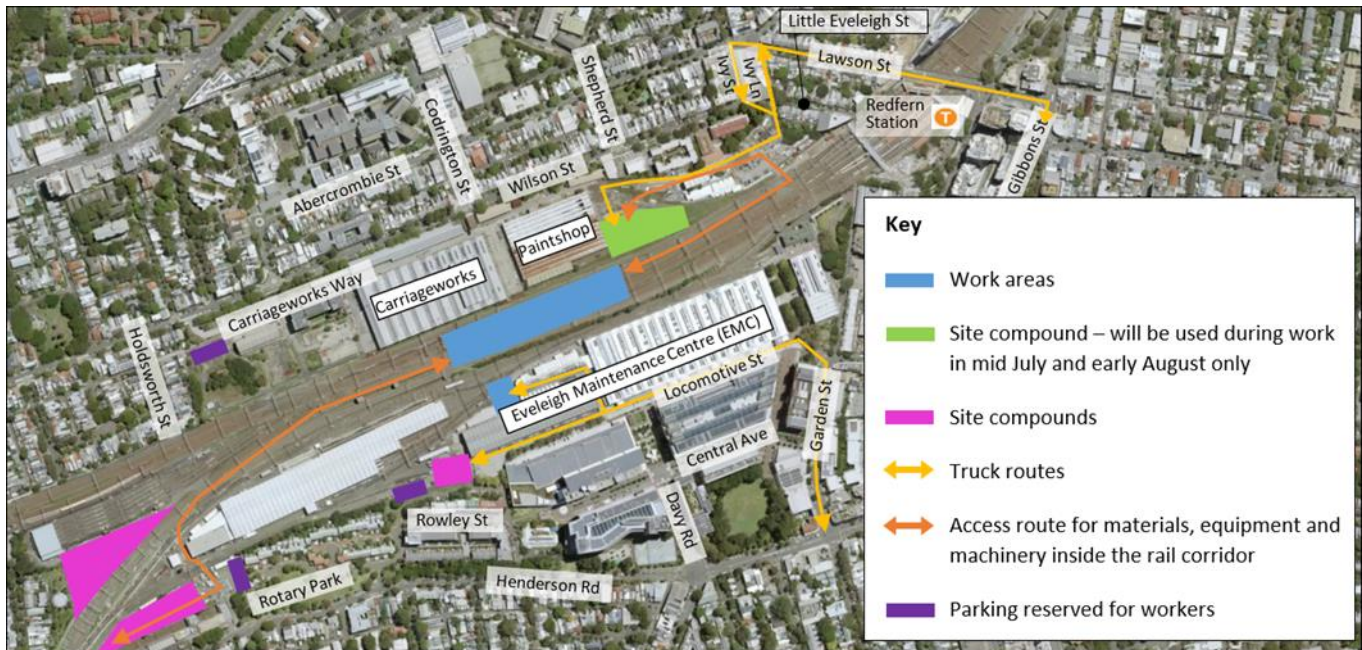
If you haven't already, please scan the QR code and fill out the form to register for email updates.

If you do not register for updates, you may miss out on important updates and information about potential inconveniences caused by our construction work.

If you wish to continue to receive paper notifications, you can request this via the QR code or call us at 1800 684 490.



Location of work



What will this mean for you?

You may notice:

- workers and vehicles
- lighting from temporary lighting towers
- noise from machinery and equipment.

Deliveries

As part of the upcoming work there will be deliveries of equipment, machinery and materials. The truck routes to and from our work areas are shown on the map above.

The majority of deliveries will be scheduled during the day, however some deliveries will be required to take place during the trackwork periods outlined on Page 1.

Managing our impacts

We understand construction activities may cause disruption for the community. We'll seek to minimise impacts as much as possible and adhere to strict environmental conditions relating to noise, vibration and dust management.

Other work in your area

There are multiple transport projects and contractors working within the rail corridor and site compounds shown on the map above.

- **Sydney Trains:** 1300 656 999 or www.transport.nsw.gov.au/sydneytraincommunity
- **Redfern Station Upgrade:** 1800 684 490 or www.transport.nsw.gov.au/projects/current-projects/redfern-station-upgrade-new-southern-concourse.

Contact us



Project Infoline **1800 684 490**
24-hour Construction Response Line
1800 775 465



projects@transport.nsw.gov.au



yoursay.transport.nsw.gov.au/mtms



Register for email updates



Interpreter service

For languages other than English call 131 450
Arabic • Cantonese • Hindi • Mandarin • Vietnamese

لطلب خدمة الترجمة الشفهية للغات غير الإنجليزية اتصل بالرقم
131 450

獲取英語以外的其他語言傳譯協助服務可以致電**131 450**

अंग्रेजी के अतिरिक्त अन्य भाषाओं के लिए दुभाषिया सेवा **131 450**
पर कॉल करें

获取英语以外的其他语言口译协助服务可以致电**131 450**

Để có dịch vụ thông ngôn cho các ngôn ngữ khác tiếng Anh,
gọi số **131 450**



Subscribe for updates via the QR code

https://www.transport.nsw.gov.au/privacy-statement#Your_Privacy