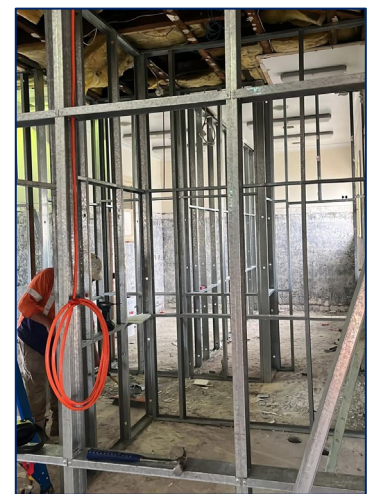


# Transport Access Program

## Taree Station Upgrade Construction update March 2023

Transport for NSW are continuing to lead upgrades to Taree Station.



*Works continue at Taree Station*

### Out of hours work in March

For the safety of workers, motorists and commuters, some of our construction activities are required to be carried out outside of our standard work hours.

We are planning to work from 6am Saturday 18 to 7pm Sunday 19 March, with works including:

- saw cutting on the platform
- changing the slope of the platform at the coach ramp and breezeway entry points to the station
- upgrading the electrical distribution board.

Schedules are subject to change due to permits, weather, and site conditions. Please register for email updates so that we can keep you updated about our work. Refer to the contact details on the last page.

These out of hours works will also impact train services, which will be replaced by road coaches. Visit the [Taree Station webpage](#) for detailed information on changes to services.

## Work during standard construction hours

Standard construction hours are from 7am to 6pm Monday to Friday and 8am to 1pm Saturdays, excluding public holidays. We will continue to notify nearby residents and businesses in advance if we need to work outside these times.

Over the next month the following works are also scheduled to occur:

- refurbishing the existing waiting room, toilets and ticket office
- building a new family accessible toilet
- improving drainage on Olympia and Cornwall streets
- completing the upgrade to the car park
- completing accessibility improvements to the main station entrance.

## Completed works

To date the following has been achieved:

- coach bay accessible ramp and stairs
- bulk earthworks for the new rigid pavement
- demolition of the main station entrance stairs, accessible ramp and suspended slabs.

## What to expect

- **Temporary restrictions to traffic movements:** vehicles will only be able to travel one way into Olympia Street from Cornwall Street as drainage work through March and asphalt works through April are carried out. Closure will be during work hours only and managed by traffic control.
- **Temporary parking restrictions:** 10 temporary parking spaces have been setup along Olympia Street. The permanent spaces will re-open in stages as work is completed.
- **Temporary relocation of station facilities:** the ticket office has been temporarily relocated to the western building, with temporary amenities available at the western side of the station building.
- **Increase in construction traffic:** vehicles will be accessing the rail corridor via the construction gate at the eastern end.
- **Temporary change to platform access:** access will be available from the Sydney end of the platform or the car park near Marathon Street.
- **Intermittent periods of high noise:** equipment used will include generators, trucks, gurney, circular saw, jack hammers, crane, compactor, excavators, and various hand and power tools. Measures to reduce noise will be implemented including turning equipment off when not in use, positioning equipment as far away from properties as possible, using non-tonal reversing beepers, and stopping work for respite periods.

## Work location – Taree Station



## Keep in touch

We are committed to keeping the community informed throughout the delivery of the project. You can stay informed via regular updates to the project website at [transport.nsw.gov.au/taree](https://transport.nsw.gov.au/taree). We will also keep the local community informed via project updates, email and signage. If you would like to be added to the project distribution list, or for more information on the Taree Station Upgrade, please contact us on 1800 684 490 or email [projects@transport.nsw.gov.au](mailto:projects@transport.nsw.gov.au). Thank you for your patience and cooperation while this upgrade is being completed.

## Translating and interpreting service

If you need help understanding this information, please contact the Translating and Interpreting Service on 131 450 and ask them to call us on 1800 684 490.

