

Community Notification

Tuggerah Station Upgrade

November 2023



Transport for NSW acknowledges the Darkinjung people as the Traditional Custodians of the lands on which we work and pay respects to Elders past and present.

The NSW Government is improving accessibility at Tuggerah Station

Transport for NSW is upgrading Tuggerah Station. The upgrade will provide a train station that is accessible to those with a disability or limited mobility, parents/carers with prams and customers with luggage.

What we are doing in November?

Work includes:

- general construction works, including delivery and removal of plant and materials
- surveying and site investigations
- adjustments to hoardings and fencing to facilitate construction works
- removal of trees and vegetation to enable works
- continuation of piling work
- formwork, reinforcement and concrete pours
- crane movements to help with construction work
- earthwork activities including waste classification and removal of waste materials
- alteration of platform canopies on Platform 1 and 2 where the new entrance stairs will be
- trenching within the carpark for utility relocation and installation
- relocation of lights, cameras and signs on both platforms

Drivers will continue to see construction vehicle movements and traffic control set-up on the Pacific Highway and Anzac Road.

During November, there will be continued temporary changes to car parking arrangements at Tuggerah Station, to allow for utility relocation. Signage will be in place with further details.

When we'll be working

Standard construction hours are **7am to 6pm Monday to Friday** and **8am to 1pm Saturday**. We will notify nearby residents and businesses in advance if we need to work outside these times.

Managing our impacts

There may be some occasional, minor disruptions to pedestrians, but platforms and footbridge access will remain open as the station operates normally.

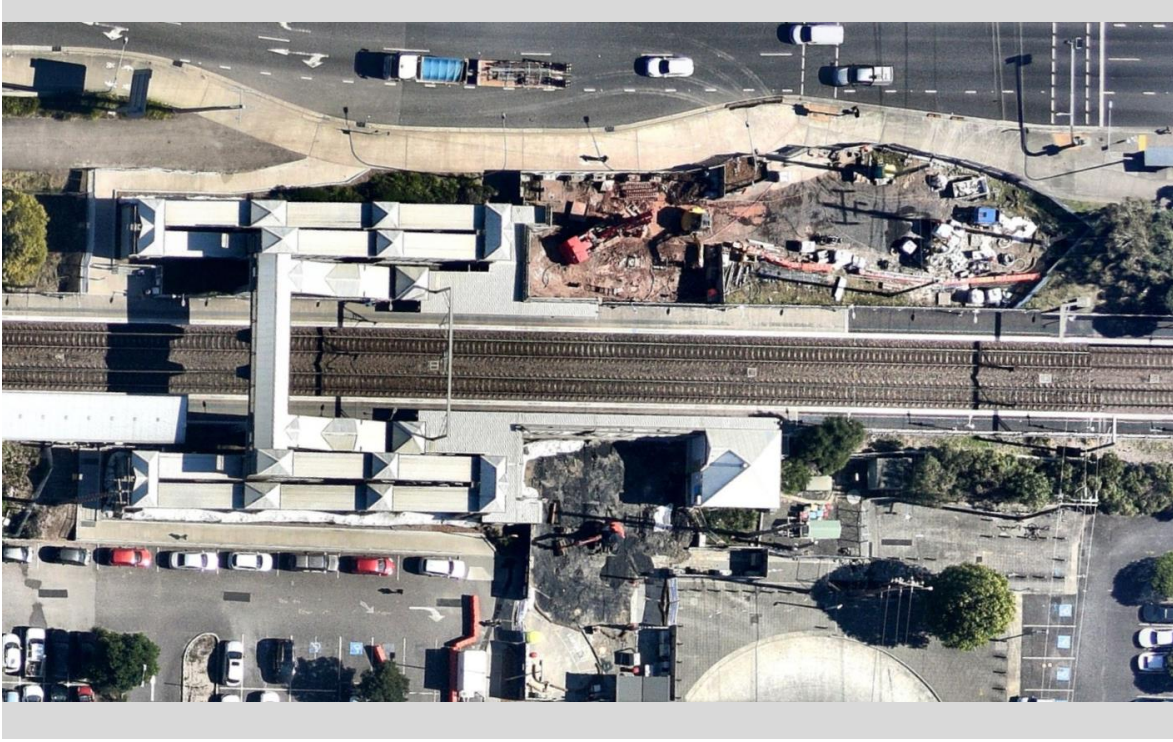
A traffic control team will be available to assist with any construction impacting pedestrian movement.

This work may be noisy, however we aim to avoid impacts to the community and the environment where possible by:

- fencing off areas for the safety of commuters
- using noise blankets and turning off machinery and equipment when not in use.

Thank you for your patience as we carry out this important work.





Aerial photo of the site showing piling works occurring on platform 2.

Contact us



Project Infoline **1800 775 465**



projects@transport.nsw.gov.au



transport.nsw.gov.au/projects/current-projects/tuggerah-station-upgrade



Interpreter service

For languages other than English call 131 450
Arabic • Greek • Hindi • Mandarin • Vietnamese

لطلب خدمة الترجمة الشفهية للغات غير الإنجليزية اتصل
بالرقم **131 450**

Για υπηρεσίες διερμηνείας σε άλλες γλώσσες εκτός από
τα Αγγλικά καλέστε το **131 450**

अंग्रेज़ी के अतिरिक्त अन्य भाषाओं के लिए दुभाषिया सेवा
131 450 पर कॉल करें

获取英语以外的其他语言口译协助服务可以致电**131 450**

Để có dịch vụ thông ngôn cho các ngôn ngữ khác tiếng
Anh, gọi số **131 450**

www.transport.nsw.gov.au/privacy-statement#Your_Privacy



To subscribe to the email distribution list for this project, please contact projects@transport.nsw.gov.au

Page 2 of 2