

Community Notification

Tuggerah Station Upgrade

October 2023



Transport for NSW acknowledges the Darkinjung people as the Traditional Custodians of the lands on which we work and pay respects to Elders past and present.

The NSW Government is improving accessibility at Tuggerah Station

Transport for NSW is upgrading Tuggerah Station. The upgrade will provide a train station that is accessible to those with a disability or limited mobility, parents/carers with prams and customers with luggage.

What we are doing in October?

Work includes:

- continuation of piling work
- earthwork activities including removal of waste materials
- demolition of existing concrete ramps and platform canopies to make room for new entrance stairs on Platforms 1 and 2
- formwork and reinforcement for substructure elements including pile cap, lift shafts, footbridge abutments and stair columns.
- concrete pumping and pouring
- crane movements to assist with construction
- platform drainage installation
- removal of power pole within the Bryant Drive carpark and trenching within the carpark for utility relocation
- relocation of lights, cameras and signs on both platforms to help with ongoing construction works.

Drivers will continue to see construction vehicle movement and traffic control set-up on the Pacific Highway and Anzac Road.

During October, there will be continued temporary changes to car parking arrangements to allow for utility relocation. Signage will be in [place with further details.](#)



To subscribe to the email distribution list for this project, please contact projects@transport.nsw.gov.au

When we'll be working

Standard construction hours are **7am to 6pm Monday to Friday** and **8am to 1pm Saturday**. We will notify nearby residents and businesses in advance if we need to work outside these times.

Out of hours

As the Koori Knockout event will be held in Tuggerah on the long weekend, project impacts have been reduced in the Bryant Drive commuter carpark.

From **4am Saturday 28 October** until **7am Monday 30 October**, utility relocation works will continue in the Bryant Drive commuter carpark. We will also be taking down some parts of the canopies on Platform 1 and Platform 2 to make way for new stairs.

To help with this task, more large machines will be moving around the carpark, and certain areas will be fenced off to keep commuters safe.

Managing our impacts

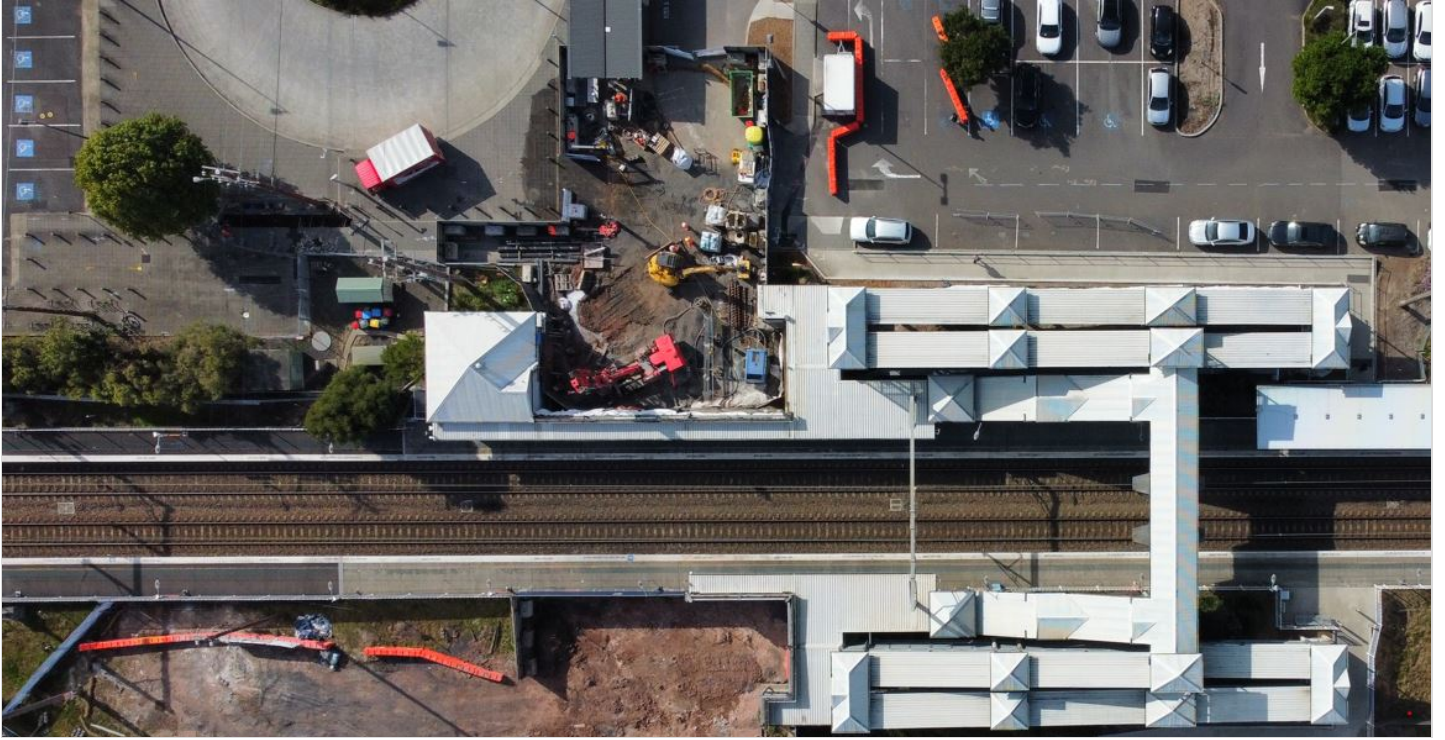
There may be some occasional, minor disruptions to pedestrians, but platforms and footbridge access will remain open all weekend as the station operates normally.

A traffic control team will be available to assist with any construction impacting pedestrian movement.

This work may be noisy, however we aim to avoid impacts to the community and the environment where possible by:

- fencing off areas for the safety of commuters
- using noise blankets and turning off machinery and equipment when not in use.

Thank you for your patience as we carry out this important work.



Progress of micropiling works next to platform 1

What is micropiling?

Micropiling is a construction method where small, sturdy columns or piles are inserted into the ground. These tiny piles help support heavy structures like buildings, bridges or new parts of the train station. They're like strong, underground pillars that ensure everything stays safe and stable during the upgrade of the station.

Contact us



Project Infoline **1800 775 465**



projects@transport.nsw.gov.au



transport.nsw.gov.au/projects/current-projects/tuggerah-station-upgrade



Interpreter service

For languages other than English call 131 450
Arabic • Greek • Hindi • Mandarin • Vietnamese

طلب خدمة الترجمة الشفهية للغات غير الإنجليزية اتصل
بالرقم **131 450**

Για υπηρεσίες διερμηνείας σε άλλες γλώσσες εκτός από
τα Αγγλικά καλέστε το **131 450**

अंग्रेज़ी के अतिरिक्त अन्य भाषाओं के लिए दुभाषिया सेवा
131 450 पर कॉल करें

获取英语以外的其他语言口译协助服务可以致电**131 450**

Để có dịch vụ thông ngôn cho các ngôn ngữ khác tiếng
Anh, gọi số **131 450**

www.transport.nsw.gov.au/privacy-statement#Your_Privacy



To subscribe to the email distribution list for this project, please contact projects@transport.nsw.gov.au