

M4 Roper Road westbound on ramp

Open to traffic

April 2023



M4 Roper Road westbound on ramp nearing completion

Transport for NSW has been working on building a new west facing ramp between the M4, Erskine Park Road and Roper Road. The newly constructed M4 Roper Road westbound on ramp means road users travelling north from St Clair can now use the westbound on ramp, instead of driving through residential streets to join the motorway.

Work on the M4 Roper Road westbound on ramp project started in August 2021. The ramp is now open to traffic with minor landscaping and asphaltting work to be carried out in the coming months.

While Transport worked day and night shifts to complete construction, we thank the community, road users and local residents for their patience and understanding during the delivery of this project.

Project facts



2300m³
of concrete used across
the entire project



8000m³
of topsoil reused and
3000m³ sent offsite



Trees
along the northbound side of
Erskine Park Road maintained



Replanted
endangered species
of Grevilleas



36
subcontractors engaged to
construct the new M4 Roper
Road westbound on ramp



~395
day shifts and 183 night shifts
worked to date

Project outcomes

- Constructed new cantilever retaining wall to support the road level transition from Roper Road to the new M4 Roper Road westbound on ramp
- Widened Erskine Park Road to build a right turn lane to allow northbound traffic access to the new M4 Roper Road westbound on ramp
- Successfully carried out a 56 hour closure of the M4 Roper Road westbound off ramp and completed works three hours ahead of reopening
- Excavated and built asphalt layers for the new westbound on ramp
- Upgraded the Erskine Park Road and M4 Roper Road eastbound on ramp intersection with new traffic signals
- Installed guardrails, electrical services, safety barriers and smart motorway infrastructure along the new M4 Roper Road westbound on ramp
- Relocated utilities and installed new drainage along Erskine Park Road
- Installed new signage along Erskine Park Road northbound, Shepherd Street and the M4 Motorway westbound shoulder.



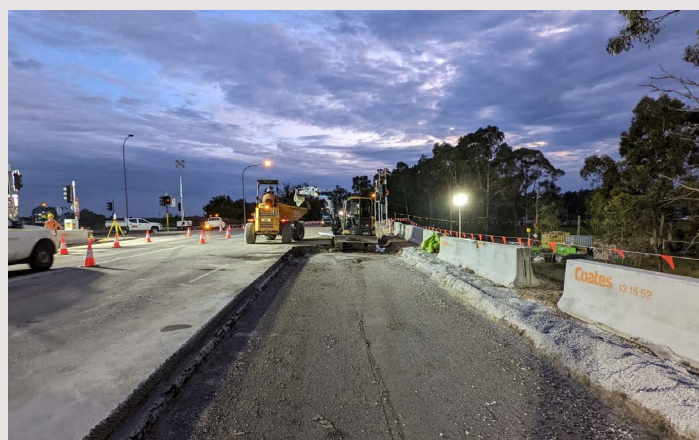
M4 Roper Road westbound on ramp now open to traffic

Did you know?

The new M4 Roper Road westbound on ramp was designed as a G-loop to reduce impacts on identified threatened ecological communities.



First layer of asphalt on the new on ramp

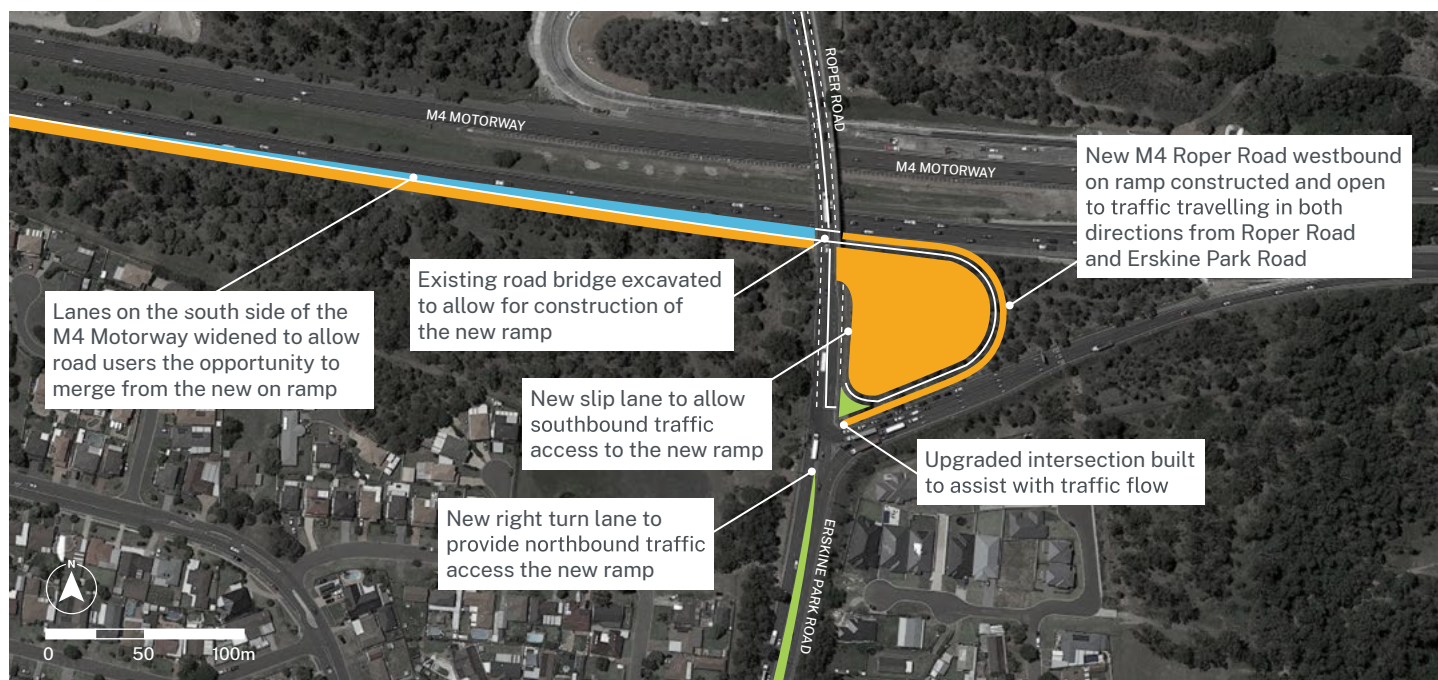


Work on Erskine Park Road as part of the 56 hour closure weekend



Construction of the abutment under the existing bridge

Map of new M4 Roper Road westbound on ramp



KEY

 Road widening

 New median

 Vegetation removal

Upcoming work

Over the next couple of months, we will work to:

- complete landscaping in work areas
- remove our site sheds
- remove the access tracks and flagging
- carry out reinstatement work
- complete line marking, install barriers and kerbing.

How will our work affect you?

Equipment used may include road saw, vac truck, excavator, pilling rig, roller, trucks, profiler, asphalt machine, light vehicles, and lighting towers.

Traffic changes

The speed restriction currently in place at Erskine Park Road/Roper Road is now removed. Temporary lane closures and changes to traffic conditions will still be in place as we work. VMS signage will notify road users along the motorway and roadways.

Please keep to speed limits and follow the direction of traffic controllers and signs. For the latest traffic updates, contact **132 701**, visit livetraffic.com or download the Live Traffic NSW App.



Earthworks for the new M4 Roper Road on ramp



Fresh asphalt laid on Erskine Park Road

For more information or enquiries



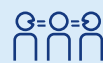
nswroads.work/m4roperwramp



1800 842 103



M4roperroad.community@georgiou.com.au



If you need help understanding this information, please contact the Translating and Interpreting Service on **131 450** and ask them to call us on **1800 842 103**



Visit the online portal to subscribe for updates