

Waitara Station Upgrade

Transport Access Program

November 2023



Transport for NSW acknowledges the people of the Darug and Guringai Nations as the Traditional Custodians of the lands on which we work and pay respects to Elders past and present.

Transport for NSW is upgrading Waitara Station as part of the Transport Access Program to make it easier for everyone to access, including people with a disability or limited mobility, parents/carers with prams and customers with luggage.

What work are we doing?

Work planned for November includes:

- line marking and finishing work at the new Alexandria Parade pedestrian crossing
- architectural finishes within the new underpass and staircases including completing the installation of the new curved ceiling (pictured over the page)
- electrical and security system upgrade work within the new underpass, new stairs and around the station precinct and on the newly installed platform canopy. Work includes fitting new lights and CCTV security cameras
- commissioning the lift shafts
- work on the existing commuter car park and extension including installing drainage, kerbs, finished footpath and landscaping.

When will we be working?

Working hours are **7am to 6pm, Monday to Friday and 8am to 1pm, Saturday**. We will notify nearby residents and businesses in advance if we need to work outside these times.

What will this mean for you?

We will be using a range of equipment including mobile cranes, forklifts, excavators, concrete trucks and pumps, elevated work platforms,

vacuum trucks, delivery trucks, power tools and hand tools.

Night work – 27 to 30 November

Night work will be carried out from **12am to 6am Monday 27 November to Thursday 30 November**. **Trains are not operating at these times and the station will be closed**. Our night work will involve loading materials and equipment on and off the platform. Equipment for this night work includes a small mobile crane, pallet trolleys, a small excavator, mobile lighting, power and hand tools.

Managing our impact

We aim to manage our work to avoid impact to the community and the environment. This includes:

- having traffic control and signage in place
- fencing for safety and security
- reducing our noise as much as possible by turning off equipment when not in use and using non-tonal reversing beepers.

Changes to car park configuration

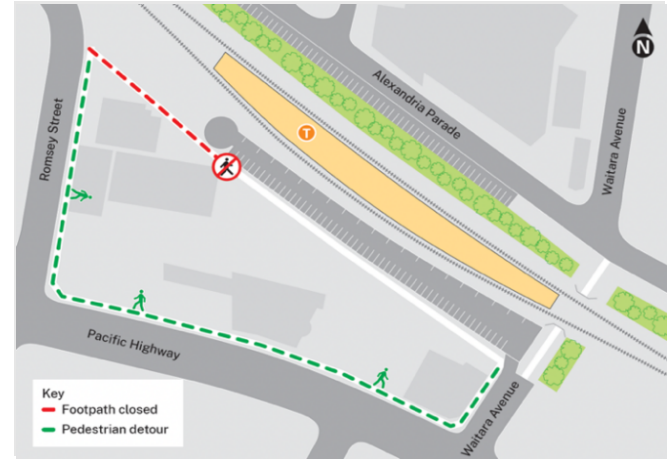
We are continuing to upgrade the commuter car park with temporary closure of parking spaces **until early 2024**. There are 33 spaces currently available for use. Signage is in place to assist motorists.

Footpath closure and changes to pedestrian access

We are continuing to upgrade the footpath between Romsey Street and Waitara Avenue which runs along the length of the commuter car park. The path will be closed until early 2024, weather permitting.

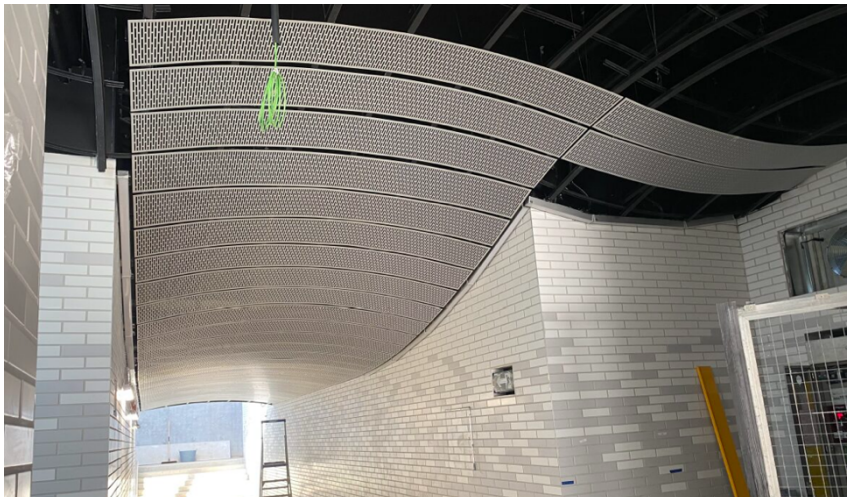
Please follow detour signage in place to access the station via the Pacific Highway footpath.

Map of temporary station detour



Construction progress images

Below: The new platform staircase with tiled walls and high-level screens installed during October 2023.



Above: The new underpass architectural ceiling underway, approximately 40 per cent of the ceiling panels were installed during October 2023.



Contact us



Project Infoline **1800 684 490**
24-hour Construction Response Line
1800 775 465



projects@transport.nsw.gov.au



transport.nsw.gov.au/waitara



Interpreter service

For languages other than English call 131 450
Arabic • Cantonese • Hindi • Mandarin • Vietnamese

لطلب خدمة الترجمة الشفهية للغات غير الإنجليزية اتصل بالرقم
131 450

獲取英語以外的其他語言傳譯協助服務可以致電**131 450**

अंग्रेज़ी के अतिरिक्त अन्य भाषाओं के लिए दुभाषिया सेवा **131 450**
पर कॉल करें

获取英语以外的其他语言口译协助服务可以致电**131 450**

Để có dịch vụ thông ngôn cho các ngôn ngữ khác tiếng Anh,
gọi số **131 450**