

More Trains, More Services

Waterfall Stabling Yard and Platform Extension Project



What's been happening?

To contribute to an improved rail network Waterfall Station is being upgraded to accommodate a new fleet of longer trains, including track work within the rail corridor and a new stabling yard.

Last month, we have been removing track, relocating underground utilities and excavating material from the rail corridor at Waterfall.

Working over the April long weekend

From **8pm Thursday 1 April to 2am Tuesday 6 April**, we will be working outside of our standard construction hours. This work will occur during a Sydney Trains track work period, while passenger services are not running. Scheduling our work to coincide with Sydney Trains track work periods minimises disruptions to commuter services and improves the safety of our construction team.

We acknowledge some construction activities can be disruptive at times, and would like to thank you for your ongoing support as we work hard to deliver an improved rail network.

For up to date information about services during these times please visit transportnsw.info or call 131 500.

We are committed to minimising disruption to local residents and businesses and will contact you directly if your property is impacted by our activities.

Activities in April

During April, you will see us continuing excavation, spraying concrete against the face of the embankment (shotcreting) and installing new overhead wiring, track and turnouts, drainage, signalling equipment and combined service routes to protect and carry cabling underground.

Changes to parking

To enable construction activities to be completed safely, we will require temporary use of approximately 30 commuter car spaces from **11pm Tuesday 30 March to 6pm Friday 9 April**.



Traffic control will reserve these spaces and signage has been installed to advise motorists about these temporary changes.

Helensburgh storage site

In an effort to avoid sending excavated material to landfill, we have been working with National Parks and Wildlife Service and Wollongong City Council to identify a suitable access route to the proposed storage site at Helensburgh in the rail corridor. This is an opportunity to reuse sandstone and clean material from Waterfall which will be used to upgrade roads, walking tracks and fire trails.

Removal of material at Waterfall is a critical activity to enable the construction of new track to improve train services in the future. The material being excavated from the Waterfall construction site is currently being taken to two sites south of the station. These sites are almost at capacity.

In our March project update we advised you about our intention to transport material to a third site located at Helensburgh. Further sites in the vicinity would be explored once capacity is reached at this location. Moving material to the storage site would only occur during standard construction hours and measures will be in place to ensure that we are

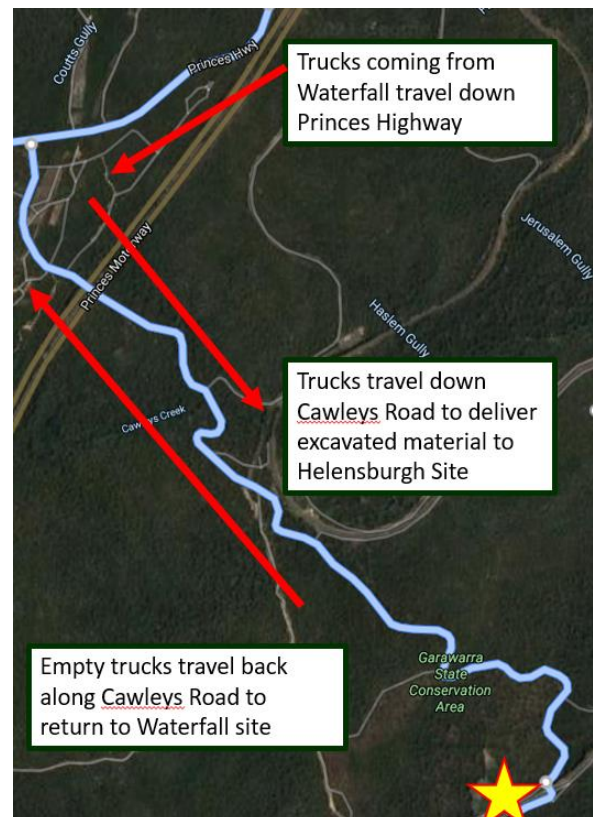
compliant with environmental conditions as outlined by planning approval.



Proposed access arrangements to Helensburgh storage site

Initially we proposed the use of Parkes Street and Wilsons Creek Road to access the site to reduce the length of time that we would be impacting the community.

In response to feedback received from residents in Helensburgh, the use of Cawleys Road is proposed as the preferred access option.



Vehicles would travel from the project site at Waterfall along the Princes Highway and exit near Cawleys Road to transport materials to the storage site, and return along the same route.

Depending on community feedback, the project team would like to use Wilsons Creek Road and Parkes Street in extenuating circumstances. This would only be contemplated as a temporary measure during extended periods of inclement weather when Cawleys Road cannot be safely used.

How does the community benefit from the storage and re-use of excavated materials?

- The proposal will deliver substantial sustainability outcomes by being able to reuse crushed sandstone and clean material which will be used to upgrade roads, walking tracks and fire trails
- Transport for NSW will avoid sending 35,000 tonnes of excavated material to landfill, saving at least \$3.5M financial cost to government in quarry fees
- The proposal will also save the National Parks, Wildlife Service (NPSW) and the Rural Fire Service (RFS) at least \$2.5M that they would need to spend to purchase materials and on contractor costs to transport the material
- If Cawleys Road is approved as the access route to site, Transport for NSW will upgrade Cawleys Road providing greater benefit for the community, NPSW and RFS.



Have your say

The community is invited to comment on the proposal. Have your say by:

- scanning the QR code at the bottom of the page, or
- visiting the webpage and completing the feedback form at:
<https://yoursay.transport.nsw.gov.au/mtms-helensburgh>

Feedback received will be carefully considered and evaluated in reaching a decision about whether there is support for the use of Cawleys Road as the primary access route and use of Wilsons Creek Road and Parkes Street as a temporary measure during extended periods of inclement weather.

The proposal would only proceed if planning approval is granted. Where planning approval is not granted, material would be transported to landfill.

Online community information session

Transport for NSW will be hosting an online forum where you can hear from the project team about the project and options considered for the access route.

Through use of the online chat function, you will be able to ask your questions and have them answered by the project team.

The forum will run for approximately 45 minutes on **Tuesday 30 March at 5pm.**

To register for the session please email projects@transport.nsw.gov.au by **9am Monday 29 March.** This will allow us to email you the weblink details to enable your participation.

Transporting material to the Helensburgh storage site will only start after Transport for NSW has considered community feedback and finalised all planning approvals.

Next steps

The community will be informed about the feedback from consultation and a decision on the access route as soon as possible via the project notification and update to the project website.



How will we protect the environment?

- environmental management plans will be developed and implemented with mitigation measures to minimise any environmental impacts
- measures such as covering loads during transportation and storage, regular surveys of the roadway before and after material delivery will be carried out
- we will utilise watercarts for dust suppression and cover with fabric at the end of each shift to ensure compliance with environmental conditions.

Changes to standard construction hours

To support the construction industry through coronavirus, in March 2020 the NSW Government introduced an amendment to the legislation regarding standard construction hours which enabled activities to be carried out between 7am and 6pm on weekdays, weekends and public holidays.

This amendment ends on Thursday 25 March 2021 and standard construction hours across all of our construction sites will revert back to 7am until 6pm Monday through Friday, and 7am until 1pm on Saturdays.

This weekend

On **Saturday 27 and Sunday 28 March 2021**, we will be continuing construction activities outside of standard construction hours, until 5pm.

This work will be similar to previous weekend construction activity and is not expected to be noisy or provide any disruption to local residents.

We will continue to notify you in advance of any work scheduled to take place outside of standard construction hours.

About More Trains, More Services

Over the next ten years the More Trains, More Services program will simplify and modernise the rail network so that customers can expect more frequent train services, with less wait times, less crowding and more seats on a simpler, more reliable network.

Contact us

For more information or to subscribe for project updates:

 project information line: 1800 684 490

 24/7 construction response line:
1800 775 465

 projects@transport.nsw.gov.au

 www.transport.nsw.gov.au/mtms

Translation



If you require the services of an interpreter, please contact the Translating and Interpreting Service on **131 450** and ask them to contact Transport for NSW on **1800 684 490**.

An interpreter will assist you with translation.