

More Trains, More Services

Waterfall Stabling Yard and Platform Extension Project

Over the next ten years the More Trains, More Services program will simplify and modernise the rail network. The program aims to improve capacity throughout the network to provide more frequent train services with less wait times and a more comfortable journey.

Project update

Parts of the rail corridor north of the station are being widened for a new rail loop, which will improve the way freight and passenger services travel.

Other improvements at Waterfall include extensions to platforms that will allow for the introduction of the New Intercity Fleet, as well as a new stabling yard to increase the efficiency of rail operations.

Site investigations and enabling work is underway in preparation for the start of main construction activities.

This work is expected to take two years to complete and we are committed to working closely with our customers, local residents, businesses and station staff during construction.



Enabling work at Waterfall Station



Construction progress on the retaining wall at Waterfall Station

Work we are doing to improve the station for customers and our staff

- finalising installation of a new retaining wall along the boundary to widen the rail corridor and provide more tracks
- extending the northern end of the island platform by about 40 metres to accommodate the longer fleet of intercity trains and allow passengers to access all carriages
- rearranging tracks on the western side of the rail corridor to create a new train stabling yard to accommodate additional trains and introduce a freight loop
- realigning and installing new overhead wiring and signalling equipment so the new trains can operate safely and efficiently
- installing a new staff amenities building and connecting a footbridge to assist with efficient cleaning and maintenance of the new trains
- enhancing safety on the platforms by upgrading lighting, closed circuit television, the passenger announcement system, tactile paving and line marking.

What you will notice

We are continuing to deliver projects across NSW while ensuring the safety of all staff and the community. In line with current Australian Government guidelines around slowing the spread of Coronavirus and social distancing, all work will be carried out at a safe physical distance where possible and necessary hygiene practices will be observed.

Activities being undertaken in August include:

- continued construction on the retaining wall and ongoing survey work
- establishment of site compounds and mobilisation of construction vehicles
- removal of redundant wires and associated infrastructure
- track removal and re-alignment
- removal and reconfiguration of signalling equipment
- vegetation removal within the corridor to enable earthworks.

Construction hours

To support the industry and continue the delivery of critical infrastructure, the NSW Government has introduced new rules allowing construction sites to operate on weekends and public holidays.

Standard construction hours are now 7am to 6pm Monday to Friday, weekends and public holidays. These changes have been made to make sure we can keep our work sites safe through social distancing and support the health and wellbeing of our workers.

Weekend and night work

To minimise traffic impacts and service disruption, and to improve the safety of customers, workers and the community, some night work is required this month.

Evening work will take place on Tuesday's between 6pm and 10pm.

Mid-week night work will take place between 6pm and 7am on:

- Wednesday 5 and Thursday 6 August
- Wednesday 12 and Thursday 13 August
- Saturday 15 and Sunday 16 August
- Wednesday 19 and Thursday 20 August
- Wednesday 26 and Thursday 27 August

From **2am Saturday 15 August until 2am Monday 17 August**, construction will be carried out during a scheduled Sydney Trains track-work weekend where no passenger services will be running. Completing work during this track-work period allows the construction team to safely carry out essential activities inside the rail corridor.

For up to date information about services during these times please visit transportnsw.info or call 131 500.

Temporary traffic and parking impacts

During mid-week night work, a temporary speed reduction will be in place on the Princes Highway between Bundarra Street and Eckersley Road from 80 km/h to 40km/h, and traffic control will be in place to assist motorists and pedestrians during this time.

Approximately 30 commuter car spaces will be unavailable between 11pm, Tuesday 11 August and 6pm, Wednesday 19 August to allow for a temporary site set-up. Traffic control and signage will be in place to assist motorists and pedestrians during this time.

Minimising impacts

We acknowledge the disruptive nature of construction work and our on-site team will minimise impacts where possible, including:

- completing high impact work during standard hours to minimise noise impacts on residents where possible
- stopping work at regular intervals to allow for respite periods and installing noise barriers to shield residents from high impact noise activities
- turning off machinery when not in use and using non-tonal reversing alarms to reduce potential noise impacts to the surrounding community
- noise monitoring to ensure strict environmental conditions relating to noise, vibration and dust management are adhered to.

Meet the General Manager

David is the General Manager covering More Trains, More Services projects between Mortdale and Kiama.

Having worked in construction for 26 years, David has led rail projects both nationally and internationally.

When he is not on a construction site, you will find David by the ocean fishing, attempting to teach his one year old grandson how to fish, or volunteering for Marine Rescue NSW.

Contact us

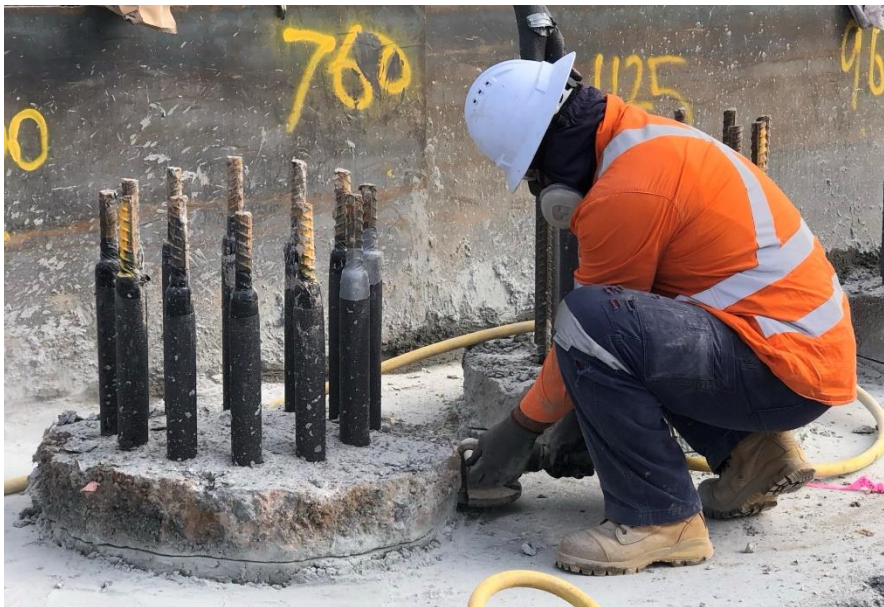
We are exploring ways to connect with the communities we work in, including through email distribution lists, frequent website updates, letterbox notifications and social media. Please visit the project webpage to let us know your preference.

If you would like to subscribe to the project email distribution list please contact us by:

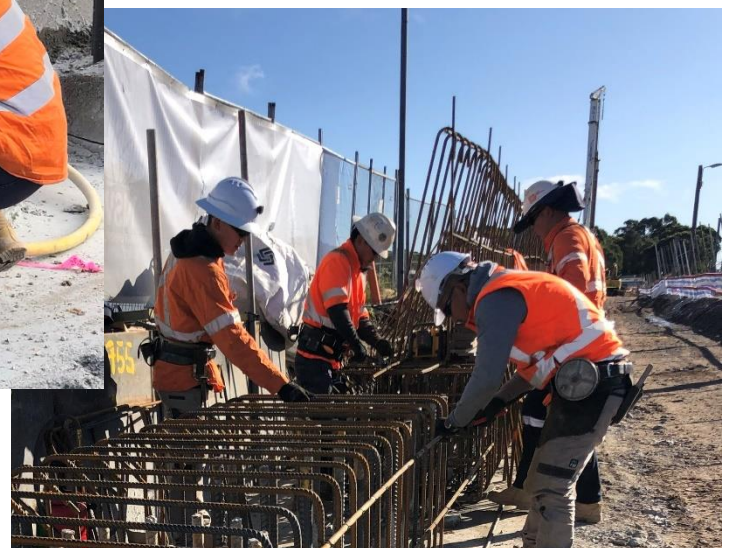
- calling: **1800 684 490**
- emailing: **projects@transport.nsw.gov.au**

For more information visit yoursay.transport.nsw.gov.au/waterfall

For urgent enquiries or complaints regarding construction activities, please call our **24/7 Construction Response Line on 1800 775 465**.



Enabling work at Waterfall Station



This document contains important information about public transport projects in your area. If you require the services of an interpreter, please contact the Translating and Interpreting Service on **131 450** and ask them to call Transport for NSW on **(02) 9200 0200**. The interpreter will then assist you with translation.

For more information call **1800 684 490**, email projects@transport.nsw.gov.au or visit transport.nsw.gov.au/mtms
For urgent enquiries or complaints regarding construction activities, please call 24 hours **1800 775 465**