

Notification of enabling work during February

At Waterfall Station, modifications including a new stabling yard for additional trains and rail work within the corridor will be completed to improve passenger services. These modifications will increase the number of train services along the line, allowing longer trains to stop at Waterfall and improve the way freight and passenger services travel through the rail network in the future. Early work is now underway in preparation for the main construction work to start later in the year.

Work underway at Waterfall

Abergeldie are carrying out the enabling works including the relocation of utility services and construction of a retaining wall. The project team are currently establishing the site and the work compound and laydown areas.

The following activities will take place throughout February:

- site establishment
- geotechnical and survey works
- vegetation removal
- earth works for piling platforms next to rail corridor
- piling works near the Roads and Maritimes Services (RMS) truck bay
- civil excavations for the installation of new utilities
- vehicle and pedestrian management to manage safe access to and from the site compound from Princes Highway including building a temporary slip road.

Day work

Day work will be required to complete the main activities and will be undertaken during the following hours:

- 7am to 6pm Monday to Friday
- 8am to 1pm Saturday.

Night work

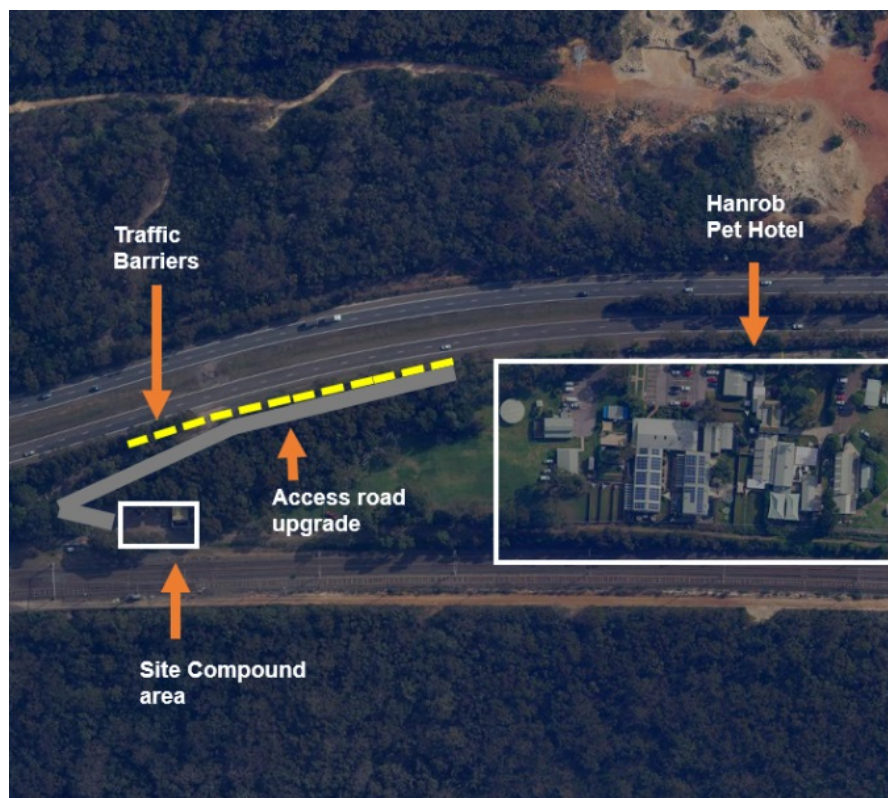
Due to the proximity of the site to the Princes Highway, night work will be required to ensure safety for workers, pedestrians and motorists and to minimise impacts to traffic.

Every effort will be made to minimise any construction impacts to the local community. We will keep the community and customers informed prior to any night work activities taking place.

Works site compound

The works site compound is located within the rail corridor boundary as per map overleaf. This compound is being used during Abergeldie works for office sheds, material storage and construction vehicle parking.

Location of site compound off Princes Highway, Waterfall



Construction timeline

Enabling works is expected to take six months to complete.

Every effort will be made to minimise any construction impacts to the local community. We will continue to keep the community informed about upcoming activities through regular updates.

Contact information

If you would like to speak with the project team contact us:

- project enquiries line **1800 684 490**
- 24 hours construction response line **1800 775 465**
- email projects@transport.nsw.gov.au
- visit: transport.nsw.gov.au/projects/current-projects/transforming-our-rail-network



This document contains important information about public transport projects in your area. If you require the services of an interpreter, please contact the Translating and Interpreting Service on **131 450** and ask them to call Transport for NSW on **(02) 9200 0200**. The interpreter will then assist you with translation.