

## More Trains, More Services

# Waterfall Stabling Yard and Platform Extension Project

Transport for NSW | July 2022

### More Trains, More Services

As part of the More Trains, More Services program, we are upgrading Waterfall Station, the stabling yard and associated rail corridor infrastructure to accommodate the Mariyung fleet.

### We're about to get very busy

July is scheduled to be one of our busiest months at Waterfall Station. Our major upcoming activities include:

- installation of a new staff footbridge, being installed in one piece, overnight between **Saturday 2 July and Sunday 3 July**. This work will require the closure of both south-bound lanes on the Princes Highway.
- installation of a prefabricated amenities building inside the rail corridor, and an Ausgrid transformer on the western side of the Princes Highway, opposite Hanrob Pet Hotels. As this work will involve crane movements, cable pulling across Princes Highway and the installation of supporting infrastructure on the side of the highway, intermittent traffic stoppages will be required:
  - for 5-minute intervals on some weeknights
  - overnight from Sunday 3 July until Monday 4 July
  - between 9am and 7pm on one day only (date to be confirmed).

We will also continue construction activities inside the rail corridor in preparation for the platform extension, installation of the staff footbridge and amenities building, including:

- construction of new track and removal of old track which will include tamping machines and use of vibratory rollers

- installing new overhead wiring and signalling equipment, new drainage and cable routes and deep earth electrodes. This work will require use of vacuum trucks and drill rigs
- construction of staff footpaths within the rail corridor, as well as installation of new boundary and security fencing.

### Upcoming night work

Standard construction hours on this project are **7am-6pm Mondays to Fridays and 8am-1pm on Saturdays**.

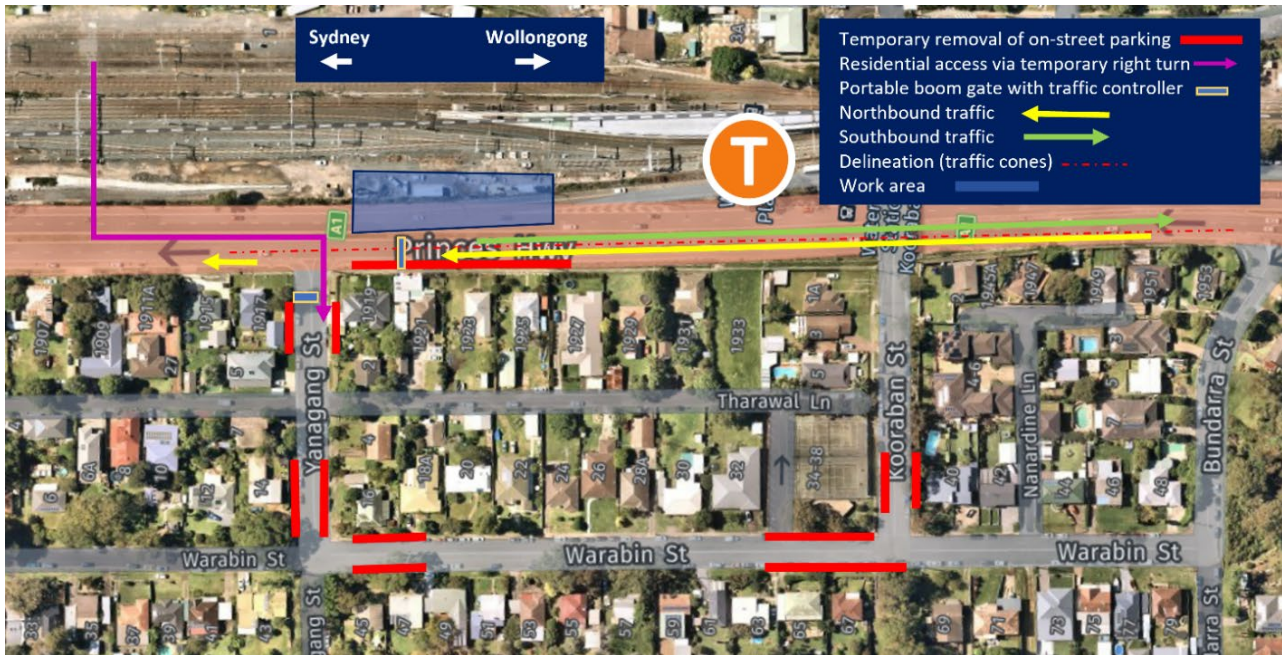
To improve safety of the community and staff, as well as minimise disruptions to commuters and motorists, we will be completing a fair bit of construction outside of standard construction hours in July.

Our main activities have been scheduled to take place during a Sydney Trains trackwork period when no trains are running.

Upcoming weekend and night work will take place:

- from 6pm Friday 1 July and 7am Monday 4 July
- overnight on weekdays, between 6pm and 7am (dates to be confirmed)
- between 7am and 5pm on Saturday 16 July, Sunday 17 July and Sunday 24 July.

Some deliveries and other minor activities will also take place outside of standard construction hours however this work is not expected to impact the community. We will contact you directly if out of hours work is anticipated to be noticeable at your address.



Map of upcoming traffic changes and parking restrictions

## Traffic and parking impacts

To safely facilitate overhead wiring work and crane movements, we will be temporarily closing lanes of the Princes Highway throughout July. Traffic control will be in place to assist motorists with these changes.

Installation of the new staff footbridge will require the temporary closure of the southbound lanes on the Princes Highway for a 12-hour period at night. Both southbound lanes of the Princes Highway, including the shoulder lane, will be closed from **8pm Saturday 2 July until 8am Sunday 3 July**. Southbound traffic will be switched to the northbound carriageway which will operate as a contraflow. The northbound carriage way will operate as a two-lane, two-way configuration over a length of 1.6km. **The speed limit along the contraflow will be lowered to 40km/hour.**

The southbound off-ramp towards Kooraban Street will also be temporarily closed which will prevent direct access into Waterfall Station and residential area. **Local access for residents will be maintained with traffic control** through a temporary right turn from the contraflow on Princes Highway into Yanagang Street. Access to Waterfall Station will be via Kooraban Street and McKell Avenue (see map above).

Parking restrictions on local streets and a section of the northbound shoulder lane on the Princes Highway will be in place from **7pm Wednesday 29 June until midday Sunday 3 July** to allow for safe movements of the rail replacement buses.

Signage will be in place to advise residents of parking changes.

Motorists are reminded to use caution when travelling in the area and expect delays on the Princes Highway and accessing local streets. Please plan your trip in advance and observe for changed traffic conditions.

## Postponed or cancelled work

There is a possibility that some of our planned work may be postponed or cancelled. If there are any changes to our planned work, we will keep you updated. We apologise for any inconvenience this may cause and thank you for your understanding. Please contact us if you have any questions or concerns.

## Contact us

For more information or to subscribe to project updates:

 Project information line: 1800 684 490

 24/7 construction response line: 1800 775 465

 [projects@transport.nsw.gov.au](mailto:projects@transport.nsw.gov.au)

 [www.transport.nsw.gov.au/mtms](http://www.transport.nsw.gov.au/mtms)



If you need help understanding this information, please contact the Translating and Interpreting Service on 131 450 and ask them to call us on 1800 684 490.