

# Waterfall Stabling Yard and Platform Extension Project

## More Trains, More Services

June - July 2023



Transport for NSW acknowledges the Dharawal people of the Dharawal Nation as the Traditional Custodians of the lands on which we work and pay respects to Elders past and present.

The More Trains, More Services program is delivering platform extensions and rail asset upgrades between Sydney's CBD and the South Coast to support the introduction of the Mariyung fleet.

### What work are we doing?

In June and July 2023, we will be completing the following work:

- construction of new, and removal of old track which will include use of tamping machines and vibratory rollers
- installation of new overhead wiring and signalling equipment, drainage, and cable routes
- construction of staff footpaths and elevated access platforms within the stabling yard
- installation of new platform seating
- landscaping vegetated surfaces
- installation of new footpath lighting and cabling inside the rail corridor
- positioning of temporary traffic barriers southbound along the Princes Highway to enable safe installation of new security fencing
- installation of new boundary and security fencing.

### Standard construction hours

Standard construction hours are **7am to 6pm, Monday to Friday and 8am to 1pm Saturday.**

### Weekend work

We will be completing weekend work between:

- **6pm Friday 30 June and 7am Monday 3 July**

In June and July 2023, traffic barrier installation work is also scheduled to take place **overnight on weekdays,**

**between 6pm and 7am.** This work will require closures of the southbound shoulder and one lane on the Princes Highway and is not anticipated to be noisy.

### Why we work outside of standard construction hours

We schedule work outside of standard construction hours during Sydney Trains trackwork periods when no trains are running, minimising disruptions to commuter services and improving the safety of our construction team and customers.

### What will this mean for you?

You may notice:

- workers and vehicles
- traffic controllers and signage
- noise from machinery and equipment.

### Temporary changes to commuter car parking

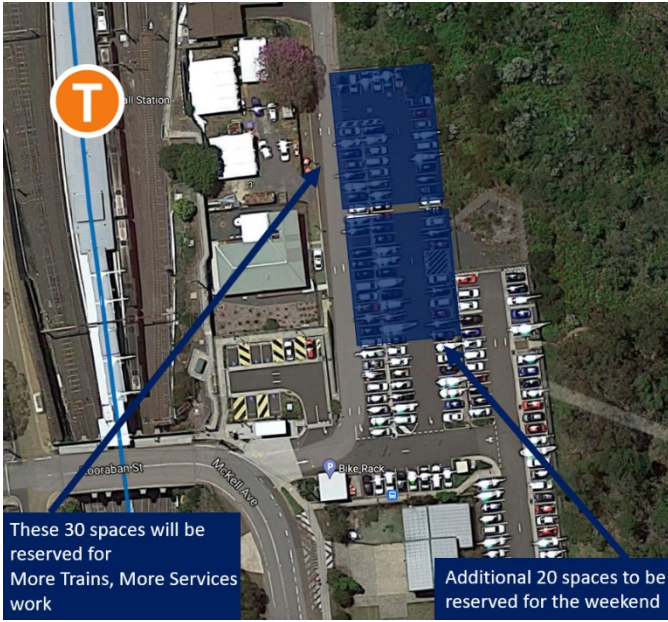
To support construction activities at Waterfall, we require temporary use of approximately **30 commuter car spaces** from **11pm Tuesday 27 June to 6pm Wednesday 5 July 2023.**

We will also require an **additional 20 car spaces** from **6pm Friday 30 June to 5am Monday 3 July 2023** during our scheduled weekend works.

Signage will be in place to assist motorists with these temporary changes.

Please see map overleaf for location of reserved parking spaces.





## Managing our impacts

We understand construction activities may cause disruption to our closest neighbours, and every effort will be made to minimise the impacts where possible, including:

- turning off equipment when not in use and using non-tonal reversing alarms to reduce potential noise impacts to the surrounding community
- locating equipment as far away from residents and businesses as possible
- directing lighting away from residents
- conducting on-site monitoring to ensure compliance with strict environmental conditions relating to noise, vibration and dust management.

## We are going paperless

We are committed to integrating sustainable practices into our projects and are starting to phase out the distribution of paper notifications.

Instead, we will be providing construction updates via email. To stay informed about construction work in your area, please scan the QR code to register for email updates.

If you wish to continue to receive paper notifications, you can request this via the QR code or call us at **1800 684 490** and ask to speak to a member of More Trains, More Services.

**Register to receive important information about upcoming construction work in your area.**



## Contact us



Project Infoline **1800 684 490**  
24-hour Construction Response Line  
**1800 775 465**



[projects@transport.nsw.gov.au](mailto:projects@transport.nsw.gov.au)



[yoursay.transport.nsw.gov.au/  
mtms-waterfall](http://yoursay.transport.nsw.gov.au/mtms-waterfall)



### Interpreter service

For languages other than English call 131 450  
Arabic • Cantonese • Hindi • Mandarin • Vietnamese

لطلب خدمة الترجمة الشفهية للغات غير الإنجليزية اتصل بالرقم  
**131 450**

獲取英語以外的其他語言傳譯協助服務可以致電**131 450**

अंग्रेज़ी के अतिरिक्त अन्य भाषाओं के लिए दुभाषिया सेवा **131 450**  
पर कॉल करें

获取英语以外的其他语言口译协助服务可以致电**131 450**

Để có dịch vụ thông ngôn cho các ngôn ngữ khác tiếng Anh,  
gọi số **131 450**