

Waterfall Stabling Yard and Platform Extension Project

Transport for NSW | **March 2022**

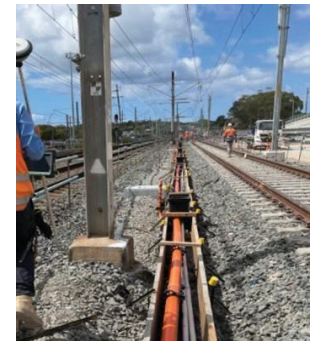


Photo of work in progress and new track at Waterfall, taken in 2021

As part of the More Train, More Services program, we are upgrading Waterfall Station, the stabling yard and associated rail corridor infrastructure to accommodate the Mariyung fleet.

What's next at Waterfall?

Work will continue on the installation of the new staff amenities building, footbridge, track, drainage and signalling upgrades.

In March, our main activities will include:

- lifting in prefabricated signal power rooms using a crane, requiring the temporary closure of one southbound lane on the Princes Highway on one night at Waterfall and Heathcote
- construction of bridge support piers and columns
- installation of the amenities building support structure
- off-site construction of the new staff amenities building
- continuing earthworks to prepare the railway corridor for the new track
- installing new overhead wiring and signalling equipment, new drainage and cable route installation

Electrical upgrade work will also continue at the Heathcote Rail Substation involving trenching work, vacuum trucks, a crane, and temporary traffic changes.

We have scheduled lane closures at night to minimise impacts on traffic. Where lane closures are required, traffic control will be in place to assist motorists and direct vehicles into the second lane, which will always remain open for traffic flow.

Night work

In March, some activities are required to take place outside of standard construction hours (7am – 6pm).

This work has been scheduled to take place during Sydney Trains trackwork periods when no trains are running, minimising disruptions to commuter services and improving the safety of our construction team and customers.

Night work will be carried out between:

- **6pm Friday 4 and 7am Monday 7 March**
- **6pm Friday 18 and 7am Monday 21 March**
- **6pm Friday 25 and 7am Monday 28 March.**

Temporary changes to commuter car parking



As construction progresses and new track and infrastructure is installed, we need additional space to park construction vehicles required to facilitate work. We will require temporary use of approximately 28 commuter car spaces from 21 February until October 2022. Where possible we always try to avoid impacting commuter car spaces, and if an alternate solution is identified, we will return these spaces to commuters at the earliest opportunity. We will continue to work closely with Sydney Trains and monitor the demand for parking each month to minimise impacts where possible.

How can we better communicate with you?

We strive to develop and maintain strong relationships with our closest neighbours, businesses, customers and stakeholders within the communities in which we work. We would like your feedback on the way we keep you informed about construction activities. If you would like to provide your feedback, please scan the QR code below of visit

yoursay.transport.nsw.gov.au/community-engagement



Construction hours

The NSW Government has introduced rules to support industry and continue the delivery of critical infrastructure during COVID-19. In accordance with the Environmental Planning and Assessment (COVID-19 Development – Infrastructure Construction Work Days No. 2) Order 2020, standard construction hours are **7am to 6pm Monday to Sunday, including public holidays**. COVID-19 construction hours will end on 31 March 2022. All work will be carried out in line with current NSW Government Public Health Orders and Restrictions, which are subject to change.

Contact us

If you have any questions or would like more information on the project, please contact our project team:



Project information line: 1800 684 490

24/7 construction response line:
1800 775 465



projects@transport.nsw.gov.au



www.transport.nsw.gov.au/mtms



If you need help understanding this information, please contact the Translating and Interpreting Service on 131 450 and ask them to call us on 1800 684 490.