

### Notification of enabling work during May

The safety of our project team and the community is our top priority. Currently, project work is continuing on site in accordance with current government policies regarding COVID-19 and mitigation measures, including safe working practices, have been implemented.

### Revised construction hours due to COVID-19

Under new rules introduced by the NSW Government to support the construction industry during the COVID-19 pandemic, construction sites can now operate on weekends and public holidays.

Under the new Order, **standard construction hours are now 7am to 6pm every day, including public holidays**. The Environmental Planning and Assessment (COVID-19 Development – Infrastructure Construction Work Days) Order 2020 will continue until the COVID-19 pandemic is over, or the advice of NSW Health changes.

It enables workers to abide by social distancing rules while keeping construction projects progressing by allowing building work to be spread across more days of the week.

### Construction at Waterfall

Abergeldie intends to work these additional hours. We are committed to minimising the impacts on the community.

On the Waterfall Enabling Work Project all work activities, where possible, will be undertaken during the following hours:

- **7am to 6pm Monday to Friday**
- **7am to 5pm Saturdays**
- **No work on Sundays or public holidays.**

The Project team will avoid noisy work where possible during the weekend construction hours.

All reasonable measures to reduce noise impacts will continue to be implemented, including conducting high noise generating activities during weekdays where possible, and implementing respite periods as required. Noise intensive activities are still subject to restrictions specified in the project approval.

Any work proposed outside of these standard hours will still require review and approval by Transport for NSW. We will continue to notify the community of any upcoming out-of-hours work or new construction activities at least seven days in advance.

We will keep the community informed of any future changes to standard construction hours and we appreciate your patience while we complete this work.

## Work underway at Waterfall during May

During April, we continued work on the retaining wall and utility relocation inside the rail corridor at Waterfall. Part of this work required the project team to work within the road shoulder on the Princes Highway. After consultation with the community, this portion of work was completed over five consecutive nights. We appreciate the feedback received from community and the support in making this happen.

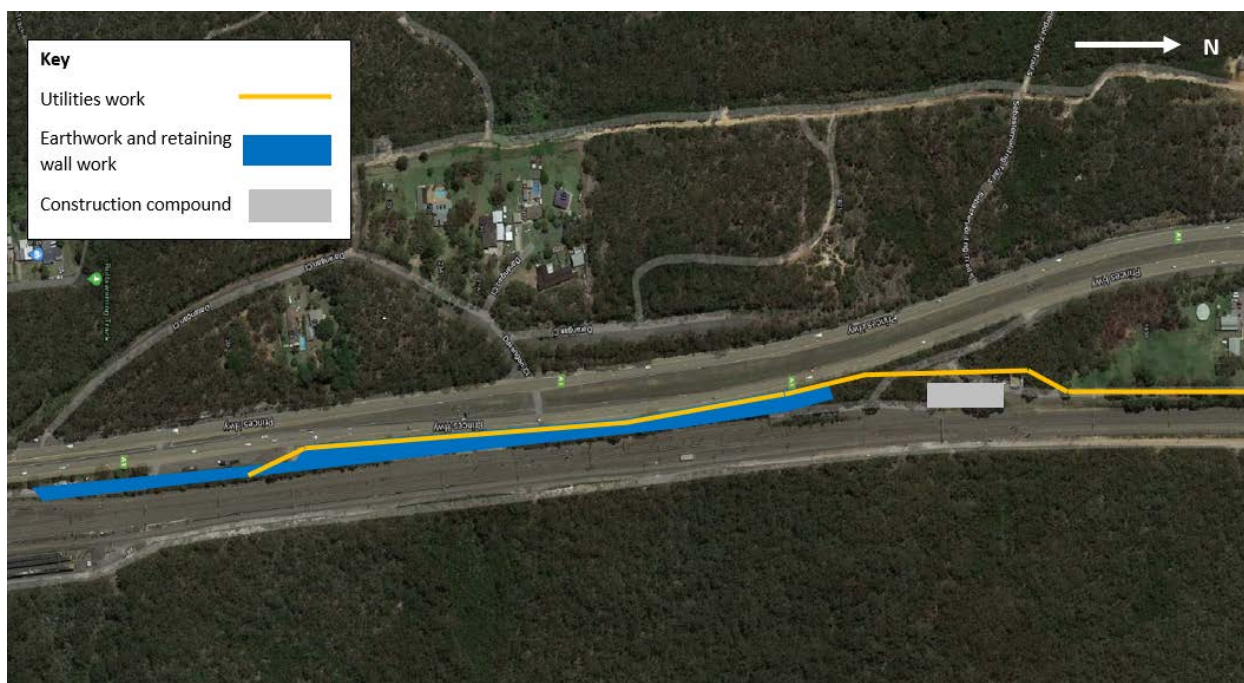
Work is continuing to prepare for major construction activities commencing mid-year which will enable longer trains to stop at Waterfall and improve the way freight and passenger services travel through the rail network in the future.

Abergeldie are carrying out the enabling work including the relocation of utility services and construction of retaining walls. During May, the following activities will take place:

- earthwork and piling work for construction of retaining walls in the rail corridor
- civil excavations for the relocation of utilities.

Every effort will be made to reduce noise impacts while completing this program of work.

## Map of work locations on Princes Highway, Waterfall



**Image 1:** Map showing locations of utility work, earthwork and retaining wall work.

## Tell us how we can best keep in touch with you

To ensure the local community is well informed about our project work and can be consulted in a timely manner, we would like to know how we can best contact you. To let us know how you would like to receive project updates contact us:

### Contact information

If you would like to speak with the project team contact us:

- call: **1800 684 490**
- 24 hours construction response line: **1800 775 465**
- email: [projects@transport.nsw.gov.au](mailto:projects@transport.nsw.gov.au)
- visit: [transport.nsw.gov.au/projects/current-projects/transforming-our-rail-network](http://transport.nsw.gov.au/projects/current-projects/transforming-our-rail-network)



This document contains important information about public transport projects in your area. If you require the services of an interpreter, please contact the Translating and Interpreting Service on **131 450** and ask them to call Transport for NSW on **(02) 9200 0200**. The interpreter will then assist you with translation.