

More Trains, More Services

Waterfall Stabling Yard and Platform Extension Project



Overhead wiring work taking place at Waterfall in February 2021

What's been happening?

To contribute to an improved rail network, Waterfall Station is being upgraded to accommodate a new fleet of longer trains, including track work within the rail corridor and a new stabling yard.

During April, we installed:

- eight underground track crossings for the future installation of new cables
- four track crossovers
- 500 metres of trackside drainage
- overhead wiring and structures
- signalling equipment

We completed some substantial construction activities over the April long weekend and would like to thank you for your ongoing support as we work to deliver an improved rail network.

What's next?

In May, we will be completing activities along a two-kilometre stretch between Waterfall Station and Heathcote. This work will include:

- excavation activities to enable underground service installation which will support the future stabling facility
- piling work for a concrete traffic barrier inside the corridor beside Princes Highway
- installation of soil nails (anchors drilled into the ground to secure built infrastructure) and shotcrete activities (spraying concrete against the face of excavation) to support our excavation and stabilise the earth

Construction vehicles will continue to access site using the truck bay off Princes Highway in order to transport material and enable deliveries.

Helensburgh storage site: decision on access route

In our last notification we provided further detail about our project and plans for transporting reusable material from Waterfall to the storage site inside the rail corridor at Helensburgh and invited you to provide feedback on our proposed access route.

Thank you to those of you who provided your feedback in March and April through completing our survey, providing a submission or attending the online community information session.

70 per cent of submissions received supported the use of Cawleys Road as our access route to this site.

Planning approval has been granted for access to the storage site via Cawleys Road, transporting material during standard construction hours for a period of approximately 6 months.

We have upgraded Cawleys Road and recently started storing clean excavated material at this site.

For more information visit yoursay.transport.nsw.gov.au/mtms-waterfall

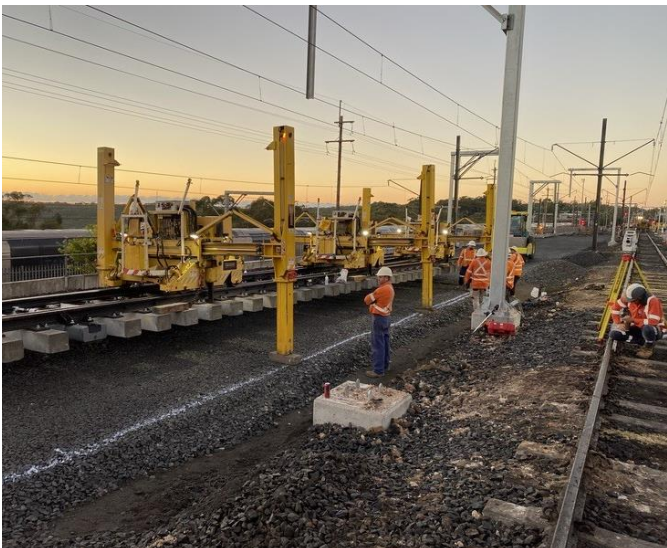


Image of construction team completing track installation work over the April long weekend

Changes to construction hours

To support the construction industry through Coronavirus, the NSW Government have extended an amendment to the legislation regarding standard construction hours. This amendment enables activities across all our sites to be carried out between **7am and 6pm on weekdays, weekends and public holidays**.

We will always be mindful of the community when planning construction activities to reduce impacts of construction activity where possible.

In May, no activities will take place outside of these standard construction hours.

About More Trains, More Services

Over the next ten years the More Trains, More Services program will simplify and modernise the rail network so that customers can expect more frequent train services, with less wait times, less crowding and more seats on a simpler, more reliable network.

Contact us

For more information or to subscribe for project updates:

 project information line: 1800 684 490

 24/7 construction response line:
1800 775 465

 projects@transport.nsw.gov.au

 www.transport.nsw.gov.au/mtms

Translation



If you require the services of an interpreter, please contact the Translating and Interpreting Service on 131 450 and ask them to contact Transport for NSW on 1800 684 490.

An interpreter will assist you with translation.