

# Waterfall Stabling Yard and Platform Extension Project

## More Trains, More Services

May 2023



Transport for NSW acknowledges the Dharawal people of the Dharawal Nation as the Traditional Custodians of the lands on which we work and pay respects to Elders past and present.

The More Trains, More Services program is delivering platform extensions and rail asset upgrades between Sydney's CBD and the South Coast to support the introduction of the Mariyung fleet.

### What work are we doing?

In May 2023, we will be completing the following work:

- construction of new track and removal of old track which will include tamping machines and use of vibratory rollers
- installing new overhead wiring and signalling equipment, new drainage, and cable routes
- construction of staff footpaths within the rail corridor and installation of furniture on the platform island
- installation of new boundary and security fencing
- installation of new footpath lighting and cabling
- construction of new elevated safe access platforms on staff footpaths
- commissioning of high voltage equipment at Waterfall
- installation and removal of traffic barriers along the Princes Highway southbound to allow for new security fencing.

### Standard construction hours

Standard construction hours are **7am to 6pm, Monday to Friday and 8am to 1pm Saturday.**

### Weekend work

We will be completing weekend work between:

- **6pm Friday 12 May and 7am Monday 15 May**

In May, traffic barrier installation work is also scheduled to take place **overnight on weekdays, between 6pm and**

**7am.** This work will require the closure of the southbound shoulder and one lane on the Princes Highway.

### Why we work outside of standard construction hours

We schedule work outside of standard construction hours during Sydney Trains trackwork periods when no trains are running, minimising disruptions to commuter services and improving the safety of our construction team and customers.

### What will this mean for you?

You may notice:

- workers and vehicles
- traffic controllers and signage
- road closures and reduced speed limits
- noise from machinery and equipment.

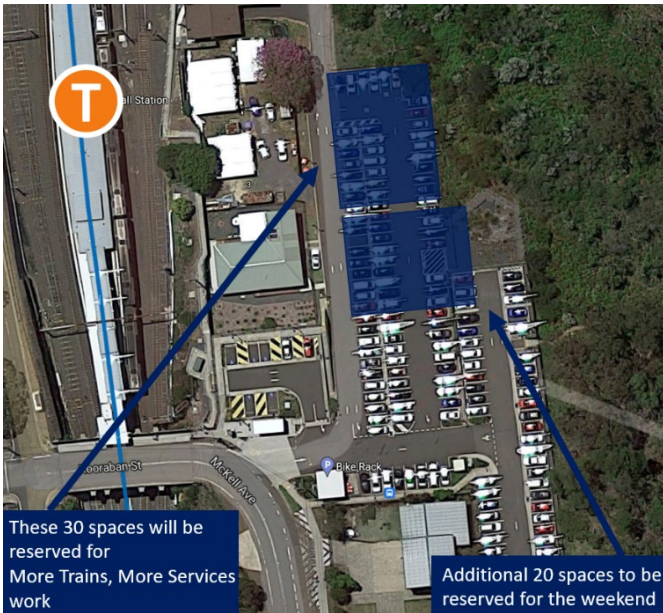
### Temporary changes to commuter car parking

To support construction activities at Waterfall, we require temporary use of about **30 commuter car spaces** from **11pm Tuesday 9 May to 6pm Wednesday 17 May 2023.**

We will also require an **additional 20 car spaces** from **6pm Friday 12 May to 12am Monday 15 May 2023.**

Please see map overleaf for location of reserved parking spaces.





## Managing our impacts

Mitigation measures we use include on-site monitoring to ensure compliance with strict environmental conditions relating to noise, vibration, and dust management.

This includes:

- reducing our noise as much as possible
- targeted lighting to minimise light spill.

## We are going paperless

### This is the last paper notification you will receive from us

We are committed to integrating sustainable practices into our projects and reducing environmental impacts. After May 2023, we will no longer be distributing paper notifications to residents unless requested. Instead, we will contact you via email when there is construction work that may impact you.



To register for digital construction updates, please scan the QR code and fill out the form.

If you wish to continue to receive paper notifications, you can request this via the QR code or call us at 1800 684 490 and ask to speak to a member of More Trains, More Services.

**If you do not register for updates, you may miss out on important updates and potential inconveniences caused by our construction work.**

Thank you for supporting us to create a more sustainable future.

## Contact us



Project Infoline **1800 684 490**  
24-hour Construction Response Line  
**1800 775 465**



**projects@transport.nsw.gov.au**



**yoursay.transport.nsw.gov.au/  
mtms-waterfall**



### Interpreter service

For languages other than English call 131 450  
Arabic • Cantonese • Hindi • Mandarin • Vietnamese

لطلب خدمة الترجمة الشفهية للغات غير الإنجليزية اتصل بالرقم  
**131 450**

獲取英語以外的其他語言傳譯協助服務可以致電**131 450**

अंग्रेज़ी के अतिरिक्त अन्य भाषाओं के लिए दुभाषिया सेवा **131 450**  
पर कॉल करें

获取英语以外的其他语言口译协助服务可以致电**131 450**

Để có dịch vụ thông ngôn cho các ngôn ngữ khác tiếng Anh,  
gọi số **131 450**