

# Harris Street pedestrian crossing removal

## Western Distributor Network Improvements

November 2023



The Western Distributor connects Wangal and Gadigal Country over Rozelle Bay. Transport for NSW acknowledges the Gadigal and Wangal Peoples of the Eora Nation and pays respect to Elders past and present.

Transport for NSW will be removing a Harris Street pedestrian crossing on the southern side of the intersection at Allen Street and installing pedestrian fences to improve pedestrian safety.

### What work are we doing?

As part of the Western Distributor Road Network Improvements project, the Harris Street pedestrian crossing on the southern side of the intersection at Allen Street will be removed.

Work includes:

- grinding and the removal of the pedestrian crossing pavement marking on the southern side of the Harris and Allen Street intersection,
- installing two new temporary pedestrian fences on either side of Harris Street, and
- traffic signal and signage adjustments to support the removal of the pedestrian crossing.

### When and where we'll be working

Work is planned to commence **Wednesday 15 November** and take about 2 night shifts (weather permitting) to complete.

We will carry out work between **8pm and 5am, Sunday to Thursday** to minimise traffic disruptions and provide a safe work environment for our construction crews and road users.

### What will this mean for you?

Our work may be noisy at times, but we will do everything we can to minimise the impact, including completing noisier tasks by midnight.

You may also notice:

- Workers and vehicles
- Traffic controllers and signage
- Reduced speed limits
- Footpath closures
- Noise from machinery and equipment.

### Parking and traffic changes

There will be no changes to parking arrangements while we carry out this work, however, there will be temporary traffic changes while workers are on site.

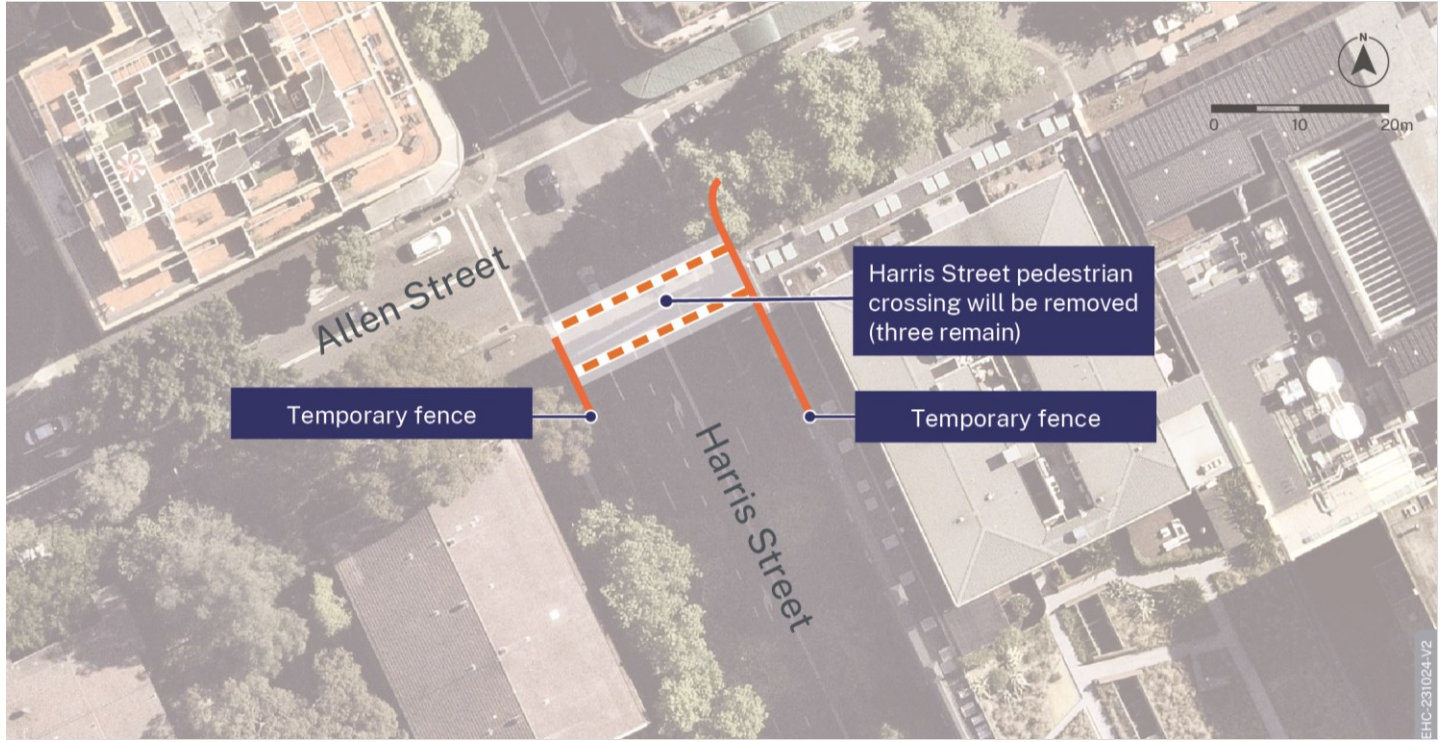
Single lane closures and a work zone speed of 40 km/h will be imposed on adjacent traffic to ensure safety, and traffic control measures will be always in place.

Please follow speed limits, signage, and traffic control directions.

For the latest traffic updates, you can call **132 701**, visit [livetraffic.com](http://livetraffic.com) or download the Live Traffic NSW App.



## Location of work area



## Stay up to date

The NSW Government is building and managing a transport network to support the growth and development of Greater Sydney.

Projects like WestConnex, Western Harbour Tunnel and the M6 will become the backbone of our network to move people, goods, and services across Sydney.

Around 130,000 vehicles use the Western Distributor each day, making it one of Sydney's busiest transport corridors.

Transport will make incremental improvements to modernise and upgrade this section of the network and futureproof the Western Distributor and Anzac Bridge as a safe and reliable connection for people travelling throughout Sydney.

To learn more about current projects on and around the Western Distributor, please visit [nswroads.work/wdc](https://nswroads.work/wdc)

## Contact us



Project Infoline **1800 684 490**  
24-hour Construction Response Line  
**1800 775 465**



[westerndistributor@transport.nsw.gov.au](mailto:westerndistributor@transport.nsw.gov.au)



[nswroads.work/wdni](https://nswroads.work/wdni)



Transport for NSW, PO Box 973  
Parramatta, NSW 2124



Visit the Inner West online portal  
[nswroads.work/innerwest](https://nswroads.work/innerwest)



**Interpreter service**

For languages other than English call 131 450  
Arabic • Greek • Hindi • Mandarin • Vietnamese

طلب خدمة الترجمة الشفهية للغات غير الإنجليزية اتصل  
بالرقم **131 450**

Για υπηρεσίες διερμηνείας σε άλλες γλώσσες εκτός από  
τα Αγγλικά καλέστε το **131 450**

अंग्रेज़ी के अतिरिक्त अन्य भाषाओं के लिए दुभाषिया सेवा  
**131 450** पर कॉल करें

获取英语以外的其他语言口译协助服务可以致电**131 450**

Để có dịch vụ thông ngôn cho các ngôn ngữ khác tiếng  
Anh, gọi số **131 450**

[www.transport.nsw.gov.au/privacy-statement#Your\\_Privacy](https://www.transport.nsw.gov.au/privacy-statement#Your_Privacy)



**For the latest traffic updates:**

Call 132 701, visit [livetraffic.com](https://livetraffic.com) or  
download the app Live Traffic NSW



To subscribe to the email distribution list for this project, please contact [projects@transport.nsw.gov.au](mailto:projects@transport.nsw.gov.au)

Page 2 of 2