

## More Trains, More Services

### Wolli Creek Power Supply Upgrade Project

Transport for NSW | March 2022

#### What are we doing?

Transport for NSW is building a new substation within the rail corridor to create the necessary power supply to support the increase in the number of trains travelling along the T8 Airport Line in the future.

#### What's been happening?

During February, we carried out the following activities:

- continued building the new substation including cabling, electrical, and structural installations
- cable pulling in the rail corridor
- installed a water main on Lusty Street.

#### What's planned next?

In March, we will carry out the following activities:

- continuing building the new substation including cabling, electrical, and structural installations
- deliveries of over-sized infrastructure.

All work is dependent on weather and site conditions and is subject to change.

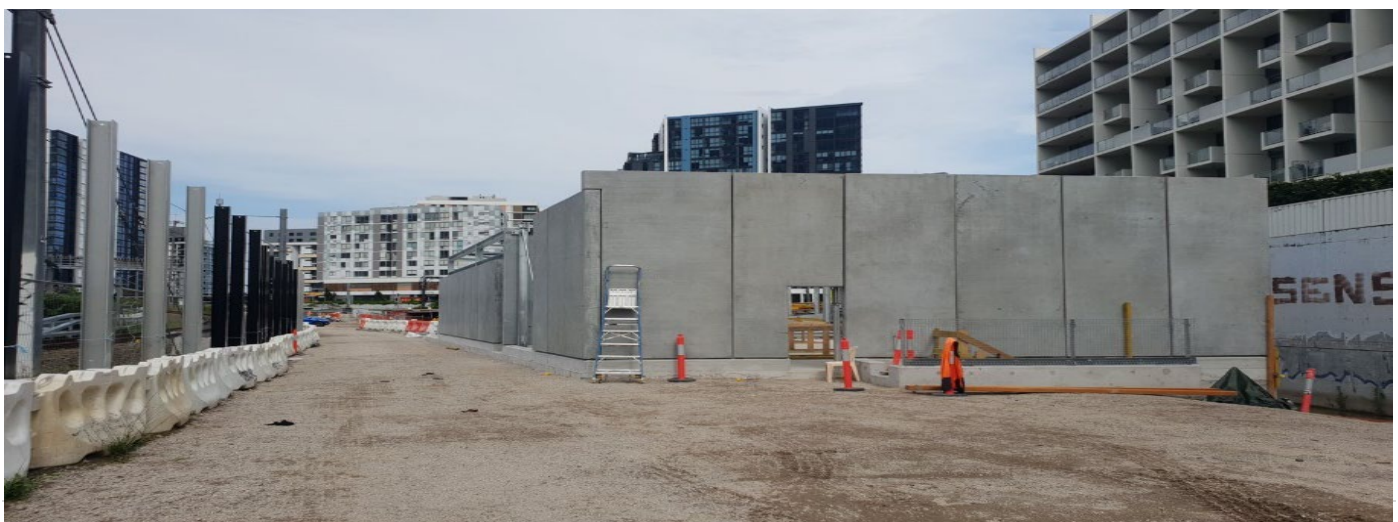
#### When will work take place?

To support the construction industry through the COVID-19 pandemic, the NSW Government extended an amendment to the legislation regarding standard construction hours enabling activities to be carried out between **7am and 6pm Monday to Sunday and public holidays.**

This amendment will expire at the end of March when standard hours will revert to **7am to 6pm Monday to Friday and 8am to 1pm on Saturdays.**

#### Upcoming out of hours work

The project team are expecting the delivery of power transformers to 5A Lusty Street for the substation in mid-March. These deliveries will occur before **7am** due to road and safety regulations. We will notify nearby residents when a delivery date and time frame for the deliveries is confirmed.





## Where will work take place?

The above map shows the work area inside the main site compound of 5A Lusty Street, Wollie Creek.

The project team will continue to utilise the site compounds for deliveries, storage of materials and equipment, offices, pre-start work meetings and worker parking.

## How do we consider the community?

The project team understands construction activities may cause disruption for the community. We will seek to minimise impacts as much as possible and adhere to strict environmental conditions relating to noise, vibration and dust management.

## How are we staying safe?

We continue to deliver projects across NSW while ensuring the safety of all staff and the community. All work will be carry out in line with current Australian Government guidelines around slowing the spread of COVID-19.

## There's a lot happening

Currently there are multiple project teams, transport agencies and contractors working within the Wollie Creek rail corridor. For more information on work being completed by Sydney Trains, please phone **1300 656 999** or visit [www.transport.nsw.gov.au/sydtraincommunity](http://www.transport.nsw.gov.au/sydtraincommunity).

### Contact us

If you have any questions or would like more on the More Trains, More Services project please contact our project team:



1800 684 490



[projects@transport.nsw.gov.au](mailto:projects@transport.nsw.gov.au)



[www.transport.nsw.gov.au/mtms](http://www.transport.nsw.gov.au/mtms)



Level 5, 15 Bourke Road  
Mascot NSW 2020



If you need help understanding this information, please contact the Translating and Interpreting Service on 131 450 and ask them to call us on 1800 684 490.

#### March 2022

Privacy Transport for NSW (TfNSWS) is subject to the Privacy and Personal Information Protection Act 1998 ("PIIP Act") which requires that we comply with the Information Privacy Principles set out in the PIIP Act. All information in correspondence is collected for the sole purpose of assisting in the delivery this project. The information received, including names and **addresses** of respondents, may be published in subsequent documents unless a clear indication is given in the correspondence that all or part of that information is not to be published. Otherwise we will only disclose your personal information, without your consent, if authorised by the law. Your personal information will be held by us at 27 Argyle Street, Parramatta. You have the right to access and correct the information if you believe that it is incorrect.