

More Trains, More Services

Wollongong Stabling Yard and Platform Extension project



What's the latest news?

As part of work on the Wollongong Stabling Yard and Platform Extension project, we have started removing stockpiles, installing sediment controls and erecting boundary fencing in preparation for main construction activities to start later this year.

The project team have been working closely with Sydney Trains to establish an ancillary site inside their staff compound to the west of the station, which will allow safe and efficient access to and from our work areas.

We have also installed temporary fencing and shade cloth as a measure to enhance safety and manage dust from construction activities within the area.

What's coming next?

This month we will be taking delivery of rail components that will be used to upgrade stabling yard tracks. These rail components will be transported on the back of extendable semi-trailer trucks that require a large turning circle to safely deliver the materials to site.

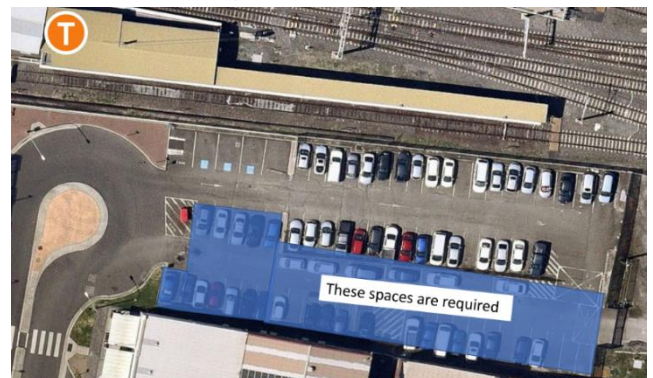
Changes to car parking

To enable the safe delivery of track components, we will require temporary use of approximately 40 commuter car spaces from:

- 12am, Thursday 12 November until 5pm, Friday 13 November
- 12am until 5pm, Monday 16 November

Traffic control will install bollards to reserve these spaces and signage will be installed in advance to advise motorists about these temporary changes.

Alternate parking will remain available in both the multi-storey car park to the west of the station and the commuter car park to the east of the station.



What you need to know about construction hours

Standard construction hours on this project are **7am to 6pm, Monday to Friday**.

In addition to the delivery of rail components outside standard construction hours, we will be completing some overhead wiring work at night between **6pm and 7am** on **Saturday 21 and Monday 23 November**.

This work will be carried out at night when less services are running to minimise impacts on customers and improve safety for our construction team.

This work is not expected to be noisy but the project team understands construction activities may cause disruption for the community. Every effort will be made to minimise impacts where possible and we will also ensure we adhere to strict environmental conditions relating to noise, vibration and dust management.

Construction at Wollongong is expected to take around 18 months to complete and will enable a longer fleet of trains to service Wollongong Station.

How are we keeping out sites safe?

In line with current Australian Government guidelines around slowing the spread of Coronavirus and social distancing, all work will be carried out at a safe physical distance where possible and all necessary hygiene practices will be observed.

Would you prefer digital updates?

We are always exploring ways to connect with the communities where we work while minimising impacts on the environment. To help us reduce paper waste, please visit the project webpage yoursay.transport.nsw.gov.au/mtms-wollongong and complete our survey at the bottom of the page to let us know if you would prefer receive our updates to your inbox instead of your mailbox.

About More Trains, More Services

Over the next ten years the More Trains, More Services program will simplify and modernise the rail network so that customers can expect more frequent train services, with less wait times, less crowding and more seats on a simpler, more reliable network.

Contact us

For more information or to subscribe for project updates:

 **project information line: 1800 684 490**

 **24/7 construction response line:
1800 775 465**

 **projects@transport.nsw.gov.au**

 **www.transport.nsw.gov.au/mtms**

Translation



If you require the services of an interpreter, please contact the Translating and Interpreting Service on **131 450** and ask them to contact Transport for NSW on **(02) 9200 0200**.

An interpreter will assist you with translation.