

Temporary closure of the Golden Highway for night work on the New England Highway upgrade from Monday 5 June

The NSW Government is investing \$97 million for the upgrade between Belford and the Golden Highway to improve traffic flow, travel times and safety for motorists.

Transport for NSW has engaged ACCIONA to deliver the upgrade. Night work will be carried out to complete construction of the roundabout which will provide a connection to the New England Highway.

We will be working at night from **7pm on Monday 5 June to 4am on Friday 16 June** and expect to complete the work in **10 night shifts**, weather permitting. No work will be carried out on **Sunday 11 June** and **Monday 12 June** due to the long weekend.

Traffic changes

This work requires temporary night closures of the Golden Highway from 7pm on Monday 5 June to 4am on Friday 16 June. A detour will be in place from 7pm each night to 4am the following morning, with the exception of Sunday 11 June and Monday 12 June.

Motorists will be detoured via Range Road and the New England Highway. We have included a map to show the detoured route.

Motorists are advised to plan ahead as the detour is expected to add up to 10 minutes of extra travel time.

Access will be maintained for residents and emergency services.

Please keep to speed limits and follow the direction of traffic controllers and signs. For the latest traffic updates, you can call 132 701, visit livetraffic.com or download the Live Traffic NSW App.

How will the work affect you?

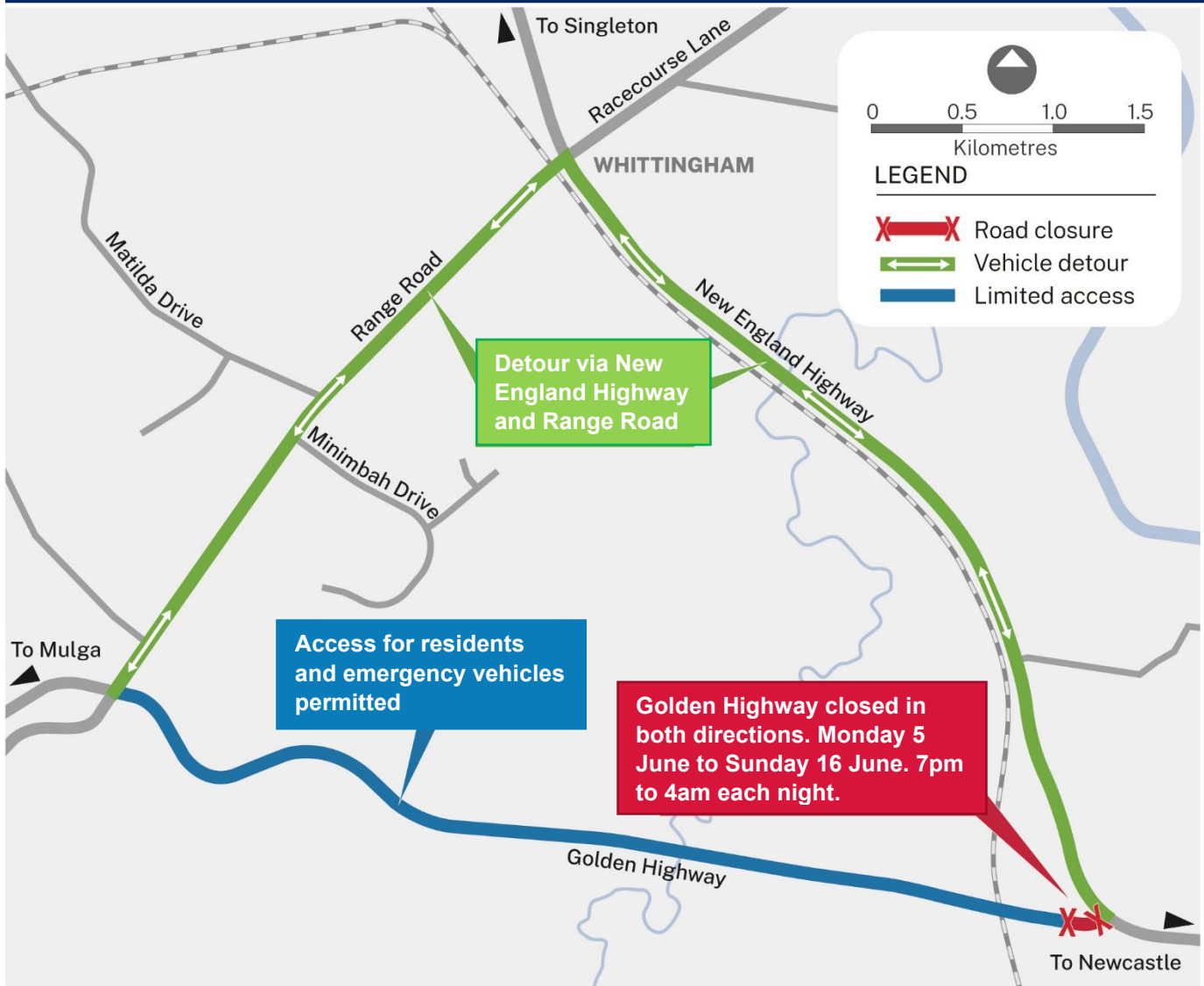
The work will involve the use of machinery which produces some noise. We will make every effort to minimise noise by completing noisier activities earlier in the night and turning off machinery and vehicles when they are not in use. During the temporary closure, residents along the detour route may experience an increase in traffic noise.

Contact

If you have any questions, please contact the project team on the toll-free project line on 1800 945 202 or via email at info.B2GH@acciona.com

For more information on our projects, visit nswroads.work/B2G. Thank you for your patience during this important work.

Detours for night work on the Golden Highway



If you need help understanding this information, please contact the Translating and Interpreting Service on 131 450 and ask them to call us on 1800 945 202.