

Bushfire resilience and maintenance work on the Pacific Motorway, Bonville from Monday 13 March

March 2023

The NSW Government is funding vegetation management and essential maintenance work on the Pacific Highway, Bonville to improve bushfire resilience and safety for motorists.

Transport for NSW is delivering this work which involves vegetation removal and maintenance activities, including:

- removing, trimming, and slashing roadside vegetation
- removing trees identified as hazards
- repairing and maintaining fauna, boundary and rock fall protection fencing and netting
- inspecting drains, bridges, noise walls and fauna overpass locations
- heavy asphalt patching, pavement sealing and other general maintenance activities.

From 5.00am Monday, 13 March to 5.00pm Friday 17 March this work will be carried out 24 hours a day.

As part of this work, there will be a temporary detour in place while work is carried out on the four kilometre section of the north and southbound carriageways.

To minimise the impacts to residents and motorists work will be carried out on one carriageway at a time.

How will the work affect you?

This work will involve the use of machinery, which generate noise. We will make every effort to minimise noise by turning off machinery and vehicles when not in use, positioning machinery away from residences and where possible completing noisy activities early in the evening.

Access to properties will be maintained. If this should change, affected residents will be notified.

Properties located on the detour route will see a temporary increase in traffic.

Traffic changes

There will be temporary traffic changes including a detour via Pine Creek Way (Old Pacific Highway) to ensure the safety of road users and workers.

Detours will be in place for up to five days as each carriageway is closed, and involve:

- **Northbound carriageway closure** – motorists will exit the motorway at the Mailmans Track Road off ramp, travel along Pine Creek Way (former Pacific Highway) and re-enter the Pacific Motorway via the Archville Station Road on ramp.
- **Southbound carriageway closure** – motorists will leave the motorway at Archville Station Road off ramp, travel along Pine Creek Way and re-enter the Pacific Motorway via the Mailmans Track Road on ramp.

Oversize and overmass vehicles will be managed under traffic control with an escort through the work site for vehicles exceeding 4.6 metres in width and 30 metres in length.

Please keep to speed limits and follow the direction of traffic controllers and signs.

For the latest traffic updates, you can call 132 701, visit livetraffic.com or download the Live Traffic NSW App.

Contact

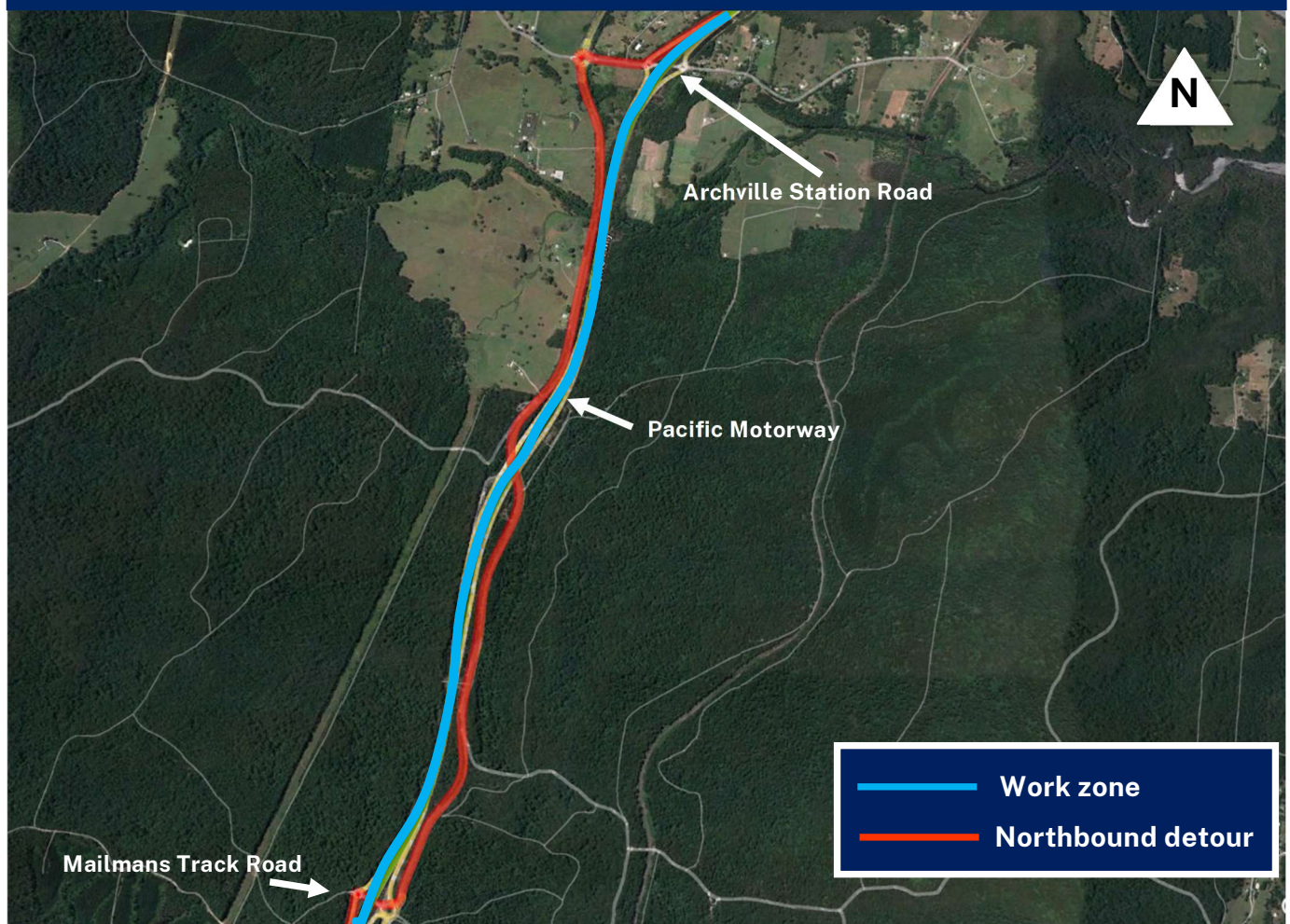
If you have any questions about this work, please contact our Project Engineer, Luke Diamond on 0459 787 285 or email luke.diamond@transport.nsw.gov.au

For more information on our projects, visit roads-waterways.transport.nsw.gov.au



If you need help understanding this information, please contact the Translating and Interpreting Service on 131 450 and ask them to call us on 0459 787 285.

Work area and detour – northbound carriageway closure, Pacific Motorway



Work area and detour – southbound carriageway closure, Pacific Motorway

