

Edmondson Park Commuter Car Park

Commuter Car Park Program

December 2023 and January 2024



Transport for NSW acknowledges the Traditional Custodians of the land and pays respects to Elders past and present.

Construction is underway on the Edmondson Park North Commuter Car Park, which will provide approximately 900 new parking spaces. This will result in a net increase of over 700 additional parking spaces for passengers when the existing car park to the north of the station is closed to the public.

What work are we doing?

The following activities are planned for December and January:

- Upgrading pathways and traffic signals at the intersection along Soldiers Parade and Henderson Road
- Landscaping work around the site
- General construction and finishing work

The project will take a break from **Saturday 23 December 2023 to Sunday 7 January 2024**.

During this time, security patrols will keep the site secure. The team wish you a very happy and safe holiday season.

When and where we'll be working

We'll be working within the site compound off Soldiers Parade, Edmondson Park.

Standard work hours are **7am to 6pm, Monday to Friday and 8am to 1pm, Saturday**.

Subject to approval, road work along Soldiers Parade to upgrade traffic lights with pedestrian crossing at the intersection of Soldiers Parade and Henderson Road will start in the coming months.

During the first stage of the intersection upgrade, up to six parking spaces along Soldiers Parade will be temporarily unavailable for up to two weeks (refer to map overleaf) and there may be some temporary changes to access during this work.

Signage and traffic control will be in place to assist pedestrians and motorists.

What will this mean for you?

You may notice:

- workers and vehicles
- traffic controllers and signage
- noise from machinery and equipment

Equipment to be used may include excavators, rollers, road saws, tipping trucks, concrete mixers, service vehicles, various delivery vehicles, mobile cranes, forklifts, generators and hand tools.

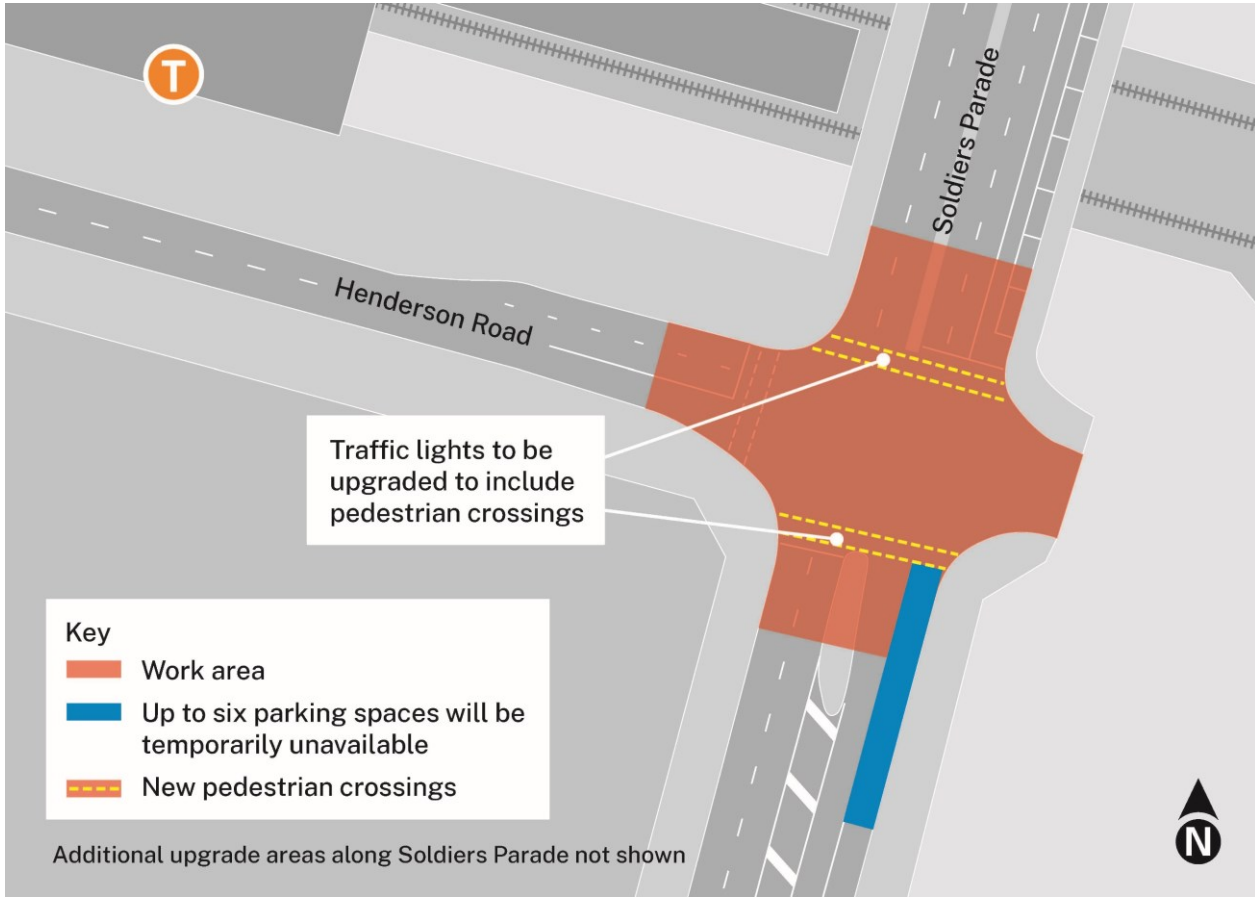
Managing our impacts

Our site has been designed to minimise impact to the community and environment. This includes:

- fencing for safety and security
- reducing our noise as much as possible
- targeted lighting to minimise light spill
- traffic control to help manage construction vehicles entering and leaving our site



Site map of the Soldiers Parade intersection upgrade – Stage One



Contact us



Project Infoline **1800 684 490**
24-hour Construction Response Line
1800 775 465



projects@transport.nsw.gov.au



Visit the online portal go to
www.transport.nsw.gov.au/edmondsonpark



For the latest traffic updates:
Call 132 701, visit livetraffic.com or
download the app Live Traffic NSW



Interpreter service

For languages other than English call 131 450
Arabic • Bengali • Hindi • Nepali • Urdu

لطلب خدمة الترجمة الشفهية للغات غير الإنجليزية اتصل
بالرقم **131 450**

ইংরেজি ছাড়া অন্য ভাষায় দোভাষী পরিষেবা পেতে **১৩১ ৪৫০**
নম্বরে কল করুন

अंग्रेज़ी के अतिरिक्त अन्य भाषाओं के लिए दुभाषिया सेवा **131 450**
पर कॉल करें

अंग्रेज़ी बाहेक अन्य भाषाहरूमा दोभाषे सेवाको लागि **१३१ ४५०**
मा सम्पर्क गर्नुहोस्।

انگریزی کے علاوہ دیگر زبانوں میں ترجمان کی خدمت کے لیے
131 450 پر کال کریں

www.transport.nsw.gov.au/privacy-statement#Your_Privacy