

Ettalong Channel Dredging

Community Update

August 2023

nswroads.work/ettalongdredging



Image of Ettalong Channel (provided by Jim Picot Photography)

The NSW Government is delivering projects to help the boating and wider community safely access, use and navigate our inland and coastal waters.

Background

Ettalong Channel is the entrance to Brisbane Water and is a mostly shallow tidal bay located at the southern end of Central Coast.

The NSW Coastal Dredging Strategy has identified this channel as a significant investment location, prioritising it for dredging to ensure safe navigation including for the use of local ferry services.

Due to the dynamic nature of Ettalong Channel which is prone to shoaling there will be continual need for interventions such as dredging to maintain the channel.

Dredging to start in August

Now that we have the environmental approvals, dredging licence and permits, we will start the dredging project before the end of August, weather permitting.

A contract has been awarded for the dredging work to McQuade Marine who will be using a large ocean going dredging vessel for this project.

We expect the dredging work to take about one month, weather permitting.



Environmental Approval

As part of this maintenance dredging project environmental approval measures will be put in place to protect environmentally sensitive areas including buffer areas to prevent disturbance of sea grasses and daily water quality monitoring. You can find out more information on our Environmental Approval which is published on our website.



Our work hours

Due to the size of the dredging vessel being used for this project, tides and weather may impact our dredging activities. To ensure we complete this work as quickly as possible, and deliver on time, we will be working extended construction hours when needed as follows:

Monday to Sunday 5am to 10pm.

If you have any questions or feedback on work hours please contact our team via our free information line.



Dredged Sand Placement

For this project and to ensure the dredging campaign could begin as soon as possible the dredged sand will be placed on the Ettalong Shoals. Please see map.

This location was chosen for this maintenance dredging campaign as it allowed us to obtain environmental approvals faster.

This sand placement location has also been used on previous dredging campaigns. Assessments indicated that the sand placed here on the shoals tends to travel towards Ocean Beach so it will provide beach replenishment in time.

Other locations for beach replenishment would require more assessments which would impact our start dredging dates.

We will be exploring a number of sand placement locations including beach nourishment in the 10 year strategy and environmental approval which is currently in development. We will seek community feedback on this in the future.



What work will look like

The following work activities will take place:

- Setting up work areas and work sites.
- Setting up environmental control in accordance with the REF.
- Mobilising plant and equipment.
- Implementing changes to navigational aids.
- Carrying out dredging work.



Changes to Navigation

For the safety of workers and the community we ask vessel operators in the area to keep well clear of the dredging work area.

Navigational aids will be repositioned as needed to ensure that the work can be carried out safely. Please follow direction of navigational aids in the area.

Information on changes to navigation will be updated via Marine Notices, and you can also find these updates available on our website.

Safe navigation through any channel is ultimately the responsibility of the vessel's master, taking account of a range of factors including the size of their vessel, weather, tides, water depths and the speed at which they travel.

Conditions and depths can change regularly so caution should be used when navigating in the area. Skippers of deep-drafted vessels of more than one metre are advised to carefully plan any trips through this channel, navigate with caution and, if in doubt, avoid the trip entirely.

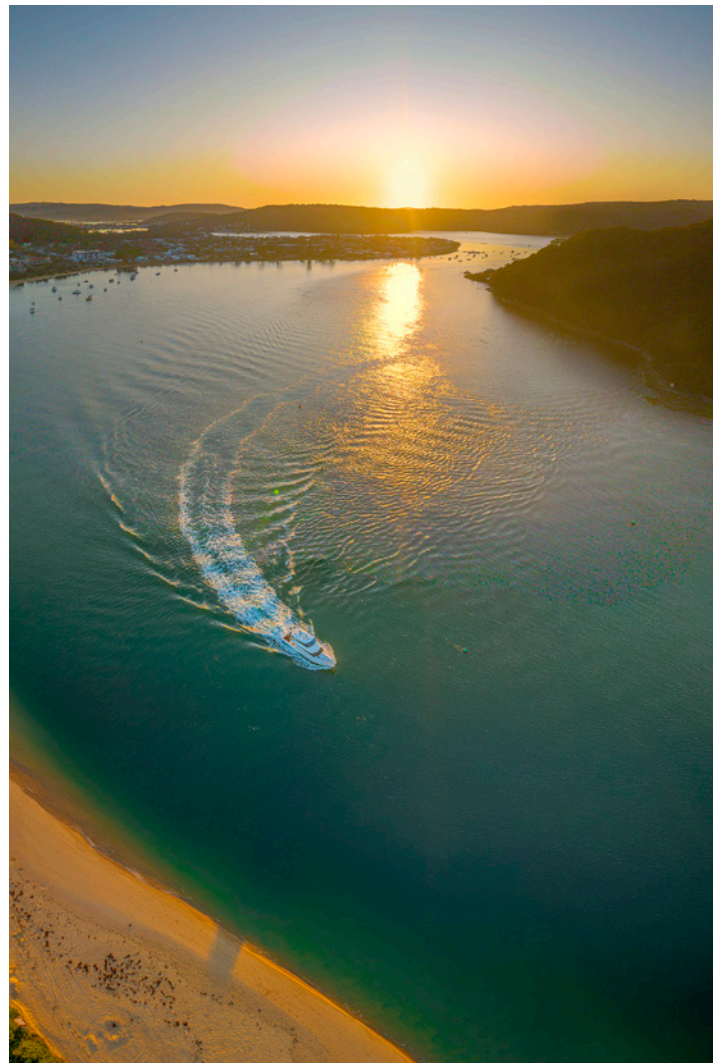


Image of Ettalong Channel
(provided by Jim Picot Photography)



Ettalong Channel Dredging map, indicative only and may be subject to change.

Work Areas

To complete this maintenance dredging there will be some work areas established as follow:

Esplanade: The car park on the beach at the intersection of Kourung Street and the Esplanade will be

temporarily closed during the work to allow for a work area.

Dredging work area on water: As detailed earlier there will be changes to navigation in this area. Please follow direction of navigational aids and marine notices which will be available on our website.

Next Steps

The next steps for the maintenance dredging campaign are:

- Establish work sites.
- Changes to navigational aids.
- Start maintenance dredging work.
- Complete maintenance dredging work.
- Remove work areas.

10 year strategy and approval

We are currently working on obtaining the 10 year environmental approval for dredging of Ettalong Channel.

This is a more thorough and in depth investigation and will look at a number of environmental assessments, options for dredging and sand placement locations.


Community consultation will also be part of this process. We will keep you informed on the progress of this strategy.


Project progress



Contact us

If you have any questions or would like more information on Ettalong Channel Dredging project, please contact our team on:

 Project information line: 1800 571 311

 Dredging@transport.nsw.gov.au

 nswroads.work/ettalongdredging

 Ettalong Channel Dredging
33 James Craig Road
Rozelle NSW 2039

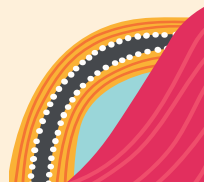
Find out more



Scan the QR code to visit the project webpage.

Acknowledgement of Country

We acknowledge the Traditional Custodians of the land on which we work, the people of the Kuring-gai Nation. We pay our respects to Elders past and present, and their ongoing cultural connection to regions mountains, coastline and waterways.



This document contains important information about Transport projects in your area. If you require the services of an interpreter, please contact the Translating and Interpreting Service on 131 450 and ask them to call Transport Projects on 1800 571 311. The interpreter will then assist you with translation.